

**Goods Movement Study for
US-395 Corridor**

June 21, 2006

Prepared For:
CALTRANS District 9
500 South Main Street
Bishop, CA 93514

Prepared by:



1055 Corporate Center Drive, Suite 300
Monterey Park, California 91754
phone: (323) 260-4703
fax: (323) 260-4705

In Association With:

***The Tioga Group
The Chambers Group***

JA5173

Table of Contents

EXECUTIVE SUMMARY	1
INTRODUCTION	5
TRUCK CLASSIFICATION SURVEY	7
TRUCK DRIVER INTERCEPT SURVEY	9
FLEET OPERATOR SURVEY	18
STUDY AREA FLEETS	19
SPECIFIC OPERATIONAL METRICS	19
<i>Seasonality</i>	20
<i>Equipment and commodities transported</i>	20
ADVERSE WEATHER.....	20
COMMENTS ON US-395	21
TRUCK GROWTH	22

List of Figures

FIGURE 1 – US-395 GOODS MOVEMENT CORRIDOR	2
FIGURE 1A - NORTHBOUND ROUTE CHOICE	2A
FIGURE 1B - SOUTHBOUND ROUTE CHOICE	2B
FIGURE 2 – VEHICLE CLASSIFICATION COUNT LOCATIONS	8
FIGURE 3: TRUCK DRIVER INTERCEPT SURVEY FORM	10

List of Tables

TABLE 1: US-395 NEAR ROUTE 168 COUNT DATA SUMMARY	7
TABLE 2: US-395 NEAR ED POWERS ROAD COUNT DATA SUMMARY	7
TABLE 3: US-6 NEAR SILVER CANYON ROAD COUNT DATA SUMMARY	7

Executive Summary

The California Department of Transportation (Caltrans) District 9 commissioned a goods movement study of the US-395 corridor that was initialized during the summer of 2005. The southern limits of the study area include a portion of US-395 and SR-14 near Ridgecrest. The northern limits of the study area include a portion of US-395 and US-6 up to the Nevada border. Figure 1 shows the study area. The study area extends through Kern County, Inyo County and Mono County. Major cities/towns within the corridor include Ridgecrest, Lone Pine, Independence, Big Pine and Bishop.

The goals of the study were:

- Identify goods movement travel patterns along SR-14, US-395 and US-6
- Identify type of goods and modes of transportation within the corridor
- Develop a better understanding of goods distribution between Southern California and Northern Nevada

The goods movement study included four tasks specifically designed to meet the goals and objectives of the study. They included:

- Conduct truck classification/Axle count survey.
- Conduct truck driver intercept surveys/interviews.
- Conduct local and regional fleet operator surveys/interviews.
- Document and present findings.

Significant findings from the study are summarized below:

Truck Classification Survey

- Medium and heavy duty trucks make up approximately 25% of all vehicles within the corridor
- Passenger vehicles make up the remaining 75% of all vehicles within the corridor
- Average peak period is the midday period between the hours of 10AM and 3PM
- Truck volumes are generally higher in the southbound direction



Figure 1A North Bound Route Choice

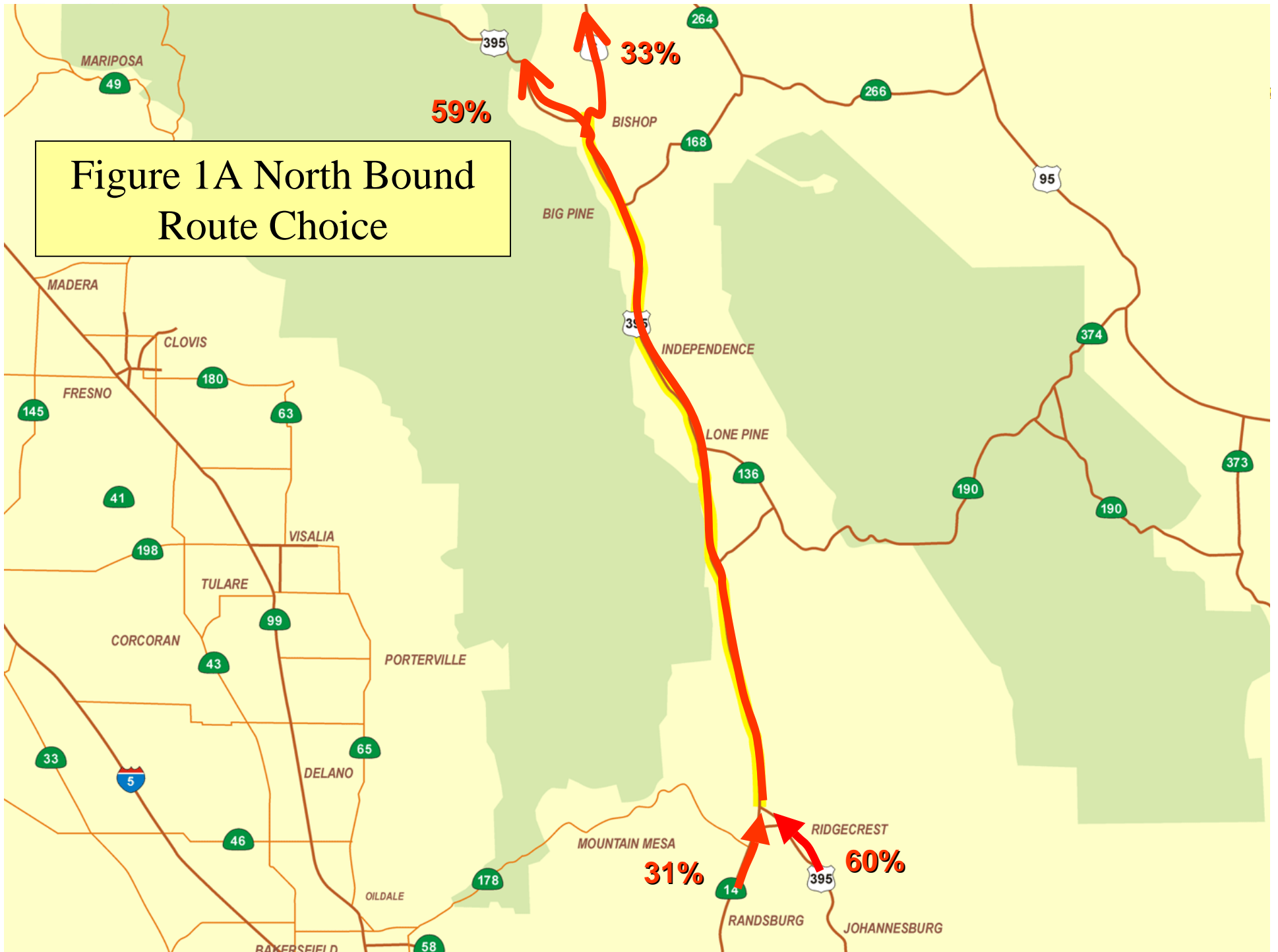
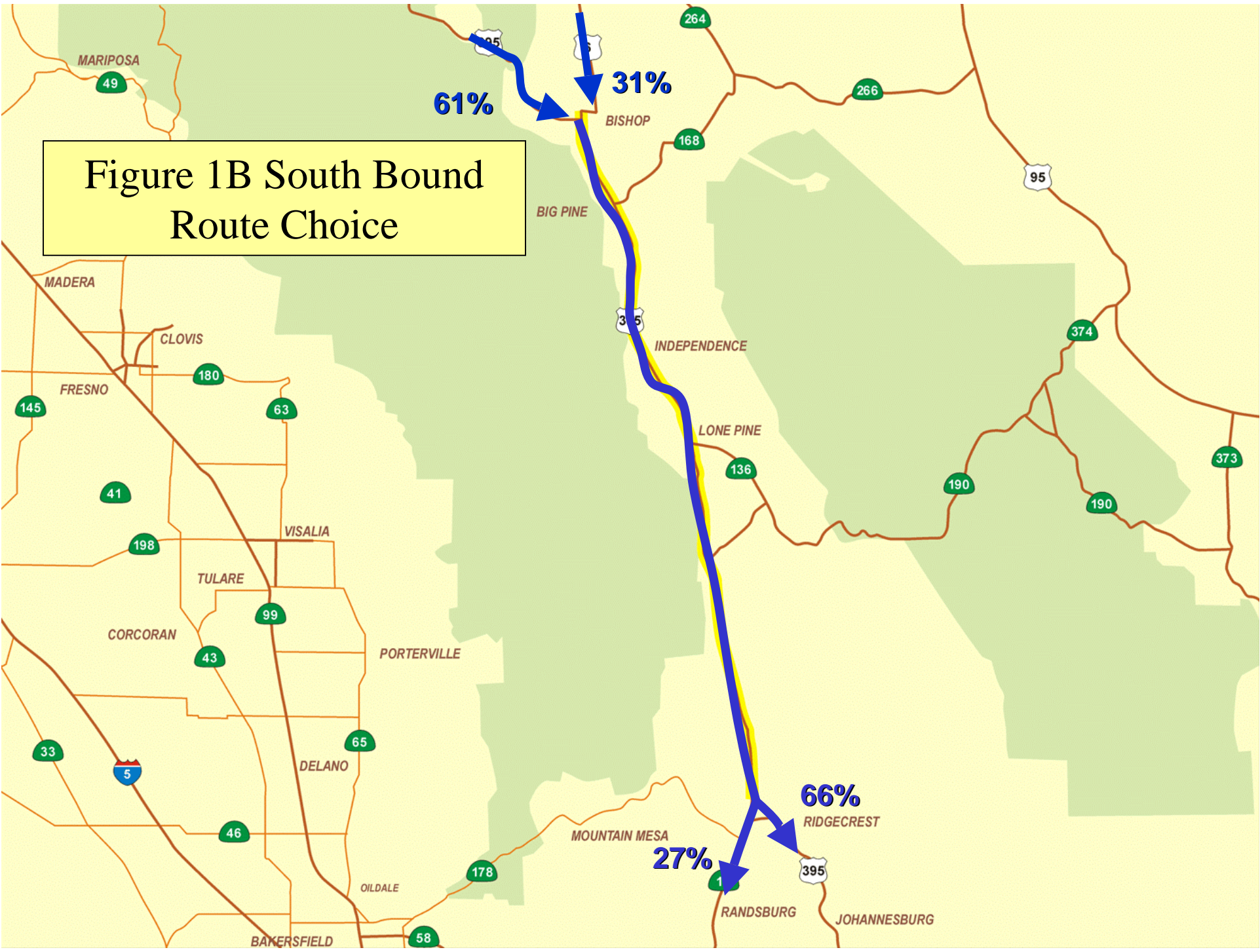


Figure 1B South Bound Route Choice



Truck Driver Intercept Survey

- A total of 1,061 trucks were surveyed passing through Bishop.
- Five-axle single unit trucks make up approximately 80% of all trucks surveyed.
- Of the total trucks surveyed, almost half (48%) are based in California and 14% based in Nevada.
- Majority of trucks based in California are based in Southern California.
- Majority of trucks based in Nevada are based in Reno and Sparks.
- The majority of trucks (93%) traveling the southbound direction are destined for Southern California.
- The majority of southbound trucks surveyed used US-395 (61%) as opposed to US-6 (31%).
- Majority of northbound trucks surveyed are destined for Nevada (60%) and California (21%).
- Majority of northbound trucks surveyed used US-395 (60%) as opposed to SR-14 (31%).
- The most common commodity carried along the US-395 Corridor includes:
 - miscellaneous manufacturing products
 - general freight
 - food/kindred products
 - farm products
 - empty containers.

Local Fleet Operator Surveys

- Local operators rarely travel outside of the study area.
- Local fleets usually include use of smaller trucks including pick-up trucks and vans.
- Most local fleets are concentrated in populated areas (i.e. Bishop, Independence).
- Local operators/businesses are usually served by regional carriers on a weekly/monthly basis - private fleet vehicles are then used for conducting local deliveries.

- Typical local fleet operators include: cement/lumber/building materials, propane/fuel, furniture/appliance, newspaper distribution, hardware/auto parts.
- Approximately 1/3 of local fleet operations are seasonal where winter season affects operations/business (e.g., concrete plant).
- Most local operators are equipped to handle adverse weather - deliveries are usually conducted during adverse weather conditions unless there is a mandatory road closure.

Regional Fleet Operator Surveys

- Regional fleets surveyed included: FedEx Express, FedEx Freight, Conway Western Express, Swift and Schneider National.
- Parcel/less-than-truckload (i.e. FedEx) typically has equipment and drivers based within the study area.
- Truckload carriers (i.e. Swift, Knight) do not have equipment base within study area and typically do not make stops within the study area.
- Regional commercial fleets are equipped to operate in adverse weather - deliveries are usually conducted during adverse weather conditions unless there is a mandatory road closure.
- Most regional trucks use US-395 north of Bishop.

Three presentations of the Goods Movement Study results were presented to local government agencies in the corridor, including the Mono County Local Transportation Commission on April 10, 2006, Inyo County Local Transportation Commission on April 19, 2006 and the Eastern California Transportation Planning Partnership on May 19, 2006.

Introduction

The US-395, SR-14 and US-6 highways spans through Mono, Inyo, and Kern Counties. The highways form a branched, north-south route on the eastern side of the Sierra Nevada.



This network provides the only major truck route up and down the eastern portion of California, connecting eastern Sierra communities with each other, with sources of inbound goods, and with markets for regional production.

Understanding the pattern of actual truck usage on this route is critical for long-term planning and policy choices.

Caltrans District 9 conducted three types of studies to better understand goods/freight movement through the corridor:

- **Truck Classification/Axle Count Study** – Conduct week-long truck classification counts along the study routes. This provides the average number of trucks by type and by weight that utilizes the study corridor on a typical summer week.
- **Truck Driver Surveys Study** – Conduct truck driver surveys to provide insight on intermediate origins and destinations of trucks and goods utilizing the corridor. This also provides an indication of the type of goods and major trucking company operators along the corridor.

- **Goods Origin and Destination Study** – Identify trucking industry contacts and conduct surveys which will yield information on relevant trucking industry routing practices and operating conditions.

This report summarizes the data collected from the three studies described above.

Truck Classification Survey

Vehicle classification counts were conducted from September 19th through September 25 of 2005. Three locations were selected for the count effort. The three locations are:

- US-395 near Route 168
- US-395 near Ed Powers Road
- US-6 near Silver Canyon Road

Figure 2 illustrates the three locations listed above. Traffic count machines were installed to collect vehicle classification data for one full-week. The results of the count surveys are provided in Appendix A. The count data provides hourly vehicle classification results by day and by direction at each of the three count locations. Tables 1, 2 and 3 summarize the results of the count data. The results show the average daily traffic by types and by direction. The 13 types of vehicles are consistent with Caltrans vehicle classification which is described in detail in Appendix B. Based on Caltrans' classification definitions, types 1-4 are classified as passenger vehicles and types 5-13 are categorized as medium and heavy-duty trucks.

Table 1: US-395 Near Route 168 Count Data Summary

DIR/CLASS	#1	#2	#3	#4	#5	#6	#7	#8	#9	#10	#11	#12	#13	Total
NORTHBOUND	1,325	10,666	1,876	40	786	619	55	436	835	576	138	32	216	17,600
SOUTHBOUND	3,460	7,476	1,660	73	1,358	1,680	58	658	677	566	97	23	267	18,053
Total	4,785	18,142	3,536	113	2,144	2,299	113	1,094	1,512	1,142	235	55	483	35,653

Average Passenger Vehicles = 75%
 Average Heavy Duty Truck = 25%

Table 2: US-395 Near Ed Powers Road Count Data Summary

DIR/CLASS	#1	#2	#3	#4	#5	#6	#7	#8	#9	#10	#11	#12	#13	Total
NORTHBOUND	3,181	11,707	2,804	96	1,729	2,428	57	584	463	279	107	15	121	23,571
SOUTHBOUND	1,158	17,275	4,273	126	2,496	412	23	1,140	752	190	133	40	107	28,125
Total	4,339	28,982	7,077	222	4,225	2,840	80	1,724	1,215	469	240	55	228	51,696

Average Passenger Vehicles = 79%
 Average Heavy Duty Truck = 21%

Table 3: US-6 Near Silver Canyon Road Count Data Summary

DIR/CLASS	#1	#2	#3	#4	#5	#6	#7	#8	#9	#10	#11	#12	#13	Total
NORTHBOUND	66	3,474	926	17	807	74	3	196	976	136	32	21	67	6,789
SOUTHBOUND	97	3,620	870	15	680	46	1	188	1,034	24	32	6	14	6,627
Total	163	7,094	1,796	32	1,487	120	4	384	2,010	160	64	27	81	13,416

Average Passenger Vehicles = 68%
 Average Heavy Duty Truck = 32%



Truck Driver Intercept Survey

A truck driver intercept survey was conducted in Bishop along US-395 from September 18th to September 20th, 2005. The continuous survey lasted 48 consecutive hours. The survey included in-person interviews with truck drivers in both the northbound and southbound directions. During the 48-hour duration, a total of 1,061 trucks surveys were conducted.

The focus of the survey was on trucks traveling along US-395 during that particular date and time. The purpose of the survey was to collect user information including:

- Type of trucks
- Where the trucks are based
- Origin of trip
- Destination of trip
- Route used
- Type of goods carried
- Frequency of travel

A survey form was developed specifically for this task. Figure 3 shows the survey form administered. The tabulated results for the 1,061 surveys were provided electronically and submitted as a separate item to Caltrans.

Of the total 1,061 surveys conducted, 507 were in the northbound direction and 554 were in the southbound direction. The results of the survey are summarized below. The questions numbers corresponds with the questions listed in Figure 3.

1. Type of Truck:

Northbound			Southbound			Both Dir		
Truck Type	Response	Pecent	Truck Type	Response	Pecent	Truck Type	Response	Pecent
1	0	0.0%	1	0	0.0%	1	0	0.0%
2	0	0.0%	2	0	0.0%	2	0	0.0%
3	1	0.2%	3	0	0.0%	3	1	0.1%
4	0	0.0%	4	0	0.0%	4	0	0.0%
5	19	3.7%	5	8	1.4%	5	27	2.5%
6	5	1.0%	6	11	2.0%	6	16	1.5%
7	2	0.4%	7	1	0.2%	7	3	0.3%
8	8	1.6%	8	4	0.7%	8	12	1.1%
9	382	75.3%	9	473	85.4%	9	855	80.6%
10	18	3.6%	10	17	3.1%	10	35	3.3%
11	61	12.0%	11	35	6.3%	11	96	9.0%
12	3	0.6%	12	1	0.2%	12	4	0.4%
13	8	1.6%	13	4	0.7%	13	12	1.1%
total	507	100.0%		554	100.0%		1061	100.0%

The truck type numbering designation corresponds with Caltrans' truck classification. Types 1-4 are motorcycles, passenger cars, larger passenger trucks/vans and busses, respectively. Types 5-13 are considered heavy duty trucks. Appendix B summarizes the 13 types of vehicles.

Figure 3: Truck Driver Intercept Survey Form

CALTRANS INTERREGIONAL GOODS MOVEMENT TRUCK ORIGIN/DESTINATION SURVEY	
Date: _____	Direction: NB: _____ SB: _____
Time: _____	Surveyor: _____
1. Type of Truck (surveyor - see classification chart): _____	
2. Where is your truck based? City: _____ State: _____	
3. Where did you begin this trip leg (origin)? City _____ State _____	
4. Which route did you take to get here?	
NB: SR-14 _____ US-395 _____ Other _____	
SB: US-6 _____ US-395 _____ Other _____	
5. Where is your destination? City _____ State _____	
6. Which route are you planning to take to your destination?	
NB: US-6 _____ US-395 _____ Other _____	
SB: SR-14 _____ US-395 _____ Other _____	
7. What are you carrying (see STCC list)? _____	
<i>Surveyor: If hazardous materials, note down placard number</i> _____	
8. Why did you or your dispatcher choose this route?	
<input type="checkbox"/> Truck based on this route	<input type="checkbox"/> Least congestion
<input type="checkbox"/> Trip stop/start on this route	<input type="checkbox"/> Easier grades or road conditions
<input type="checkbox"/> Shortest/fastest route	<input type="checkbox"/> Personal business on this route
<input type="checkbox"/> Better weather	<input type="checkbox"/> Other _____
9. On average, how many times do you use this route?	
Per day: _____ Per Week: _____ Per Month: _____	
10. Any suggestions to improve transportation for truckers in the area?	

As shown, approximately 80% of the trucks surveyed are type 9 which are typically five axle single-unit trucks. The next highest type of trucks surveyed were type 11 (five axle multi-unit) at approximately 9%.

2. *Where is your truck based?* City: _____ State: _____

Northbound			Southbound			Total Both Direction		
State	Response	Percent	State	Response	Percent	State	Response	Percent
Alabama	1	0.2%	Alabama	1	0.2%	Alabama	2	0.2%
Arizona	26	5.1%	Arizona	17	3.1%	Arizona	43	4.1%
CA	318	62.7%	Arkansas	1	0.2%	Arkansas	1	0.1%
Georgia	2	0.4%	CA	195	35.2%	CA	513	48.4%
Idaho	15	3.0%	Colorado	1	0.2%	Colorado	1	0.1%
Illinois	3	0.6%	Florida	3	0.5%	Florida	3	0.3%
Indiana	3	0.6%	Georgia	2	0.4%	Georgia	4	0.4%
Iowa	1	0.2%	Idaho	55	9.9%	Idaho	70	6.6%
Mass	1	0.2%	Indiana	7	1.3%	Illinois	3	0.3%
Minn	3	0.6%	Iowa	2	0.4%	Indiana	10	0.9%
Missouri	2	0.4%	Kansas	3	0.5%	Iowa	3	0.3%
Montana	5	1.0%	Kentucky	1	0.2%	Kansas	3	0.3%
Nebraska	3	0.6%	Minn	2	0.4%	Kentucky	1	0.1%
Nevada	47	9.3%	Missouri	2	0.4%	Mass	1	0.1%
New York	1	0.2%	Montana	2	0.4%	Minn	5	0.5%
Ohio	3	0.6%	Nebraska	9	1.6%	Missouri	4	0.4%
Oklahoma	2	0.4%	Nevada	105	19.0%	Montana	7	0.7%
Oregon	10	2.0%	New York	3	0.5%	N. Carolina	2	0.2%
Tenn	2	0.4%	N. Carolina	2	0.4%	N. Dakota	1	0.1%
Texas	5	1.0%	N. Dakota	1	0.2%	Nebraska	12	1.1%
Utah	1	0.2%	Ohio	4	0.7%	Nevada	152	14.3%
Washingto	17	3.4%	Oklahoma	4	0.7%	New York	4	0.4%
Wisconsin	1	0.2%	Oregon	36	6.5%	Ohio	7	0.7%
Wyoming	1	0.2%	Penn	4	0.7%	Oklahoma	6	0.6%
DNA	34	6.7%	Tenn	6	1.1%	Oregon	46	4.3%
Total	507	100.0%	Texas	8	1.4%	Penn	4	0.4%
			Utah	10	1.8%	Tenn	8	0.8%
			Washingto	37	6.7%	Texas	13	1.2%
			Wisconsin	1	0.2%	Utah	11	1.0%
			Canada	4	0.7%	Washingto	54	5.1%
			DNA	26	4.7%	Wisconsin	2	0.2%
			Total	554	100.0%	Wyoming	1	0.1%
						Canada	4	0.4%
						DNA	60	5.7%
						Total	1061	100.0%

DNA: Did Not Answer

Results of Question 2 indicate that almost half of the trucks surveyed are based in California (48%) and approximately 14% are based in Nevada.

2. Where is your truck based? City: _____ State: _____

Within California

Northbound			Southbound			Total Both Direction		
City	Response	Percent	City	Response	Percent	City	Response	Percent
Fontana Count	44	13.8%	Bishop Count	42	21.5%	Bishop Count	63	12.3%
Los Angeles Count	24	7.5%	Fontana Count	13	6.7%	Fontana Count	57	11.1%
Bishop Count	21	6.6%	Los Angeles Count	13	6.7%	Los Angeles Count	37	7.2%
Ontario Count	15	4.7%	Bakersfield Count	6	3.1%	Ontario Count	19	3.7%
Pomona Count	10	3.1%	Pomona Count	5	2.6%	Pomona Count	15	2.9%
Bakersfield Count	7	2.2%	City of Industry Count	4	2.1%	Bakersfield Count	13	2.5%
Riverside Count	7	2.2%	Ontario Count	4	2.1%	Commerce Count	9	1.8%
Whittier Count	7	2.2%	Red Bluff Count	4	2.1%	Long Beach Count	9	1.8%
Adelanto Count	6	1.9%	Atlanto Count	3	1.5%	Riverside Count	9	1.8%
Commerce Count	6	1.9%	Carlsbad Count	3	1.5%	Rancho Cucamonga Count	8	1.6%
Hesperia Count	6	1.9%	Chino Count	3	1.5%	City of Industry Count	7	1.4%
Long Beach Count	6	1.9%	Commerce Count	3	1.5%	Gardena Count	7	1.4%
Rancho Cucamonga Co	6	1.9%	Kerman Count	3	1.5%	Hesperia Count	7	1.4%
Rialto Count	6	1.9%	Long Beach Count	3	1.5%	Lancaster Count	7	1.4%
Gardena Count	5	1.6%	Delano Count	2	1.0%	Rialto Count	7	1.4%
La Mirada Count	5	1.6%	El Monte Count	2	1.0%	South Gate Count	7	1.4%
Lancaster Count	5	1.6%	Forest Hill Count	2	1.0%	Whittier Count	7	1.4%
South Gate Count	5	1.6%	Gardena Count	2	1.0%	Adelanto Count	6	1.2%
Compton Count	4	1.3%	Huntington Beach Count	2	1.0%	La Mirada Count	6	1.2%
Lucerne Valley Count	4	1.3%	Lancaster Count	2	1.0%	Lucerne Valley Count	6	1.2%
Mojave Count	4	1.3%	Lone Pine Count	2	1.0%	Chino Count	5	1.0%
85 other cities < 1%			Lucerne Valley Count	2	1.0%	Compton Count	5	1.0%
			Manteca Count	2	1.0%	Red Bluff Count	5	1.0%
			Rancho Cucamonga Count	2	1.0%	83 other cities < 1%		
			Reno Count	2	1.0%			
			Riverside Count	2	1.0%			
			Sacramento Count	2	1.0%			
			San Diego Count	2	1.0%			
			Santa Fe Springs Count	2	1.0%			
			South Gate Count	2	1.0%			
			Tulare Count	2	1.0%			
			Valencia Count	2	1.0%			
			Wilmington Count	2	1.0%			
			48 other cities < 1%					

Within Nevada

Northbound			Southbound			Total Both Direction		
City	Response	Percent	City	Response	Percent	City	Response	Percent
Carson City Count	3	6.4%	Caldwell Count	1	1.0%	Caldwell Count	1	0.7%
Fallon Count	2	4.3%	Carson City Count	3	2.9%	Carson City Count	6	3.9%
Fernly Count	1	2.1%	Fallon Count	2	1.9%	Fallon Count	4	2.6%
Hawthorne Count	1	2.1%	Fernly Count	4	3.8%	Fernly Count	5	3.3%
Las Vegas Count	4	8.5%	Hawthorne Count	1	1.0%	Hawthorne Count	2	1.3%
Reno Count	18	38.3%	Las Parks Count	1	1.0%	Las Parks Count	1	0.7%
Silver Springs Count	1	2.1%	Las Vegas Count	4	3.8%	Las Vegas Count	8	5.3%
Sparks Count	13	27.7%	Lovelock Count	2	1.9%	Lovelock Count	2	1.3%
Tonopah Count	1	2.1%	Reno Count	51	48.6%	Reno Count	69	45.4%
Welbby Count	1	2.1%	Silver Springs Count	2	1.9%	Silver Springs Count	3	2.0%
DNA	2	4.3%	Sparks Count	28	26.7%	Sparks Count	41	27.0%
Grand Count	47	100.0%	Stead Count	1	1.0%	Stead Count	1	0.7%
			Wellington Count	2	1.9%	Tonopah Count	1	0.7%
			Winnemucca Count	2	1.9%	Welbby Count	3	2.0%
			DNA	1	1.0%	Winnemucca Count	2	1.3%
			Grand Count	105	100.0%	DNA	3	2.0%
						Grand Count	152	100.0%

Of the 48% of truck based in California, approximately 12% were based in Bishop. However, the majority of trucks surveyed were based in Southern California. Of the 14.3% of trucks based in Nevada, the majority are based in Reno (45%) and Sparks (27%).

3. Where did you begin this trip leg (origin)? City _____ State _____

Northbound			Southbound		
State	Response	Percent	State	Response	Percent
Alabama Count	1	0.2%	California Count	115	20.8%
Arizona Count	3	0.6%	Canada Count	1	0.2%
California Count	443	87.4%	Georgia Count	1	0.2%
Georgia Count	2	0.4%	Idaho Count	39	7.0%
Idaho Count	2	0.4%	Indiana Count	7	1.3%
Nevada Count	6	1.2%	Montana Count	1	0.2%
Ohio Count	1	0.2%	Nevada Count	301	54.3%
Tennessee Count	1	0.2%	North Carolina Count	1	0.2%
Texas Count	2	0.4%	Oregon Count	24	4.3%
DNA	46	9.1%	Pennsylvania Count	1	0.2%
Total	507	100.0%	South Carolina Count	1	0.2%
			Tennessee Count	1	0.2%
			Utah Count	2	0.4%
			Washington Count	28	5.1%
			DNA	31	5.6%
			Total	554	100.0%

Northbound			Southbound		
Cities Within California	Response	Percent	Cities Within California	Response	Percent
Fontana Count	65	21.8%	Bishop Count	64	55.7%
Los Angeles Count	42	14.1%	Mammoth Count	6	5.2%
Ontario Count	28	9.4%	Bakersfield Count	4	3.5%
Riverside Count	12	4.0%	Fontana Count	3	2.6%
Adelanto Count	11	3.7%	Lone Pine Count	3	2.6%
Bishop Count	10	3.4%	Antelope Valley Count	2	1.7%
Long Beach Count	10	3.4%	Atlanto Count	2	1.7%
Pomona Count	10	3.4%	Reno Count	2	1.7%
Bakersfield Count	9	3.0%	Sacramento Count	2	1.7%
Hesperia Count	9	3.0%	Waker Count	2	1.7%
Rancho Cucamonga Count	9	3.0%	25 cities < 1%		
Rialto Count	9	3.0%			
Lone Pine Count	8	2.7%	Cities Within Nevada	Response	Percent
Mojave Count	7	2.3%	Reno Count	155	51.7%
Victorville Count	7	2.3%	Sparks Count	59	19.7%
Whittier Count	7	2.3%	Fernly Count	19	6.3%
Commerce Count	6	2.0%	Hawthorne Count	13	4.3%
Lancaster Count	6	2.0%	Carson City Count	6	2.0%
San Bernardino Count	6	2.0%	Winnemucca Count	6	2.0%
San Diego Count	6	2.0%	Fallon Count	4	1.3%
South Gate Count	6	2.0%	Patrick Count	4	1.3%
Chino Count	5	1.7%	29 cities < 1%		
City of Industry Count	5	1.7%			
Compton Count	5	1.7%			
95 cities < 1%					

The results of Question 3 indicate that most northbound trip origins are within California (87%) while most southbound trip origins are in Nevada (54%) followed by California (20%). Of the 87% northbound trips originating in California, the majority are from Southern California (i.e. Fontana, Los Angeles, Ontario and Riverside). Of the 54% of southbound trips originating from Nevada, the majority of trips are from Reno and Sparks, 52% and 20%, respectively.

4. Which route did you take to get here?

NB:	SR-14	<u>159 (31%)</u>	US-395	<u>303 (60%)</u>	Other	<u>45 (9%)</u>
SB:	US-6	<u>171 (31%)</u>	US-395	<u>338 (61%)</u>	Other	<u>45 (9%)</u>

The results show that truck drivers in both directions prefer to use US-395 (approximately 60%) as opposed to US-6 and SR-14 (31%). The use of US-395 in Kern County likely reflects the heavy concentration of warehousing/distribution centers in San Bernardino and Riverside Counties.

5. Where is your destination? City _____ State _____

Northbound			Southbound		
State	Response	Percent	State	Response	Percent
California Count	104	20.5%	Arizona Count	3	0.5%
Colorado Count	1	0.2%	California Count	513	92.6%
Idaho Count	21	4.1%	Texas Count	4	0.7%
Indiana Count	1	0.2%	DNA	34	6.1%
Nevada Count	303	59.8%	Total	554	100.0%
New York Count	1	0.2%			
Oregon Count	13	2.6%			
Washington Count	20	3.9%			
Wyoming Count	1	0.2%			
DNA	42	8.3%			
Total	507	100.0%			

Results from Question 5 show that the majority of trucks in the northbound direction are destined for Nevada (60%) and California (20%). In the southbound direction, the overwhelmingly majority of trucks are destined for California (93%).

Of the 60% northbound trips destined for Nevada, the majority are destined for Reno (62%) and Sparks (20%). Of the 20% northbound trips destined within California, the majority of trips are destined for Bishop (63%) and Mammoth Lakes (20%). Of the 92% southbound trips destined for California, the majority are destined for cities located in Southern California (i.e. Fontana, Los Angeles, Ontario and Riverside).

6. Which route are you planning to take to your destination?

NB:	US-6	<u>167 (33%)</u>	US-395	<u>299 (59%)</u>	Other	<u>41 (8%)</u>
SB:	SR-14	<u>150 (27%)</u>	US-395	<u>366 (66%)</u>	Other	<u>38 (8%)</u>

The results show that truck drivers in both directions prefer to use US-395 (approximately 59%-66%) as opposed to US-6 (33%) and SR-14 (27%). The use of US-395 in Kern County likely reflects the heavy concentration of warehousing/distribution centers in San Bernardino and Riverside Counties.

Question 5 (Continued)

Northbound			Southbound		
Cities Within California	Response	Percent	Cities Within California	Response	Percent
Bishop Count	65	62.5%	Los Angeles Count	101	19.7%
Mammoth Count	21	20.2%	Fontana Count	44	8.6%
Bridgeport Count	3	2.9%	Riverside Count	19	3.7%
Lawes Count	3	2.9%	Ontario Count	18	3.5%
Boise Count	1	1.0%	City of Industry Count	16	3.1%
Carson City Count	1	1.0%	San Diego Count	16	3.1%
Chino Count	1	1.0%	Bakersfield Count	15	2.9%
Hammel Count	1	1.0%	Bishop Count	11	2.1%
Hermiston Count	1	1.0%	Lone Pine Count	11	2.1%
Lone Lake Count	1	1.0%	Long Beach Count	11	2.1%
Reno Count	1	1.0%	Mira Loma Count	10	1.9%
Susanville Count	1	1.0%	Santa Fe Springs Count	10	1.9%
Truckee Count	1	1.0%	Vernon Count	10	1.9%
Weed Count	1	1.0%	Anaheim Count	8	1.6%
Yacomo Park Count	1	1.0%	DNA	8	1.6%
Yosemite Count	1	1.0%	Mohave Count	6	1.2%
Total	104	100.0%	San Bernardino Count	6	1.2%
			Carson Count	5	1.0%
Cities Within Nevada	Response	Percent	Commerce Count	5	1.0%
Reno Count	188	62.0%	Orange Count	5	1.0%
Sparks Count	52	17.2%	Rialto Count	5	1.0%
Carson City Count	15	5.0%	103 cities <1%		
Fernly Count	8	2.6%			
Fallon Count	6	2.0%			
Empire Count	4	1.3%			
DNA	4	1.3%			
Dayton Count	3	1.0%			
Laws Count	3	1.0%			
Silver Springs Count	2	0.7%			
Tonopah Count	2	0.7%			
Austin Count	1	0.3%			
Battle Mountain Count	1	0.3%			
Carlen Count	1	0.3%			
Diamond Valley Count	1	0.3%			
Ely Count	1	0.3%			
Eureka Count	1	0.3%			
Fish Lake Count	1	0.3%			
Galconda Count	1	0.3%			
Gallcon Count	1	0.3%			
Gallconda Count	1	0.3%			
Geritone Count	1	0.3%			
Hawthorne Count	1	0.3%			
McCarren Count	1	0.3%			
Roundmount Count	1	0.3%			
Shurz Count	1	0.3%			
Wellington Count	1	0.3%			
Total	303	100.0%			

7. What are you carrying (see STCC list)? _____

Northbound				Southbound			
STCC Code	Description	Response	Percent	STCC Code	Description	Response	Percent
39 Count	Misc Manufacturing	75	14.8%	20 Count	Food and Kindred Products	87	15.7%
44 Count	Freight Forwarder	61	12.0%	39 Count	Misc Manufacturing	77	13.9%
20 Count	Food and Kindred Products	58	11.4%	E Count	Empty	75	13.5%
DNA	Did Not Answer	42	8.3%	7 Count	Farm Product	53	9.6%
E Count	Empty	41	8.1%	44 Count	Freight Forwarder	48	8.7%
32 Count	Stone, Clay, Glass and Concrete	32	6.3%	DNA	Did Not Answer	38	6.9%
46 Count	Misc Mixed Shipments	25	4.9%	24 Count	Lumber and Wood	28	5.1%
24 Count	Lumber and Wood	20	3.9%	28 Count	Chemicals	24	4.3%
29 Count	Petroleum and Coal Products	18	3.6%	26 Count	Pulp and Paper	18	3.2%
37 Count	Transportation Equipment	17	3.4%	32 Count	Stone, Clay, Glass and Concrete	18	3.2%
28 Count	Chemicals	15	3.0%	28 Count	Chemicals	17	3.1%
43 Count	Mail, Express and other Contract	15	3.0%	43 Count	Mail, Express and other Contract	15	2.7%
26 Count	Pulp and Paper	14	2.8%	27 Count	Printed Matter	13	2.3%
22 Count	Textile Mill Products	11	2.2%	29 Count	Petroleum and Coal Products	12	2.2%
7 Count	Farm Product	10	2.0%	33 Count	Primary Metal Products	7	1.3%
25 Count	Furniture and Fixtures	9	1.8%	37 Count	Transportation Equipment	7	1.3%
34 Count	Fabricated Metal Products	9	1.8%	35 Count	Machinery, excluding Electrical	4	0.7%
36 Count	Electrical Machinery	9	1.8%	22 Count	Textile Mill Products	3	0.5%
33 Count	Primary Metal Products	8	1.6%	25 Count	Furniture and Fixtures	3	0.5%
35 Count	Machinery, excluding Electrical	6	1.2%	14 Count	Nonmetallic Minerals, excluding Fuels	2	0.4%
14 Count	Nonmetallic Minerals, excluding Fuels	4	0.8%	34 Count	Fabricated Metal Products	2	0.4%
10 Count	Metallic Ore	3	0.6%	10 Count	Metallic Ore	1	0.2%
9 Count	Fresh Fish/Marine Products	1	0.2%	23 Count	Apparel	1	0.2%
23 Count	Apparel	1	0.2%	36 Count	Electrical Machinery	1	0.2%
27 Count	Printed Matter	1	0.2%	Total		554	100.0%
30 Count	Rubber	1	0.2%				
38 Count	Instruments	1	0.2%				
Total		507	100.0%				

The intent of Question 7 was to identify the types of good being transported along the subject corridor. The Standard Transportation Commodity Classification (STCC) codes were used to categorize the type of goods surveyed. The STCC codes are provided in Appendix C. Based on the results of the survey, the most common types of good include: miscellaneous manufacturing, general freight, food/kindred products farm products, and empties.

8. Why did you or your dispatcher choose this route?

Northbound

• Truck based on this route - 2%	• Least congestion – 1%
• Trip stop/start on this route – 11%	• Easier grades/road conditions – 3%
• Shortest/fastest route – 73%	• Personal business – 1%
• Better weather – 1%	• Other – 0%

Southbound

• Truck based on this route – 2%	• Least congestion – 3%
• Trip stop/start on this route – 4%	• Easier grades/road conditions – 3%
• Shortest/fastest route – 72%	• Personal business – 1%
• Better weather – 1%	• Other -1%

The results from survey question 8 indicate that the majority of trucks (72%-73%) use the US-395 corridor because it is the fastest/shortest route.

9. On average, how many times do you use this route?

(Per Day-4%, Per Week-62%, Per Month-34%)

Northbound Average

Per day: 1.8 Per Week: 2.8 Per Month: 2.0

Southbound Average

Per day: 1.5 Per Week: 2.4 Per Month: 2.6

The survey results indicate that most trucks use the US-395 corridor on a weekly (62%) and monthly (34%) basis with only a slight 4% on daily basis. Of the 62% of trucks who uses US-395 on a weekly basis, they average about 2-3 trips per week. Of the 34% of trucks who uses the US-395 on a monthly basis, they average 2-3 times per month.

10. Any suggestions to improve transportation for truckers in the area?

Frequent comments:

- Raise speed limit to match autos - 30%
- More rest-stops - 6%
- More lanes/passing lanes - 22%
- Bishop bypass - 2%
- Better roadway maintenance/fix potholes - 4%

In general, truck drivers had very few complaints regarding US-395. Of those who provided comments, 30% would prefer the speed limit be raised to match that of autos, 22% would like to have more lanes/passing lanes constructed.

Fleet Operator Survey

For the survey of study area trucking operations, two lists of truck fleet operators were developed. The first list included study area firms mostly engaged in private trucking (trucking the firms' own goods). The second list, which is the subject of this report, included regional and national commercial truckers (trucking goods owned by others) that serve or transit the study area.

Twenty firms were on the list; 18 participated. Ten have responded with 13 full responses (multiple responses from fleets with multiple domiciles serving the area). Of the 8 remaining, all are pending callbacks, which may occur after the date of this report. Those that responded include fleets that are generally believed to be operating the most trips in the area: FedEx Express, FedEx Freight (formerly Viking Freight), Conway Western Express, Sierra West Express, Swift Transportation (3 locations), Schneider National (2 locations), Knight Transportation, Fundis Trucking, Apex Bulk Carriers, and S.S. Hert Trucking.

Like the survey of local, private carriers, results from commercial carriers paint a consistent picture in line with industry norms. Local delivery fleets operate trips up and down US-395 using smaller trucks. They perform local pickup and delivery of parcels and less than truckload (LTL) quantities that require consolidation and distribution at a local terminal to transfer the shipments between line-haul and local vehicles. All the surveyed parcel and LTL carriers perform the assembly and distribution function in Bishop. Each serves points north on US-395 and US-6 or south on US-395 based on each day's demand, but always returns to Bishop. Each has a complementary operation serving the far northern end of US-395 based in Reno/Sparks, and a second complementary operation serving the far southern end of US-395 and SR-14 based somewhere in the Victorville/Mohave/Lancaster area. Line-haul fleets operate up and down US-395 providing one of four services.

- Feeding the local delivery parcel and LTL fleets mentioned immediately above.
- Serving local customers with regional trips to/from Southern California or Northern Nevada. These are truckload carriers responding to local demand for full load (TL) service. The trip may return to its origin or continue through to Reno/Sparks or Southern California depending on the carrier's daily dispatch situation. The bottled water movement at Olancho is an example of this although none of the carriers interviewed indicated that they participate in that movement.
- Transiting through the area with regional trips between Southern California and Northern Nevada. Both the parcel/LTL carriers and the TL carriers do this.

- Transiting through the area with interregional trips between Southern California and points in far Northern California, far Northern Nevada, Eastern Oregon and Washington, and Western and Northern Idaho. This is done by both the parcel/LTL carriers and the TL carriers

These fleets are equipped to operate in adverse weather. They stop dispatching trips only when they know in advance that a road is closed.

Study Area Fleets

Only the parcel/LTL carriers (e.g., FedEx Express, FedEx Freight) have equipment and drivers based in the study area. Those that have drivers/equipment based in the study area have small terminals in Bishop/Laws. The daily dispatch pattern tends to be out-and-back delivery trips with the route varying from day to day. All operate five days per week.

All of those with a small fleet in Bishop also have equipment and drivers in either Reno/Sparks or the Victorville/Mojave/Lancaster area; operate into and out of the study area but not all the way through to Bishop. Generally, fleets from the north come only as far south as Bridgeport, and fleets from the south only as far north as Ridgecrest. The daily dispatch pattern tends to be out-and-back delivery trips with the route varying from day to day. All operate five days per week.

Truckload carriers do not have any equipment based in the study area. Instead they are based in Southern California, Central California, Reno/Sparks/Fallon, or Oregon, Washington and Idaho. All such carriers will, on occasion, have drivers/equipment from elsewhere in the U.S. make occasional trips in the area.

Specific Operational Metrics

All respondents use US-395. Some have only intermittent trips (less than one per week); most have 5-15 trips per week each direction. The carrier reporting the most trips has 160 per week, but that estimate is deemed to be incomplete because that carrier is highly decentralized. To get a complete count for that company it would be necessary to contact 20–25 terminals/divisions. Three kinds that are in geographical proximity to US-395 were contacted, but all three are in one division. It is estimated the total number of trips operated by the entire company is in excess of 200 per week. It is unknown if any other carrier that comes close to 200 per week. Of the carriers surveyed, the next highest was 50 trips per week.

LTL/parcel carriers have 5 per week in each direction (each weekday) that serves the local area thorough terminals at Bishop/Laws. All but one of the LTL/parcel carriers also operates additional trips transiting the study area. Truckload carriers operate seven days per week with fewer trips on Sunday and Monday mornings than at other times. All are commercial carriers (carrying goods owned by others for compensation is their primary business).

South of Ridgecrest, all use US-395. All but one also uses SR-14, but use of US-395 is much greater than use of SR-14. North of Bishop, only one uses US-6, while 360 use US-395 as their primary route. All others know of that route (US-6) and sometimes (but not as a standard procedure) use it in adverse weather conditions when US-395 is closed, but none use it routinely. All mentioned that it is too circuitous.

All mention that the number of trips is dependent on which carrier currently is favored by specific shippers. That is, over a five-year period, all carriers had gained or lost some business. On the net, over five years, there appears to be an increase in trips. Carriers that use the route intermittently are truckload carriers and emphasize that usage is dependent on their underlying customers shipping (production and sales) patterns and/or special projects.

Seasonality

Because they are commercial carriers, virtually all report that October through December is the peak period and January and February the off-peak. A few truckload carriers mention that rather than seasonality, the controlling “peak” comes from major regional construction projects in process (or alternatively, no projects under construction at all).

Equipment and commodities transported

Most carriers operated dry van equipment, either semis or doubles. A small fraction operates flatbeds, liquid tanks, and/or dry bulk tanks. Because the dry van carriers are commercial carriers, they describe the goods handled in very generic terms such as dry freight; freight of all kinds, retail goods, distribution freight, and so on. Bulk carriers are much more specific but the name of the commodity transported would tend to reveal the name of the underlying shipper involved (which was not asked).

Adverse Weather

Windstorms and icy roads are the topical items for operations in adverse weather. All carriers dispatch trips into inclement weather and leave it to driver discretion to stop if conditions become too severe. If it is known that the road is closed, however, all carriers (save one) stop dispatching until the road is expected to open. A few may detour via US-6/395, and all report that they will not detour via I-80 over Donner Pass, as it is far too circuitous and just as subject to weather interruptions. If the trip is interregional, e.g., Hermiston or Spokane to Los Angeles, they may detour via I-5, as that is not as circuitous.

Comments on US-395

The comments on US-395 driving conditions were fairly consistent and favorable across all responses.

- The most common response was “nothing special to report because the drivers are not complaining about it.”
- Some respondents commented that drivers like US-395, and that it is a good, well-maintained route.
- Several respondents cited the need for a truck bypass around Bishop, and several others thought there was a need for more lanes.
- Many commercial truckers mentioned the icy conditions particularly north of Lee Vining.
- The good communications that Caltrans sponsors announcing road conditions.
- The addition of wider lanes and shoulders in recent years.

Truck Growth

Several sources were used to estimate the potential growth in truck volumes within the US-395 corridor. They include:

- California Department of Finance Projections
- US Census Projections
- Southern California Population Projections
- Northern Nevada Population Projections
- Southern California Association of Governments (SCAG) - Travel Demand Forecasts

As population increases, demand for goods to sustain this growth also increases, which directly translates to increase in truck traffic. Therefore, population growth is a key indicator/factor in estimating potential truck growth. Based on the California Department of Finance Projections, Inyo County is expected to have minimal growth. Mono County is expected to average 0.8% annual growth and Kern County at 1.7% annual growth. The table below summarizes these projections by county through year 2050.

	Inyo	Mono	Inyo + Mono	Kern	Inyo+ Mono + Kern
2000	18,257	12,939	31,196	664,694	695,890
2010	18,396	14,705	33,101	808,808	841,909
2020	18,404	16,248	34,652	950,112	984,764
2030	18,256	17,471	35,727	1,114,878	1,150,605
2040	17,899	18,178	36,077	1,325,648	1,361,725
2050	17,699	18,862	36,561	1,549,594	1,586,155
CAGR	-0.1%	0.8%	0.3%	1.7%	1.7%

Based on US Census, California and Nevada population is expected to grow at a rate of 1.1% and 1.3% annually, respectively. The table below summarizes these projections. As can be seen, California and Nevada expected growth rates are comparable to the national average of 0.9%. The three counties of Inyo, Mono and Kern (total average annual growth of 1.7%) are projected to be slightly higher as compared to the national average.

Census 2000 State	2000 Census Population	2030 Projections Population	CAGR
United States	281,421,906	363,584,435	0.9%
California	33,871,648	46,444,861	1.1%
Nevada	1,998,257	2,940,084	1.3%

U.S. Census Bureau, Population Division, Interim State Population Projections, 2005.

Internet Release Date: April 21, 2005

Further breakdown of population forecasts were conducted for Southern California counties as well as Northern Nevada counties. The table below summarizes population projections within each of the respective counties.

Southern California Counties							
	2000	2010	2020	2030	2040	2050	CAGR
LOS ANGELES	9,559,635	10,461,007	10,885,092	11,236,734	11,380,841	11,423,198	0.4%
ORANGE	2,854,026	3,260,162	3,526,144	3,665,343	3,704,802	3,702,641	0.5%
RIVERSIDE	1,553,902	2,165,148	2,675,648	3,180,411	3,717,961	4,305,161	2.1%
SAN BERNARDINO	1,719,615	2,133,377	2,456,089	2,762,307	3,029,750	3,289,254	1.3%
Total	15,687,178	18,019,694	19,542,973	20,844,795	21,833,354	22,720,254	0.7%

Northern Nevada Population Projections				
County	2003	2010	2020	CAGR
Carson City	55,220	58,840	64,119	0.9%
Douglas	45,603	50,383	58,635	1.5%
Esmerelda	1,116	890	874	-1.4%
Mineral	4,687	3,597	2,695	-3.2%
Washoe	373,233	415,402	466,546	1.3%
Total	481,862	531,122	594,889	1.2%

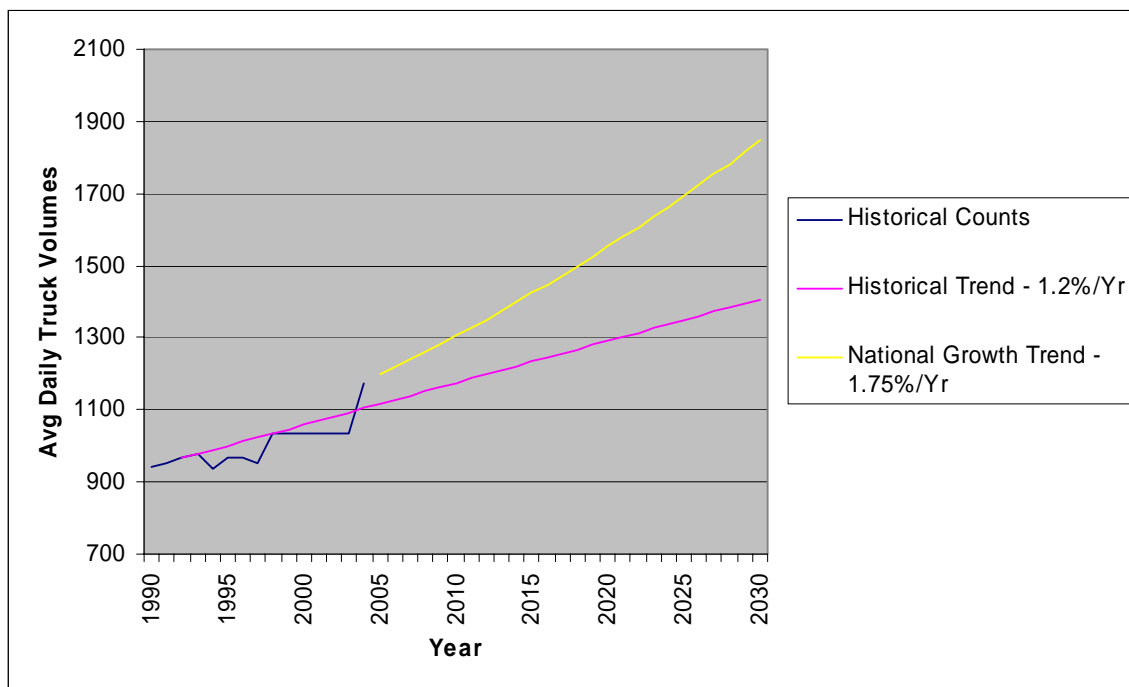
Based on the forecasts shown above, the Southern California region which includes the counties of Los Angeles, Orange, Riverside and San Bernardino is expected to grow at an average of 0.7% annually. The Northern Nevada region is expected to grow at an average of 1.2% annually. Growth rate within both these regions are comparable to the national trend of 0.9% annually.

Research into national goods movement trend also reveals the following:

- Nationally, truckload business tonnage is expected to grow at 2.9% through 2010 and at 2.5% from 2011 to 2016.
- Less-than-truckload business is forecasted to grow at 3.3% through 2010 and at 2.8% from 2011 to 2016.
- Private trucking is expected to grow at 2.5% through 2010 and at 2.2% from 2011 to 2016, due partly to outsourcing to for-hire carriers.
- Growth in the number of study area truck trips is expected to follow the national trends, about 1.8% annually.

Additional research also reveals that US-395 corridor historically averages about 1.2% per year in truck growth which is also consistent with SCAG's 2030 travel demand forecast of US-395 and SR-14 within northern Los Angeles County of 1.2%.

Based on research from multiple available sources discussed previously, it can be concluded that truck growth along the US-395 corridor can be expected to range between the historical and SCAG projected trend of 1.2% per year to the national average of 1.8% per year. The graph below provides a straight-line interpolation of these trends to year 2030. Based on this projection, in 2030, daily truck volumes along US-395 is expected to range between 1,400 truck trips per day to almost 1,900 truck trips per day.



APPENDIX A
Vehicle Classification Count Data

APPENDIX B
Caltrans Vehicle Classification

Daily Classification Report

Prepared by: Southland Car Counters

Project #: 05-8016-001N

Date: 9/19/2005

Location: US 395 Post Mile 96.4 btwn Division Creek Rest Area and Rte 168

NORTHBOUND

Time	#1	#2	#3	#4	#5	#6	#7	#8	#9	#10	#11	#12	#13	Total
00:00 AM	1	15	2	0	4	1	0	1	5	1	3	1	2	36
01:00	1	7	3	0	0	1	0	2	1	0	0	0	1	16
02:00	0	4	2	0	0	0	0	0	4	0	0	0	0	10
03:00	1	3	0	0	2	0	0	1	7	1	0	0	0	15
04:00	0	10	1	0	2	0	0	0	3	0	0	0	0	16
05:00	2	12	4	0	0	3	0	1	6	1	1	0	0	30
06:00	1	30	7	0	3	3	0	1	4	3	0	0	0	52
07:00	7	27	9	1	4	5	0	2	4	1	0	0	0	60
08:00	9	39	20	1	3	9	0	3	4	5	1	0	0	94
09:00	10	81	23	1	15	10	1	8	5	2	0	0	0	156
10:00	13	81	17	1	4	8	0	7	3	2	0	0	0	136
11:00	13	97	23	0	13	9	0	8	4	2	0	0	3	172
12:00 PM	14	93	26	0	14	15	0	13	7	4	1	0	1	188
13:00	16	108	21	1	14	16	1	10	9	7	0	0	3	206
14:00	22	129	27	1	17	23	0	12	5	2	0	1	0	239
15:00	21	123	22	0	11	18	0	11	12	5	0	1	0	224
16:00	24	118	16	0	17	12	0	4	11	7	0	0	0	209
17:00	15	90	25	2	13	12	0	2	7	10	0	0	0	176
18:00	15	52	18	0	8	4	1	6	14	6	0	0	0	124
19:00	11	52	7	1	4	5	0	0	12	3	0	2	0	97
20:00	11	28	7	0	4	1	0	2	7	3	0	0	1	64
21:00	4	24	6	0	1	2	0	3	10	1	0	0	2	53
22:00	2	17	8	0	1	3	0	1	8	5	0	1	1	47
23:00	3	11	5	0	3	3	0	2	11	2	0	0	0	40
Totals	216	1251	299	9	157	163	3	100	163	73	6	6	14	2460
% of Totals	9%	51%	12%	0%	6%	7%	0%	4%	7%	3%	0%	0%	1%	100%
% AM	2%	17%	5%	0%	2%	2%	0%	1%	2%	1%	0%	0%	0%	32%
AM Peak Hour	10:00	11:00	09:00	07:00	09:00	09:00	09:00	09:00	03:00	08:00			11:00	11:00
Volume	13	97	23	1	15	10	1	8	7	5	3	1	3	172
% PM	6%	34%	8%	0%	4%	5%	0%	3%	5%	2%	0%	0%	0%	68%
PM Peak Hour	16:00	14:00	14:00	17:00	14:00	14:00	13:00	12:00	18:00	17:00	12:00	19:00	13:00	14:00
Volume	24	129	27	2	17	23	1	13	14	10	1	2	3	239

Summary	<u>Total</u>			
Trucks & Busses:	Class (#4 thru #13):	694	% Trucks & Busses: 28%	% of Trucks & Busses AM: 27%
				% of Trucks & Busses PM: 29%

#1 Motorcycles - 2 Axles
 #2 Passenger Cars - 2 Axles
 #3 Pickup Trucks, Vans, - 2 Axl
 #4 Busses

#5 Single Unit - 2 Axles, 6 Tires
 #6 Single Unit Truck - 3 Axles
 #7 Single Unit - 4 Axles
 #8 Double Unit - <5 Axles

#9 Double Unit - 5 Axles
 #10 Double Unit - >5 Axles
 #11 Multi-Unit 6 Axles
 #12 Multi-Unit <6 Axles

#13 Multi-Unit >6 Axles

Daily Classification Report

Prepared by: Southland Car Counters

Project #: 05-8016-001N

Date: 9/20/2005

Location: US 395 Post Mile 96.4 btwn Division Creek Rest Area and Rte 168

NORTHBOUND

Time	#1	#2	#3	#4	#5	#6	#7	#8	#9	#10	#11	#12	#13	Total
00:00 AM	1	10	1	1	1	2	0	1	7	3	1	0	0	28
01:00	2	6	4	0	0	0	0	0	6	1	2	1	1	23
02:00	2	5	1	2	1	1	0	0	5	1	4	2	1	25
03:00	0	5	1	0	0	0	0	0	4	3	10	1	1	25
04:00	0	5	1	0	0	0	0	1	9	5	6	2	0	29
05:00	2	6	7	1	2	2	0	0	6	0	1	1	0	28
06:00	3	21	4	0	0	5	0	1	10	1	2	0	1	48
07:00	7	29	9	1	6	5	0	4	6	4	0	0	2	73
08:00	13	52	12	0	6	11	0	4	3	5	0	1	1	108
09:00	8	58	14	1	8	19	0	7	13	2	0	0	2	132
10:00	11	81	19	2	10	13	0	10	9	2	0	0	2	159
11:00	22	64	17	0	7	14	0	4	5	4	0	0	0	137
12:00 PM	27	77	6	1	13	16	0	4	9	2	2	0	1	158
13:00	35	72	21	0	9	14	1	7	7	4	0	0	1	171
14:00	27	83	16	1	8	17	2	7	9	2	0	0	1	173
15:00	18	83	10	0	11	16	0	10	3	6	1	1	2	161
16:00	16	77	23	2	17	17	0	1	8	8	0	0	3	172
17:00	29	92	12	0	8	15	1	2	8	7	1	0	1	176
18:00	11	58	8	1	8	9	1	3	9	7	0	1	3	119
19:00	7	45	7	0	2	5	0	5	12	12	1	0	3	99
20:00	6	23	7	0	4	2	1	2	8	3	1	0	1	58
21:00	5	19	3	0	3	1	0	0	13	5	0	0	0	49
22:00	5	20	5	1	2	2	0	0	11	2	1	0	0	49
23:00	2	10	2	0	1	1	0	2	4	1	0	0	0	23
Totals	259	1001	210	14	127	187	6	75	184	90	33	10	27	2223
% of Totals	12%	45%	9%	1%	6%	8%	0%	3%	8%	4%	1%	0%	1%	100%
% AM	3%	15%	4%	0%	2%	3%		1%	4%	1%	1%	0%	0%	37%
AM Peak Hour	11:00	10:00	10:00	02:00	10:00	09:00		10:00	09:00	04:00	03:00	02:00	07:00	10:00
Volume	22	81	19	2	10	19		10	13	5	10	2	2	159
% PM	8%	30%	5%	0%	4%	5%	0%	2%	5%	3%	0%	0%	1%	63%
PM Peak Hour	13:00	17:00	16:00	16:00	16:00	14:00	14:00	15:00	21:00	19:00	12:00	15:00	16:00	17:00
Volume	35	92	23	2	17	17	2	10	13	12	2	1	3	176

Summary	<u>Total</u>				
Trucks & Busses:	Class (#4 thru #13):	753	% Trucks & Busses: 34%	% of Trucks & Busses AM: 38%	% of Trucks & Busses PM: 31%

#1 Motorcycles - 2 Axles
 #2 Passenger Cars - 2 Axles
 #3 Pickup Trucks, Vans, - 2 Axl
 #4 Busses

#5 Single Unit - 2 Axles, 6 Tires
 #6 Single Unit Truck - 3 Axles
 #7 Single Unit - 4 Axles
 #8 Double Unit - <5 Axles

#9 Double Unit - 5 Axles
 #10 Double Unit - >5 Axles
 #11 Multi-Unit 6 Axles
 #12 Multi-Unit <6 Axles

#13 Multi-Unit >6 Axles

Daily Classification Report

Prepared by: Southland Car Counters

Project #: 05-8016-001N

Date: 9/21/2005

Location: US 395 Post Mile 96.4 btwn Division Creek Rest Area and Rte 168

NORTHBOUND

Time	#1	#2	#3	#4	#5	#6	#7	#8	#9	#10	#11	#12	#13	Total
00:00 AM	3	6	2	0	4	2	0	1	4	5	1	0	1	29
01:00	3	4	2	0	1	2	0	0	4	0	6	1	1	24
02:00	0	4	0	1	0	2	0	2	4	2	10	0	1	26
03:00	3	4	0	0	2	0	0	0	2	1	7	1	1	21
04:00	2	7	1	1	1	2	0	3	6	4	6	0	1	34
05:00	6	5	0	0	0	2	0	0	1	2	0	1	0	17
06:00	9	16	3	0	0	5	0	0	0	1	2	0	1	37
07:00	17	26	3	0	4	8	1	0	2	3	0	0	2	66
08:00	25	30	6	1	9	13	1	1	0	6	0	0	1	93
09:00														0
10:00														0
11:00														0
12:00 PM														0
13:00														0
14:00														0
15:00														0
16:00														0
17:00														0
18:00														0
19:00	6	79	12	0	7	2	1	2	2	8	0	0	1	120
20:00	5	80	15	0	5	1	0	3	6	7	0	0	2	124
21:00	6	70	11	0	6	0	0	1	7	6	0	0	3	110
22:00	3	49	8	0	2	0	1	4	8	8	0	0	6	89
23:00	4	50	10	0	1	1	0	2	10	7	0	0	1	86
Totals	92	430	73	3	42	40	4	19	56	60	32	3	22	876
% of Totals	11%	49%	8%	0%	5%	5%	0%	2%	6%	7%	4%	0%	3%	100%
% AM	8%	12%	2%	0%	2%	4%	0%	1%	3%	3%	4%	0%	1%	40%
AM Peak Hour	08:00	08:00	08:00	02:00	08:00	08:00	07:00	04:00	04:00	08:00	02:00	01:00	07:00	08:00
Volume	25	30	6	1	9	13	1	3	6	6	10	1	2	93
% PM	3%	37%	6%		2%	0%	0%	1%	4%	4%			1%	60%
PM Peak Hour	19:00	20:00	20:00		19:00	19:00	19:00	22:00	23:00	19:00			22:00	20:00
Volume	6	80	15		7	2	1	4	10	8			6	124

Summary	<u>Total</u>				
Trucks & Busses:	Class (#4 thru #13):	281	% Trucks & Busses: 32%	% of Trucks & Busses AM: 46%	% of Trucks & Busses PM: 23%

#1 Motorcycles - 2 Axles
 #2 Passenger Cars - 2 Axles
 #3 Pickup Trucks, Vans, - 2 Axl
 #4 Busses

#5 Single Unit - 2 Axles, 6 Tires
 #6 Single Unit Truck - 3 Axles
 #7 Single Unit - 4 Axles
 #8 Double Unit - <5 Axles

#9 Double Unit - 5 Axles
 #10 Double Unit - >5 Axles
 #11 Multi-Unit 6 Axles
 #12 Multi-Unit <6 Axles

#13 Multi-Unit >6 Axles

Daily Classification Report

Prepared by: Southland Car Counters

Project #: 05-8016-001N

Date: 9/22/2005

Location: US 395 Post Mile 96.4 btwn Division Creek Rest Area and Rte 168

NORTHBOUND

Time	#1	#2	#3	#4	#5	#6	#7	#8	#9	#10	#11	#12	#13	Total
00:00 AM	0	37	0	0	0	0	0	1	3	2	1	0	0	44
01:00	0	30	1	0	1	0	0	2	1	0	1	0	0	36
02:00	0	11	1	0	1	1	1	0	0	1	1	0	0	17
03:00	0	15	0	0	0	0	0	1	4	1	0	0	0	21
04:00	0	18	6	0	6	0	0	2	6	0	2	0	0	40
05:00	0	30	5	0	3	0	0	1	2	1	1	1	0	44
06:00	1	33	11	0	2	0	0	0	2	0	1	0	0	50
07:00	14	47	8	0	7	4	1	1	8	3	1	0	3	97
08:00	27	85	22	0	5	1	1	4	10	6	0	0	3	164
09:00	25	93	31	0	9	6	0	7	11	2	1	0	1	186
10:00	40	137	33	0	15	5	1	10	9	4	0	0	5	259
11:00	41	150	23	0	10	4	1	7	3	0	0	0	4	243
12:00 PM	20	169	24	0	14	6	0	5	4	11	0	0	7	260
13:00	25	159	23	0	11	1	2	5	11	5	1	0	4	247
14:00	23	161	31	0	14	7	1	4	7	9	0	0	1	258
15:00	14	168	38	2	10	2	1	4	5	7	0	0	3	254
16:00	21	176	20	0	13	4	0	7	13	5	0	0		259
17:00	25	138	24	0	10	3	1	4	6	12	0	0	2	225
18:00	15	112	25	0	5	3	0	3	5	9	0	0	5	182
19:00	7	72	11	0	0	0	0	3	16	12	0	1	5	127
20:00	3	81	15	0	2	1	0	3	5	7	1	0	4	122
21:00	8	68	11	0	5	0	0	3	3	4	0	0	1	103
22:00	5	49	14	0	6	1	1	4	6	9	0	0	2	97
23:00	3	49	11	0	1	1	0	0	10	8	0	0	0	83
Totals	317	2088	388	2	150	50	11	81	150	118	11	2	50	3418
% of Totals	9%	61%	11%	0%	4%	1%	0%	2%	4%	3%	0%	0%	1%	100%
% AM	4%	20%	4%		2%	1%	0%	1%	2%	1%	0%	0%	0%	35%
AM Peak Hour	11:00	11:00	10:00		10:00	09:00	02:00	10:00	09:00	08:00	04:00	05:00	10:00	10:00
Volume	41	150	33		15	6	1	10	11	6	2	1	5	259
% PM	5%	41%	7%	0%	3%	1%	0%	1%	3%	3%	0%	0%	1%	65%
PM Peak Hour	13:00	16:00	15:00	15:00	12:00	14:00	13:00	16:00	19:00	17:00	13:00	19:00	12:00	12:00
Volume	25	176	38	2	14	7	2	7	16	12	1	1	7	260

Summary	<u>Total</u>				
Trucks & Busses:	Class (#4 thru #13):	625	% Trucks & Busses: 18%	% of Trucks & Busses AM: 19%	% of Trucks & Busses PM: 18%

#1 Motorcycles - 2 Axles
 #2 Passenger Cars - 2 Axles
 #3 Pickup Trucks, Vans, - 2 Axl
 #4 Busses

#5 Single Unit - 2 Axles, 6 Tires
 #6 Single Unit Truck - 3 Axles
 #7 Single Unit - 4 Axles
 #8 Double Unit - <5 Axles

#9 Double Unit - 5 Axles
 #10 Double Unit - >5 Axles
 #11 Multi-Unit 6 Axles
 #12 Multi-Unit <6 Axles

#13 Multi-Unit >6 Axles

Daily Classification Report

Prepared by: Southland Car Counters

Project #: 05-8016-001N

Date: 9/23/2005

Location: US 395 Post Mile 96.4 btwn Division Creek Rest Area and Rte 168

NORTHBOUND

Time	#1	#2	#3	#4	#5	#6	#7	#8	#9	#10	#11	#12	#13	Total
00:00 AM	3	49	4	0	1	0	0	1	8	2	0	0	0	68
01:00	0	21	7	0	0	1	0	2	7	2	5	0	3	48
02:00	1	10	3	0	1	1	0	0	4	1	8	2	1	32
03:00	2	11	5	0	2	0	0	1	1	3	5	0	7	37
04:00	1	14	1	0	2	0	0	3	3	0	5	1	2	32
05:00	1	12	5	0	2	0	0	0	7	3	0	0	0	30
06:00	1	33	10	0	1	1	1	2	9	4	0	0	3	65
07:00	3	57	14	0	7	0	0	4	4	2	1	0	3	95
08:00	8	88	21	0	10	3	2	5	9	4	0	0	1	151
09:00	11	140	29	0	11	1	0	6	8	5	0	0	5	216
10:00	18	180	27	0	7	5	3	3	4	10	0	0	2	259
11:00	41	168	32	1	15	6	2	7	7	3	1	0	3	286
12:00 PM	37	183	30	3	11	2	1	4	5	12	0	0	5	293
13:00	21	181	26	0	9	5	0	3	11	2	2	1	2	263
14:00	12	184	31	0	14	10	0	4	9	7	1	0	5	277
15:00	14	200	30	0	15	7	2	7	8	5	1	0	2	291
16:00	20	204	28	0	12	11	3	9	5	2	0	0	5	299
17:00	10	197	28	0	7	7	2	4	2	7	1	0	2	267
18:00	3	129	23	0	5	8	2	3	3	6	0	0	3	185
19:00	16	109	18	0	2	5	0	3	5	9	0	0	0	167
20:00	5	130	20	0	7	3	1	4	7	2	0	0	1	180
21:00	5	102	27	0	4	1	0	4	5	3	0	0	0	151
22:00	6	89	12	1	6	2	0	1	7	2	0	0	1	127
23:00	3	99	10	1	4	0	0	2	7	3	0	1	1	131
Totals	242	2590	441	6	155	79	19	82	145	99	30	5	57	3950
% of Totals	6%	66%	11%	0%	4%	2%	0%	2%	4%	3%	1%	0%	1%	100%
% AM	2%	20%	4%	0%	1%	0%	0%	1%	2%	1%	1%	0%	1%	33%
AM Peak Hour	11:00	10:00	11:00	11:00	11:00	11:00	10:00	11:00	06:00	10:00	02:00	02:00	03:00	11:00
Volume	41	180	32	1	15	6	3	7	9	10	8	2	7	286
% PM	4%	46%	7%	0%	2%	2%	0%	1%	2%	2%	0%	0%	1%	67%
PM Peak Hour	12:00	16:00	14:00	12:00	15:00	16:00	16:00	16:00	13:00	12:00	13:00	13:00	12:00	16:00
Volume	37	204	31	3	15	11	3	9	11	12	2	1	5	299

Summary	<u>Total</u>				
Trucks & Busses:	Class (#4 thru #13):	677	% Trucks & Busses: 17%	% of Trucks & Busses AM: 22%	% of Trucks & Busses PM: 15%

#1 Motorcycles - 2 Axles
 #2 Passenger Cars - 2 Axles
 #3 Pickup Trucks, Vans, - 2 Axl
 #4 Busses

#5 Single Unit - 2 Axles, 6 Tires
 #6 Single Unit Truck - 3 Axles
 #7 Single Unit - 4 Axles
 #8 Double Unit - <5 Axles

#9 Double Unit - 5 Axles
 #10 Double Unit - >5 Axles
 #11 Multi-Unit 6 Axles
 #12 Multi-Unit <6 Axles

#13 Multi-Unit >6 Axles

Daily Classification Report

Prepared by: Southland Car Counters

Project #: 05-8016-001N

Date: 9/24/2005

Location: US 395 Post Mile 96.4 btwn Division Creek Rest Area and Rte 168

NORTHBOUND

Time	#1	#2	#3	#4	#5	#6	#7	#8	#9	#10	#11	#12	#13	Total
00:00 AM	2	62	15	0	3	1	0	0	4	3	0	0	0	90
01:00	5	31	7	0	3	0	0	0	3	0	2	0	0	51
02:00	4	22	4	1	1	0	0	0	1	1	0	0	0	34
03:00	0	21	4	2	0	0	0	0	4	3	4	2	2	42
04:00	1	12	1	0	1	0	0	0	1	0	2	1	0	19
05:00	0	17	4	0	0	0	0	0	4	0	0	0	1	26
06:00	0	39	2	0	2	0	0	0	3	4	1	0	1	52
07:00	6	57	10	0	5	2	0	2	1	4	0	0	1	88
08:00	3	91	12	0	2	2	0	5	4	4	1	0	1	125
09:00	11	122	15	0	5	6	0	2	7	6	0	0	1	175
10:00	5	134	20	0	5	6	0	4	6	6	1	0	6	193
11:00	13	126	14	0	8	4	2	2	1	7	0	0	2	179
12:00 PM	11	134	12	2	9	3	1	8	0	3	0	0	0	183
13:00	11	128	18	0	3	3	0	6	1	8	0	0	2	180
14:00	8	127	20	0	4	3	1	1	3	1	0	0	3	171
15:00	5	114	15	0	6	2	0	3	5	4	1	0	4	159
16:00	6	97	13	0	3	2	0	1	7	3	0	0	0	132
17:00	4	84	12	0	3	4	1	2	1	4	0	0	0	115
18:00	0	77	16	0	3	2	0	1	2	1	0	0	2	104
19:00	0	43	7	0	5	0	0	1	3	3	0	0	0	62
20:00	1	39	3	0	5	1	0	0	2	0	1	0	0	52
21:00	0	28	8	0	0	1	0	0	2	1	0	0	0	40
22:00	0	18	5	0	1	1	0	0	2	1	0	0	0	28
23:00	1	15	4	0	1	0	0	1	0	0	1	0	0	23
Totals	97	1638	241	5	78	43	5	39	67	67	14	3	26	2323
% of Totals	4%	71%	10%	0%	3%	2%	0%	2%	3%	3%	1%	0%	1%	100%
% AM	2%	32%	5%	0%	2%	1%	0%	1%	2%	2%	0%	0%	1%	46%
AM Peak Hour	11:00	10:00	10:00	03:00	11:00	09:00	11:00	08:00	09:00	11:00	03:00	03:00	10:00	10:00
Volume	13	134	20	2	8	6	2	5	7	7	4	2	6	193
% PM	2%	39%	6%	0%	2%	1%	0%	1%	1%	1%	0%	0%	0%	54%
PM Peak Hour	12:00	12:00	14:00	12:00	12:00	17:00	12:00	12:00	16:00	13:00	15:00	15:00	15:00	12:00
Volume	11	134	20	2	9	4	1	8	7	8	1	4	4	183

Summary	<u>Total</u>				
Trucks & Busses:	Class (#4 thru #13):	347	% Trucks & Busses: 15%	% of Trucks & Busses AM: 17%	% of Trucks & Busses PM: 13%

#1 Motorcycles - 2 Axles
 #2 Passenger Cars - 2 Axles
 #3 Pickup Trucks, Vans, - 2 Axl
 #4 Busses

#5 Single Unit - 2 Axles, 6 Tires
 #6 Single Unit Truck - 3 Axles
 #7 Single Unit - 4 Axles
 #8 Double Unit - <5 Axles

#9 Double Unit - 5 Axles
 #10 Double Unit - >5 Axles
 #11 Multi-Unit 6 Axles
 #12 Multi-Unit <6 Axles

#13 Multi-Unit >6 Axles

Daily Classification Report

Prepared by: Southland Car Counters

Project #: 05-8016-001N

Date: 9/25/2005

Location: US 395 Post Mile 96.4 btwn Division Creek Rest Area and Rte 168

NORTHBOUND

Time	#1	#2	#3	#4	#5	#6	#7	#8	#9	#10	#11	#12	#13	Total
00:00 AM	1	8	1	0	0	0	0	1	3	0	0	1	0	15
01:00	1	9	0	0	1	1	0	0	0	1	0	0	0	13
02:00	0	5	0	0	1	0	0	0	0	0	0	0	0	6
03:00	0	5	1	0	0	0	0	0	2	2	0	0	0	10
04:00	0	6	0	0	0	0	0	0	1	0	0	0	0	7
05:00	1	6	0	0	1	0	0	0	0	0	0	0	0	8
06:00	0	11	2	0	1	0	0	0	1	1	0	0	1	17
07:00	1	24	2	0	2	0	0	0	1	1	0	0	0	31
08:00	5	52	2	0	3	2	0	2	2	3	0	0	1	72
09:00	7	83	8	0	5	2	0	2	1	1	0	0	0	109
10:00	14	128	16	0	9	1	0	4	2	5	1	0	2	182
11:00	2	138	20	1	5	4	1	1	1	8	0	1	3	185
12:00 PM	6	165	20	0	3	4	2	6	1	3	0	0	1	211
13:00	5	155	16	0	5	3	1	5	2	6	0	0	1	199
14:00	10	158	22	0	4	4	1	3	4	4	0	0	1	211
15:00	22	138	13	0	4	15	1	3	6	4	0	0	1	207
16:00	6	119	21	0	6	11	0	2	4	4	0	0	0	173
17:00	6	113	12	0	5	4	0	0	6	4	0	0	2	152
18:00	6	87	17	0	4	4	0	3	5	3	0	0	1	130
19:00	0	74	14	0	2	0	1	2	9	8	0	0	1	111
20:00	4	69	18	0	7	0	0	3	4	4	0	0	1	110
21:00	2	49	9	0	4	0	0	2	5	4	0	0	0	75
22:00	2	44	5	0	3	2	0	1	6	2	6	0	2	73
23:00	1	22	5	0	2	0	0	0	4	1	5	1	2	43
Totals	102	1668	224	1	77	57	7	40	70	69	12	3	20	2350
% of Totals	4%	71%	10%	0%	3%	2%	0%	2%	3%	3%	1%	0%	1%	100%
% AM	1%	20%	2%	0%	1%	0%	0%	0%	1%	1%	0%	0%	0%	28%
AM Peak Hour	10:00	11:00	11:00	11:00	10:00	11:00	11:00	10:00		11:00	10:00		11:00	11:00
Volume	14	138	20	1	9	4	1	4	3	8	1	1	3	185
% PM	3%	51%	7%		2%	2%	0%	1%	2%	2%	0%	0%	1%	72%
PM Peak Hour	15:00	12:00	14:00		20:00	15:00	12:00	12:00	19:00	19:00	22:00	23:00	17:00	12:00
Volume	22	165	22		7	15	2	6	9	8	6	1	2	211

Summary	<u>Total</u>				
Trucks & Busses:	Class (#4 thru #13):	356	% Trucks & Busses: 15%	% of Trucks & Busses AM: 15%	% of Trucks & Busses PM: 15%

#1 Motorcycles - 2 Axles
 #2 Passenger Cars - 2 Axles
 #3 Pickup Trucks, Vans, - 2 Axl
 #4 Busses

#5 Single Unit - 2 Axles, 6 Tires
 #6 Single Unit Truck - 3 Axles
 #7 Single Unit - 4 Axles
 #8 Double Unit - <5 Axles

#9 Double Unit - 5 Axles
 #10 Double Unit - >5 Axles
 #11 Multi-Unit 6 Axles
 #12 Multi-Unit <6 Axles

#13 Multi-Unit >6 Axles

Daily Classification Report

Prepared by: Southland Car Counters

Project #: 05-8016-001S

Date: 9/19/2005

Location: US 395 Post Mile 96.4 btwn Division Creek Rest Area and Rte 168

SOUTHBOUND

Time	#1	#2	#3	#4	#5	#6	#7	#8	#9	#10	#11	#12	#13	Total
00:00 AM	4	6	0	0	4	0	0	2	2	0	0	0	0	18
01:00	1	7	0	2	2	3	0	1	4	0	1	0	0	21
02:00	3	7	0	1	0	1	0	0	6	1	0	0	0	19
03:00	0	6	0	0	2	0	0	2	3	2	0	0	0	15
04:00	0	5	1	0	4	0	0	0	1	0	0	0	0	11
05:00	1	18	11	0	18	6	0	1	4	0	0	0	0	59
06:00	7	31	9	0	9	3	0	2	3	2	0	0	0	66
07:00	17	62	10	0	5	15	0	2	4	5	0	0	0	120
08:00	34	86	26	1	19	26	0	4	5	2	0	0	0	203
09:00	18	95	17	0	16	20	1	12	5	2	0	0	2	188
10:00	35	112	31	3	29	25	0	19	3	3	0	0	3	263
11:00	39	121	23	1	31	24	0	10	4	1	0	0	3	257
12:00 PM	30	147	30	1	20	22	2	8	3	4	0	0	1	268
13:00	32	122	29	2	21	21	1	23	5	2	1	0	1	260
14:00	24	123	19	0	20	25	1	9	1	7	0	1	0	230
15:00	26	104	26	2	19	21	1	10	6	5	0	0	5	225
16:00	36	83	14	0	11	16	2	7	6	7	0	0	2	184
17:00	33	72	4	2	11	12	0	2	1	4	0	0	2	143
18:00	25	39	8	0	8	12	0	4	4	10	0	0	2	112
19:00	17	26	6	0	5	3	2	5	11	7	0	0	1	83
20:00	10	25	3	0	8	2	0	3	9	7	0	0	0	67
21:00	10	21	0	0	4	2	0	1	9	6	0	1	4	58
22:00	7	9	0	0	3	1	0	4	8	2	1	0	3	38
23:00	1	6	4	0	0	3	0	0	1	4	0	0	1	20
Totals	410	1333	271	15	269	263	10	131	108	83	3	2	30	2928
% of Totals	14%	46%	9%	1%	9%	9%	0%	4%	4%	3%	0%	0%	1%	100%
% AM	5%	19%	4%	0%	5%	4%	0%	2%	2%	1%	0%	0%	0%	42%
AM Peak Hour	11:00	11:00	10:00	10:00	11:00	08:00	09:00	10:00	02:00	07:00	01:00		10:00	10:00
Volume	39	121	31	3	31	26	1	19	6	5	1		3	263
% PM	9%	27%	5%	0%	4%	5%	0%	3%	2%	2%	0%	0%	1%	58%
PM Peak Hour	16:00	12:00	12:00	13:00	13:00	14:00	12:00	13:00	19:00	18:00	13:00	14:00	15:00	12:00
Volume	36	147	30	2	21	25	2	23	11	10	1	1	5	268

Summary	<u>Total</u>		
Trucks & Busses:	Class (#4 thru #13):	914	% Trucks & Busses: 31%
			% of Trucks & Busses AM: 32%
			% of Trucks & Busses PM: 31%

#1 Motorcycles - 2 Axles
 #2 Passenger Cars - 2 Axles
 #3 Pickup Trucks, Vans, - 2 Axl
 #4 Busses

#5 Single Unit - 2 Axles, 6 Tires
 #6 Single Unit Truck - 3 Axles
 #7 Single Unit - 4 Axles
 #8 Double Unit - <5 Axles

#9 Double Unit - 5 Axles
 #10 Double Unit - >5 Axles
 #11 Multi-Unit 6 Axles
 #12 Multi-Unit <6 Axles

#13 Multi-Unit >6 Axles

Daily Classification Report

Prepared by: Southland Car Counters

Project #: 05-8016-001S

Date: 9/20/2005

Location: US 395 Post Mile 96.4 btwn Division Creek Rest Area and Rte 168

SOUTHBOUND

Time	#1	#2	#3	#4	#5	#6	#7	#8	#9	#10	#11	#12	#13	Total
00:00 AM	3	2	0	0	1	4	0	1	3	2	1	0	2	19
01:00	4	5	3	1	1	0	0	0	4	6	7	0	1	32
02:00	2	3	1	2	0	0	0	0	2	0	6	2	3	21
03:00	5	0	0	0	1	0	1	2	3	6	3	0	0	21
04:00	3	4	3	0	3	3	0	0	2	1	3	0	0	22
05:00	8	14	10	0	8	6	1	1	3	0	0	1	2	54
06:00	7	23	5	0	8	2	0	0	7	2	0	0	1	55
07:00	11	51	7	2	12	11	0	1	5	4	0	1	1	106
08:00	27	81	13	1	13	12	1	5	4	2	0	0	3	162
09:00	20	97	17	0	13	12	1	3	12	3	1	0	2	181
10:00	18	89	21	0	16	18	0	10	5	4	0	0	2	183
11:00	26	76	24	1	20	18	0	6	4	0	0	0	2	177
12:00 PM	18	96	15	2	20	11	0	7	5	5	0	0	1	180
13:00	16	81	14	1	15	11	0	12	4	3	0	0	1	158
14:00	20	99	15	1	18	14	0	4	9	4	0	0	3	187
15:00	12	72	14	0	20	15	0	6	1	3	0	0	4	147
16:00	17	63	13	0	11	11	0	3	3	5	0	0	4	130
17:00	30	42	5	0	6	10	1	5	5	5	0	0	4	113
18:00	20	37	12	0	6	12	0	2	6	3	0	0	2	100
19:00	16	34	6	0	11	7	1	2	11	8	1	0	3	100
20:00	17	25	3	0	4	2	0	3	6	8	0	0	3	71
21:00	12	19	4	0	3	7	0	2	15	2	1	1	0	66
22:00	3	10	1	0	5	1	0	3	5	2	1	1	2	34
23:00	2	7	0	0	5	1	0	0	1	3	1	0	1	21
Totals	317	1030	206	11	220	188	6	78	125	81	25	6	47	2340
% of Totals	14%	44%	9%	0%	9%	8%	0%	3%	5%	3%	1%	0%	2%	100%
% AM	6%	19%	4%	0%	4%	4%	0%	1%	2%	1%	1%	0%	1%	44%
AM Peak Hour	08:00	09:00	11:00	02:00	11:00	10:00	03:00	10:00	09:00	01:00	01:00	02:00	02:00	10:00
Volume	27	97	24	2	20	18	1	10	12	6	7	2	3	183
% PM	8%	25%	4%	0%	5%	4%	0%	2%	3%	2%	0%	0%	1%	56%
PM Peak Hour	17:00	14:00	12:00	12:00	12:00	15:00	17:00	13:00	21:00	19:00	19:00	21:00	15:00	14:00
Volume	30	99	15	2	20	15	1	12	15	8	1	1	4	187

Summary	<u>Total</u>				
Trucks & Busses:	Class (#4 thru #13):	787	% Trucks & Busses: 34%	% of Trucks & Busses AM: 34%	% of Trucks & Busses PM: 33%

#1 Motorcycles - 2 Axles
 #2 Passenger Cars - 2 Axles
 #3 Pickup Trucks, Vans, - 2 Axl
 #4 Busses

#5 Single Unit - 2 Axles, 6 Tires
 #6 Single Unit Truck - 3 Axles
 #7 Single Unit - 4 Axles
 #8 Double Unit - <5 Axles

#9 Double Unit - 5 Axles
 #10 Double Unit - >5 Axles
 #11 Multi-Unit 6 Axles
 #12 Multi-Unit <6 Axles

#13 Multi-Unit >6 Axles

Daily Classification Report

Prepared by: Southland Car Counters

Project #: 05-8016-001S

Date: 9/21/2005

Location: US 395 Post Mile 96.4 btwn Division Creek Rest Area and Rte 168

SOUTHBOUND

Time	#1	#2	#3	#4	#5	#6	#7	#8	#9	#10	#11	#12	#13	Total
00:00 AM	4	3	0	0	0	2	0	0	3	1	5	0	0	18
01:00	4	5	0	1	2	2	1	1	6	3	6	2	2	35
02:00	0	2	0	0	0	0	0	0	4	0	5	0	4	15
03:00	0	3	1	0	1	2	0	0	5	2	3	0	4	21
04:00	2	2	1	0	2	0	0	1	1	4	5	0	0	18
05:00	6	12	4	0	8	5	0	0	5	2	0	0	0	42
06:00	8	21	7	0	8	7	1	1	4	1	0	0	2	60
07:00	16	33	7	1	11	15	0	1	3	3	0	0	1	91
08:00	30	60	8	2	12	13	1	8	4	4	0	0	0	142
09:00	30	60	13	0	17	17	1	5	2	1	0	0	6	152
10:00	15	61	15	0	8	9	1	16	6	1	0	0	2	134
11:00	34	58	18	2	9	15	0	11	4	3	0	0	3	157
12:00 PM	21	54	11	0	15	20	0	11	5	5	0	0	2	144
13:00	30	73	9	0	13	19	1	9	10	2	0	0	1	167
14:00	22	54	16	2	15	11	0	9	6	4	0	0	1	140
15:00	27	81	14	3	12	14	0	2	8	7	0	0	2	170
16:00	20	49	14	1	14	10	3	2	1	8	0	0	1	123
17:00	25	61	7	1	5	14	1	3	2	8	0	0	5	132
18:00	28	32	10	0	9	6	1	3	4	10	1	0	2	106
19:00	18	31	4	1	4	4	0	4	5	9	0	0	1	81
20:00	15	23	2	0	0	4	1	0	13	8	1	0	2	69
21:00	9	13	6	0	6	3	0	2	8	7	1	0	2	57
22:00	7	9	1	0	3	2	0	1	8	2	2	0	0	35
23:00	2	5	3	0	3	0	0	1	3	0	1	0	1	19
Totals	373	805	171	14	177	194	12	91	120	95	30	2	44	2128
% of Totals	18%	38%	8%	1%	8%	9%	1%	4%	6%	4%	1%	0%	2%	100%
% AM	7%	15%	3%	0%	4%	4%	0%	2%	2%	1%	1%	0%	1%	42%
AM Peak Hour	11:00	10:00	11:00	08:00	09:00	09:00	01:00	10:00	01:00	04:00	01:00	01:00	09:00	11:00
Volume	34	61	18	2	17	17	1	16	6	4	6	2	6	157
% PM	11%	23%	5%	0%	5%	5%	0%	2%	3%	3%	0%		1%	58%
PM Peak Hour	13:00	15:00	14:00	15:00	12:00	12:00	16:00	12:00	20:00	18:00	22:00		17:00	15:00
Volume	30	81	16	3	15	20	3	11	13	10	2		5	170

Summary	Total				
Trucks & Busses:	Class (#4 thru #13):	779	% Trucks & Busses: 37%	% of Trucks & Busses AM: 39%	% of Trucks & Busses PM: 35%

#1 Motorcycles - 2 Axles
 #2 Passenger Cars - 2 Axles
 #3 Pickup Trucks, Vans, - 2 Axl
 #4 Busses

#5 Single Unit - 2 Axles, 6 Tires
 #6 Single Unit Truck - 3 Axles
 #7 Single Unit - 4 Axles
 #8 Double Unit - <5 Axles

#9 Double Unit - 5 Axles
 #10 Double Unit - >5 Axles
 #11 Multi-Unit 6 Axles
 #12 Multi-Unit <6 Axles

#13 Multi-Unit >6 Axles

Daily Classification Report

Prepared by: Southland Car Counters

Project #: 05-8016-001S

Date: 9/22/2005

Location: US 395 Post Mile 96.4 btwn Division Creek Rest Area and Rte 168

SOUTHBOUND

Time	#1	#2	#3	#4	#5	#6	#7	#8	#9	#10	#11	#12	#13	Total
00:00 AM	2	4	0	0	2	2	0	0	10	4	4	0	2	30
01:00	7	4	3	1	1	1	0	0	6	4	2	1	3	33
02:00	6	3	2	0	0	1	0	1	5	0	5	2	3	28
03:00	4	5	0	1	1	1	0	1	0	0	6	1	1	21
04:00	2	2	2	0	4	0	0	0	2	1	0	0	3	16
05:00	6	8	6	0	9	7	0	0	3	3	0	0	2	44
06:00	5	20	5	0	7	7	0	2	8	1	0	0	2	57
07:00	16	35	9	1	8	12	0	7	1	3	0	0	3	95
08:00	30	54	13	0	12	16	0	4	7	7	0	0	4	147
09:00	55	39	13	0	7	18	1	6	3	2	0	0	1	145
10:00	45	50	14	0	8	20	0	5	9	2	0	0	2	155
11:00	38	75	15	0	9	11	0	11	7	5	0	0	1	172
12:00 PM	36	64	9	1	15	17	0	5	13	4	1	0	2	167
13:00	19	80	21	0	13	17	1	4	0	5	0	0	3	163
14:00	31	87	10	3	14	26	0	5	2	5	0	0	2	185
15:00	11	60	16	0	13	11	0	5	5	11	0	0	0	132
16:00	30	46	13	0	15	18	1	9	3	5	0	0	1	141
17:00	36	56	11	1	7	15	1	4	2	4	2	0	0	139
18:00	34	46	9	1	6	13	0	2	2	8	0	0	2	123
19:00	21	30	4	0	5	10	0	3	2	9	0	0	2	86
20:00	13	33	6	2	1	5	1	0	2	9	0	0	0	72
21:00	19	14	6	0	5	4	1	0	3	4	0	0	6	62
22:00	6	11	4	0	1	4	0	0	3	10	0	0	1	40
23:00	10	12	2	1	0	1	0	0	0	3	0	0	2	31
Totals	482	838	193	12	163	237	6	74	98	109	20	4	48	2284
% of Totals	21%	37%	8%	1%	7%	10%	0%	3%	4%	5%	1%	0%	2%	100%
% AM	9%	13%	4%	0%	3%	4%	0%	2%	3%	1%	1%	0%	1%	41%
AM Peak Hour	09:00	11:00	11:00	01:00	08:00	10:00	09:00	11:00	08:00	03:00	02:00	08:00	11:00	
Volume	55	75	15	1	12	20	1	11	10	7	6	2	4	172
% PM	12%	24%	5%	0%	4%	6%	0%	2%	2%	3%	0%	1%	59%	
PM Peak Hour	12:00	14:00	13:00	14:00	12:00	14:00	13:00	16:00	12:00	15:00	17:00	21:00	14:00	
Volume	36	87	21	3	15	26	1	9	13	11	2	6	185	

Summary	<u>Total</u>				
Trucks & Busses:	Class (#4 thru #13):	771	% Trucks & Busses: 34%	% of Trucks & Busses AM: 37%	% of Trucks & Busses PM: 32%

#1 Motorcycles - 2 Axles
 #2 Passenger Cars - 2 Axles
 #3 Pickup Trucks, Vans, - 2 Axl
 #4 Busses

#5 Single Unit - 2 Axles, 6 Tires
 #6 Single Unit Truck - 3 Axles
 #7 Single Unit - 4 Axles
 #8 Double Unit - <5 Axles

#9 Double Unit - 5 Axles
 #10 Double Unit - >5 Axles
 #11 Multi-Unit 6 Axles
 #12 Multi-Unit <6 Axles

#13 Multi-Unit >6 Axles

Daily Classification Report

Prepared by: Southland Car Counters

Project #: 05-8016-001S

Date: 9/23/2005

Location: US 395 Post Mile 96.4 btwn Division Creek Rest Area and Rte 168

SOUTHBOUND

Time	#1	#2	#3	#4	#5	#6	#7	#8	#9	#10	#11	#12	#13	Total
00:00 AM	6	5	2	0	3	5	0	1	2	1	2	0	2	29
01:00	6	7	2	1	2	5	0	1	1	3	3	2	2	35
02:00	5	4	0	0	0	3	0	0	3	1	2	2	1	21
03:00	3	5	0	1	0	3	1	1	4	2	0	0	4	24
04:00	8	3	5	0	2	0	0	0	1	1	0	0	2	22
05:00	4	14	3	0	4	4	0	0	3	2	0	0	0	34
06:00	15	24	8	1	7	5	2	2	2	0	1	0	2	69
07:00	24	37	9	0	10	11	1	0	3	4	0	0	2	101
08:00	28	47	11	1	5	17	1	1	1	0	0	0	2	114
09:00	29	58	14	1	17	10	3	2	6	7	0	0	3	150
10:00	27	99	26	1	10	18	0	9	7	3	0	0	1	201
11:00	41	90	15	1	13	19	0	10	6	5	0	0	4	204
12:00 PM	25	71	14	2	14	24	0	9	5	6	0	0	0	170
13:00	24	124	24	0	15	25	1	11	6	2	0	0	1	233
14:00	24	104	18	1	21	18	2	5	10	9	0	0	3	215
15:00	38	59	13	0	13	18	0	7	3	5	0	0	2	158
16:00	23	74	16	0	10	19	0	7	6	2	0	0	2	159
17:00	26	71	11	0	12	13	0	3	0	4	0	0	0	140
18:00	33	43	10	0	8	15	1	5	2	1	0	0	3	121
19:00	18	17	4	0	3	13	0	4	1	2	1	0	3	66
20:00	16	38	7	0	4	12	0	4	1	5	0	0	2	89
21:00	23	23	4	1	5	7	1	3	4	3	0	0	1	75
22:00	12	24	4	0	0	6	0	0	5	5	0	1	1	58
23:00	5	12	4	0	3	0	0	2	2	5	1	0	0	34
Totals	463	1053	224	11	181	270	13	87	84	78	10	5	43	2522
% of Totals	18%	42%	9%	0%	7%	11%	1%	3%	3%	3%	0%	0%	2%	100%
% AM	8%	16%	4%	0%	3%	4%	0%	1%	2%	1%	0%	0%	1%	40%
AM Peak Hour	11:00	10:00	10:00	01:00	09:00	11:00	09:00	11:00	10:00	09:00	01:00	01:00	03:00	11:00
Volume	41	99	26	1	17	19	3	10	7	7	3	2	4	204
% PM	11%	26%	5%	0%	4%	7%	0%	2%	2%	2%	0%	0%	1%	60%
PM Peak Hour	15:00	13:00	13:00	12:00	14:00	13:00	14:00	13:00	14:00	14:00	19:00	22:00	14:00	13:00
Volume	38	124	24	2	21	25	2	11	10	9	1	1	3	233

Summary	<u>Total</u>			
Trucks & Busses:	Class (#4 thru #13):	782	% Trucks & Busses: 31%	% of Trucks & Busses AM: 32%
				% of Trucks & Busses PM: 30%

#1 Motorcycles - 2 Axles
 #2 Passenger Cars - 2 Axles
 #3 Pickup Trucks, Vans, - 2 Axl
 #4 Busses

#5 Single Unit - 2 Axles, 6 Tires
 #6 Single Unit Truck - 3 Axles
 #7 Single Unit - 4 Axles
 #8 Double Unit - <5 Axles

#9 Double Unit - 5 Axles
 #10 Double Unit - >5 Axles
 #11 Multi-Unit 6 Axles
 #12 Multi-Unit <6 Axles

#13 Multi-Unit >6 Axles

Daily Classification Report

Prepared by: Southland Car Counters

Project #: 05-8016-001S

Date: 9/24/2005

Location: US 395 Post Mile 96.4 btwn Division Creek Rest Area and Rte 168

SOUTHBOUND

Time	#1	#2	#3	#4	#5	#6	#7	#8	#9	#10	#11	#12	#13	Total
00:00 AM	6	4	2	0	2	5	0	1	2	0	2	1	0	25
01:00	5	8	1	0	0	1	0	1	3	1	0	0	0	20
02:00	7	6	1	0	2	4	0	0	4	3	4	1	2	34
03:00	5	1	2	0	2	0	0	1	2	3	1	0	3	20
04:00	3	7	1	0	1	2	0	0	1	2	0	0	0	17
05:00	14	12	5	1	2	3	0	2	2	2	0	0	2	45
06:00	7	16	7	0	6	4	0	1	0	1	0	0	1	43
07:00	11	23	8	0	5	8	0	4	4	1	0	0	0	64
08:00	28	39	8	0	2	19	1	3	5	4	0	0	1	110
09:00	30	47	13	0	4	20	0	4	5	4	0	0	2	129
10:00	36	77	10	1	8	13	0	0	3	2	0	0	1	151
11:00	38	64	14	1	12	20	0	9	2	3	0	0	1	164
12:00 PM	46	65	18	0	9	14	1	9	3	2	0	0	1	168
13:00	30	72	17	1	8	14	1	8	6	2	0	0	0	159
14:00	32	67	14	0	7	14	1	4	4	2	0	0	2	147
15:00	30	62	15	1	8	15	0	2	1	5	0	0	1	140
16:00	33	52	11	1	2	11	0	1	3	3	0	0	0	117
17:00	25	44	15	1	6	16	0	0	4	5	0	0	2	118
18:00	14	41	13	0	3	12	0	2	3	2	0	0	0	90
19:00	13	36	3	1	5	8	0	3	2	2	0	1	1	75
20:00	10	18	8	0	3	1	0	1	1	1	0	0	0	43
21:00	10	13	6	0	4	2	0	1	1	2	0	0	1	40
22:00	4	13	3	0	3	0	0	0	1	2	1	0	0	27
23:00	2	3	1	0	1	1	0	0	0	1	0	0	0	9
Totals	439	790	196	8	105	207	4	57	62	55	8	3	21	1955
% of Totals	22%	40%	10%	0%	5%	11%	0%	3%	3%	3%	0%	0%	1%	100%
% AM	10%	16%	4%	0%	2%	5%	0%	1%	2%	1%	0%	0%	1%	42%
AM Peak Hour	11:00	10:00	11:00	05:00	11:00	09:00	08:00	11:00	08:00	08:00	02:00		03:00	11:00
Volume	38	77	14	1	12	20	1	9	5	4	4	1	3	164
% PM	13%	25%	6%	0%	3%	6%	0%	2%	1%	1%	0%	0%	0%	58%
PM Peak Hour	12:00	13:00	12:00	13:00	12:00	17:00	12:00	12:00	13:00	15:00	22:00	19:00	14:00	12:00
Volume	46	72	18	1	9	16	1	9	6	5	1	1	2	168

Summary	<u>Total</u>				
Trucks & Busses:	Class (#4 thru #13):	530	% Trucks & Busses: <u>27%</u>	% of Trucks & Busses AM: <u>31%</u>	% of Trucks & Busses PM: <u>24%</u>

#1 Motorcycles - 2 Axles
 #2 Passenger Cars - 2 Axles
 #3 Pickup Trucks, Vans, - 2 Axl
 #4 Busses

#5 Single Unit - 2 Axles, 6 Tires
 #6 Single Unit Truck - 3 Axles
 #7 Single Unit - 4 Axles
 #8 Double Unit - <5 Axles

#9 Double Unit - 5 Axles
 #10 Double Unit - >5 Axles
 #11 Multi-Unit 6 Axles
 #12 Multi-Unit <6 Axles

#13 Multi-Unit >6 Axles

Daily Classification Report

Prepared by: Southland Car Counters

Project #: 05-8016-001S

Date: 9/25/2005

Location: US 395 Post Mile 96.4 btwn Division Creek Rest Area and Rte 168

SOUTHBOUND

Time	#1	#2	#3	#4	#5	#6	#7	#8	#9	#10	#11	#12	#13	Total
00:00 AM	1	8	3	0	2	1	0	0	0	0	1	0	0	16
01:00	0	4	1	0	0	1	0	0	0	1	0	0	0	7
02:00	1	6	1	0	1	0	0	0	0	0	0	0	0	9
03:00	0	3	1	0	1	0	0	1	1	0	0	0	0	7
04:00	1	8	2	0	1	2	0	2	0	0	0	0	0	16
05:00	5	14	5	0	0	5	0	0	1	0	0	0	0	30
06:00	11	20	7	0	3	9	0	2	0	0	0	0	1	53
07:00	23	29	15	0	2	12	0	0	3	0	0	0	0	84
08:00	59	61	8	0	10	23	0	6	3	0	0	0	0	170
09:00	44	84	25	0	20	21	0	15	6	1	0	0	1	217
10:00	61	102	30	0	24	38	0	8	7	3	0	0	1	274
11:00	87	143	32	0	18	28	1	16	10	5	0	0	2	342
12:00 PM	113	144	47	1	33	24	1	13	7	7	0	0	1	391
13:00	114	190	39	0	30	19	1	15	4	5	0	1	6	424
14:00	114	160	39	0	25	24	1	15	5	6	0	0	5	394
15:00	89	186	33	0	21	33	1	9	3	3	0	0	4	382
16:00	68	150	33	0	8	28	1	10	6	7	0	0	3	314
17:00	78	104	23	0	14	18	1	5	2	5	0	0	2	252
18:00	35	69	16	1	6	13	0	8	5	3	0	0	2	158
19:00	30	49	9	0	4	6	0	3	9	6	0	0	4	120
20:00	17	49	14	0	11	8	0	2	3	5	0	0	1	110
21:00	12	25	7	0	6	3	0	4	1	4	0	0	0	62
22:00	8	8	8	0	3	3	0	2	2	4	0	0	1	39
23:00	5	11	1	0	0	2	0	4	2	0	0	0	0	25
Totals	976	1627	399	2	243	321	7	140	80	65	1	1	34	3896
% of Totals	25%	42%	10%	0%	6%	8%	0%	4%	2%	2%	0%	0%	1%	100%
% AM	8%	12%	3%		2%	4%	0%	1%	1%	0%	0%		0%	31%
AM Peak Hour	11:00	11:00	11:00		10:00	10:00	11:00	11:00	11:00	11:00			11:00	11:00
Volume	87	143	32		24	38	1	16	10	5	1		2	342
% PM	18%	29%	7%	0%	4%	5%	0%	2%	1%	1%		0%	1%	69%
PM Peak Hour	13:00	13:00	12:00	12:00	12:00	15:00	12:00	13:00	19:00	12:00		13:00	13:00	13:00
Volume	114	190	47	1	33	33	1	15	9	7		1	6	424

Summary	<u>Total</u>													
Trucks & Busses:	Class (#4 thru #13): 894		% Trucks & Busses: 23%			% of Trucks & Busses AM: 26%			% of Trucks & Busses PM: 21%					

#1 Motorcycles - 2 Axles
 #2 Passenger Cars - 2 Axles
 #3 Pickup Trucks, Vans, - 2 Axl
 #4 Busses

#5 Single Unit - 2 Axles, 6 Tires
 #6 Single Unit Truck - 3 Axles
 #7 Single Unit - 4 Axles
 #8 Double Unit - <5 Axles

#9 Double Unit - 5 Axles
 #10 Double Unit - >5 Axles
 #11 Multi-Unit 6 Axles
 #12 Multi-Unit <6 Axles

#13 Multi-Unit >6 Axles

Daily Classification Report

Prepared by: Southland Car Counters

Project #: 05-8016-002N

Date: 9/19/2005

Location: US 395 Post Mile 123.7 btwn Ed Powers Rd and Pine Creek Rd

NORTHBOUND

Time	#1	#2	#3	#4	#5	#6	#7	#8	#9	#10	#11	#12	#13	Total
00:00 AM	0	16	4	0	0	2	0	0	1	1	3	1	2	30
01:00	1	7	1	1	0	0	0	0	2	0	1	0	0	13
02:00	1	3	1	0	0	1	0	0	0	0	0	0	2	8
03:00	0	6	1	0	0	0	0	0	1	1	0	0	1	10
04:00	4	11	2	1	1	1	0	0	2	0	0	0	0	22
05:00	3	24	11	1	7	7	0	1	5	0	1	0	0	60
06:00	11	100	32	1	17	23	0	3	8	2	0	0	0	197
07:00	20	103	40	1	17	25	3	3	6	4	0	0	2	224
08:00	22	94	31	1	12	14	0	5	5	3	0	0	0	187
09:00	19	89	32	4	18	19	0	3	4	1	0	0	2	191
10:00	16	122	31	0	14	3	1	12	8	1	1	0	1	210
11:00	20	114	25	1	13	14	1	8	3	1	0	0	0	200
12:00 PM	13	106	16	1	20	12	0	13	6	2	0	1	1	191
13:00	20	121	32	0	21	18	1	6	4	2	0	0	0	225
14:00	19	156	32	2	21	15	2	4	4	3	0	0	0	258
15:00	24	156	25	4	21	24	0	7	4	3	0	0	0	268
16:00	21	129	32	0	19	15	0	8	3	1	0	0	1	229
17:00	21	126	31	0	19	26	0	4	7	1	0	0	0	235
18:00	12	102	20	1	13	16	0	6	4	4	0	0	0	178
19:00	9	69	14	0	10	12	0	2	5	1	0	0	0	122
20:00	4	48	8	0	3	12	0	0	4	2	0	0	0	81
21:00	7	35	7	0	3	6	0	0	0	2	0	0	0	60
22:00	5	19	8	0	1	3	0	2	2	1	0	0	0	41
23:00	2	11	0	0	3	2	0	1	2	1	0	0	1	23
Totals	274	1767	436	19	253	270	8	88	90	37	6	2	13	3263
% of Totals	8%	54%	13%	1%	8%	8%	0%	3%	3%	1%	0%	0%	0%	100%
% AM	4%	21%	6%	0%	3%	3%	0%	1%	1%	0%	0%	0%	0%	41%
AM Peak Hour	08:00	10:00	07:00	09:00	09:00	07:00	07:00	10:00	06:00	07:00				07:00
Volume	22	122	40	4	18	25	3	12	8	4	3	1	2	224
% PM	5%	33%	7%	0%	5%	5%	0%	2%	1%	1%	0%	0%	59%	
PM Peak Hour	15:00	14:00	13:00	15:00	13:00	17:00	14:00	12:00	17:00	18:00		12:00	12:00	15:00
Volume	24	156	32	4	21	26	2	13	7	4		1	1	268

Summary	<u>Total</u>				
Trucks & Busses:	Class (#4 thru #13):	786	% Trucks & Busses: 24%	% of Trucks & Busses AM: 25%	% of Trucks & Busses PM: 24%

#1 Motorcycles - 2 Axles
 #2 Passenger Cars - 2 Axles
 #3 Pickup Trucks, Vans, - 2 Axl
 #4 Busses

#5 Single Unit - 2 Axles, 6 Tires
 #6 Single Unit Truck - 3 Axles
 #7 Single Unit - 4 Axles
 #8 Double Unit - <5 Axles

#9 Double Unit - 5 Axles
 #10 Double Unit - >5 Axles
 #11 Multi-Unit 6 Axles
 #12 Multi-Unit <6 Axles

#13 Multi-Unit >6 Axles

Daily Classification Report

Prepared by: Southland Car Counters

Project #: 05-8016-002N

Date: 9/20/2005

Location: US 395 Post Mile 123.7 btwn Ed Powers Rd and Pine Creek Rd

NORTHBOUND

Time	#1	#2	#3	#4	#5	#6	#7	#8	#9	#10	#11	#12	#13	Total
00:00 AM	3	11	1	1	2	2	0	2	3	1	0	0	0	26
01:00	1	3	1	0	0	2	0	0	1	0	2	0	0	10
02:00	1	4	1	1	1	0	0	0	2	0	1	0	2	13
03:00	2	3	2	0	0	1	0	0	1	1	6	1	0	17
04:00	2	8	3	0	0	0	0	0	0	1	6	0	1	21
05:00	4	24	9	1	6	5	0	1	2	1	2	1	0	56
06:00	11	90	35	0	24	19	1	2	6	2	3	0	2	195
07:00	13	125	26	0	18	25	0	4	7	4	2	0	2	226
08:00	29	70	29	2	23	24	1	6	4	2	1	0	1	192
09:00	39	99	22	2	18	17	1	9	5	3	0	0	0	215
10:00	24	92	19	1	14	29	0	7	2	1	0	0	0	189
11:00	14	102	13	2	7	21	0	7	6	3	0	0	0	175
12:00 PM	24	95	21	0	16	22	1	5	2	5	0	0	0	191
13:00	34	91	27	0	20	21	1	5	2	2	0	0	0	203
14:00	27	118	30	2	17	22	2	8	3	0	1	0	0	230
15:00	39	125	23	1	17	25	1	4	3	4	0	0	1	243
16:00	41	102	22	0	20	30	1	3	6	1	0	0	4	230
17:00	19	90	23	0	14	35	0	1	2	2	0	0	2	188
18:00	14	84	9	1	6	19	1	1	2	5	0	0	0	142
19:00	12	49	10	1	5	11	1	4	4	2	0	0	1	100
20:00	11	39	2	0	5	9	0	5	3	2	1	0	1	78
21:00	4	24	12	0	3	6	0	1	2	0	0	0	1	53
22:00	5	14	3	0	3	1	0	1	5	0	1	0	0	33
23:00	2	15	5	0	3	2	0	1	2	3	0	0	0	33
Totals	375	1477	348	15	242	348	11	77	75	45	26	2	18	3059
% of Totals	12%	48%	11%	0%	8%	11%	0%	3%	2%	1%	1%	0%	1%	100%
% AM	5%	21%	5%	0%	4%	5%	0%	1%	1%	1%	1%	0%	0%	44%
AM Peak Hour	09:00	07:00	06:00	08:00	06:00	10:00	06:00	09:00	07:00	07:00	03:00	03:00	02:00	07:00
Volume	39	125	35	2	24	29	1	9	7	4	6	1	2	226
% PM	8%	28%	6%	0%	4%	7%	0%	1%	1%	1%	0%	0%	0%	56%
PM Peak Hour	16:00	15:00	14:00	14:00	13:00	17:00	14:00	14:00	16:00	12:00	14:00	14:00	16:00	15:00
Volume	41	125	30	2	20	35	2	8	6	5	1	4	4	243

Summary	<u>Total</u>				
Trucks & Busses:	Class (#4 thru #13):	859	% Trucks & Busses: <u>28%</u>	% of Trucks & Busses AM: <u>30%</u>	% of Trucks & Busses PM: <u>27%</u>

#1 Motorcycles - 2 Axles
 #2 Passenger Cars - 2 Axles
 #3 Pickup Trucks, Vans, - 2 Axl
 #4 Busses

#5 Single Unit - 2 Axles, 6 Tires
 #6 Single Unit Truck - 3 Axles
 #7 Single Unit - 4 Axles
 #8 Double Unit - <5 Axles

#9 Double Unit - 5 Axles
 #10 Double Unit - >5 Axles
 #11 Multi-Unit 6 Axles
 #12 Multi-Unit <6 Axles

#13 Multi-Unit >6 Axles

Daily Classification Report

Prepared by: Southland Car Counters

Project #: 05-8016-002N

Date: 9/21/2005

Location: US 395 Post Mile 123.7 btwn Ed Powers Rd and Pine Creek Rd

NORTHBOUND

Time	#1	#2	#3	#4	#5	#6	#7	#8	#9	#10	#11	#12	#13	Total
00:00 AM	0	9	2	0	1	2	0	1	1	0	0	0	1	17
01:00	0	3	1	0	0	1	0	0	2	3	2	0	0	12
02:00	1	2	0	0	0	1	0	1	1	0	7	0	1	14
03:00	1	6	0	0	1	0	1	0	2	0	4	1	1	17
04:00	0	7	2	0	0	1	0	2	4	2	6	1	2	27
05:00	3	23	10	0	8	5	0	2	1	2	4	1	0	59
06:00	19	93	34	2	27	19	0	2	3	0	1	0	1	201
07:00	27	109	31	1	18	32	1	8	6	2	0	0	2	237
08:00	16	110	33	1	27	22	3	11	7	2	2	0	0	234
09:00	31	100	38	2	17	16	1	7	6	6	0	0	0	224
10:00	42	109	24	4	16	24	2	7	6	2	0	0	2	238
11:00	32	137	31	1	22	18	0	5	2	2	1	0	0	251
12:00 PM	23	131	25	1	7	14	2	13	6	1	0	0	2	225
13:00	39	110	25	3	11	15	1	3	7	2	0	0	0	216
14:00	29	143	21	0	11	7	0	8	2	5	0	0	0	226
15:00	29	133	27	2	18	17	0	5	5	2	0	0	2	240
16:00	27	144	37	0	24	15	0	7	9	2	0	0	1	266
17:00	15	150	36	1	12	15	0	6	8	7	0	0	2	252
18:00	15	108	24	1	11	21	1	3	2	3	0	0	1	190
19:00	13	79	26	0	10	5	0	1	5	4	1	0	0	144
20:00	14	44	7	1	5	11	0	0	4	5	0	0	2	93
21:00	6	35	12	0	7	4	0	1	2	2	0	0	0	69
22:00	5	32	3	0	5	2	0	2	1	2	2	0	0	54
23:00	3	18	7	0	2	1	0	2	1	1	0	0	0	35
Totals	390	1835	456	20	260	268	12	97	93	57	30	3	20	3541
% of Totals	11%	52%	13%	1%	7%	8%	0%	3%	3%	2%	1%	0%	1%	100%
% AM	5%	20%	6%	0%	4%	4%	0%	1%	1%	1%	1%	0%	0%	43%
AM Peak Hour	10:00	11:00	09:00	10:00	06:00	07:00	08:00	08:00	08:00	09:00	02:00	03:00	04:00	11:00
Volume	42	137	38	4	27	32	3	11	7	6	7	1	2	251
% PM	6%	32%	7%	0%	3%	4%	0%	1%	1%	1%	0%	0%	0%	57%
PM Peak Hour	13:00	17:00	16:00	13:00	16:00	18:00	12:00	12:00	16:00	17:00	22:00	12:00	16:00	
Volume	39	150	37	3	24	21	2	13	9	7	2	2	2	266

Summary	<u>Total</u>			
Trucks & Busses:	Class (#4 thru #13):	860	% Trucks & Busses: 24%	% of Trucks & Busses AM: 29%
				% of Trucks & Busses PM: 21%

#1 Motorcycles - 2 Axles
 #2 Passenger Cars - 2 Axles
 #3 Pickup Trucks, Vans, - 2 Axl
 #4 Busses

#5 Single Unit - 2 Axles, 6 Tires
 #6 Single Unit Truck - 3 Axles
 #7 Single Unit - 4 Axles
 #8 Double Unit - <5 Axles

#9 Double Unit - 5 Axles
 #10 Double Unit - >5 Axles
 #11 Multi-Unit 6 Axles
 #12 Multi-Unit <6 Axles

#13 Multi-Unit >6 Axles

Daily Classification Report

Prepared by: Southland Car Counters

Project #: 05-8016-002N

Date: 9/22/2005

Location: US 395 Post Mile 123.7 btwn Ed Powers Rd and Pine Creek Rd

NORTHBOUND

Time	#1	#2	#3	#4	#5	#6	#7	#8	#9	#10	#11	#12	#13	Total
00:00 AM	2	8	3	0	0	3	0	3	0	1	1	0	0	21
01:00	0	4	5	0	0	1	0	0	3	1	1	1	0	16
02:00	3	4	2	0	0	0	0	0	0	1	3	1	1	15
03:00	3	5	3	1	0	1	0	0	3	1	4	0	0	21
04:00	1	7	0	1	2	2	0	0	10	0	8	1	1	33
05:00	3	34	12	1	6	6	0	5	4	0	2	0	1	74
06:00	18	92	32	2	28	19	1	7	4	1	1	0	2	207
07:00	32	110	35	1	20	32	0	1	5	7	2	0	2	247
08:00	67	79	27	3	17	27	2	7	2	6	0	0	0	237
09:00	59	91	26	2	19	27	1	6	3	4	0	0	2	240
10:00	68	79	32	0	18	30	1	6	3	6	0	0	1	244
11:00	42	139	37	1	26	17	0	17	4	1	2	0	1	287
12:00 PM	52	137	28	1	29	20	0	10	4	3	1	0	2	287
13:00	39	159	38	0	27	12	0	8	8	3	1	1	1	297
14:00	43	172	41	1	27	11	1	9	5	0	1	0	0	311
15:00	39	160	35	3	20	24	0	6	7	2	0	0	1	297
16:00	45	129	22	2	16	27	1	5	2	2	0	0	0	251
17:00	46	142	35	0	15	31	0	12	2	6	0	0	2	291
18:00	20	83	16	0	9	25	2	4	3	3	1	0	2	168
19:00	12	69	18	0	14	20	0	1	1	3	0	0	0	138
20:00	15	64	10	0	5	12	0	6	0	4	0	0	2	118
21:00	13	61	13	0	4	12	0	3	3	0	0	0	0	109
22:00	12	38	10	0	4	12	0	3	1	0	0	0	0	80
23:00	10	22	11	0	7	6	1	0	4	2	0	0	0	63
Totals	644	1888	491	19	313	377	10	119	81	57	28	4	21	4052
% of Totals	16%	47%	12%	0%	8%	9%	0%	3%	2%	1%	1%	0%	1%	100%
% AM	7%	16%	5%	0%	3%	4%	0%	1%	1%	1%	1%	0%	0%	41%
AM Peak Hour	10:00	11:00	11:00	08:00	06:00	07:00	08:00	11:00	04:00	07:00	04:00	01:00	06:00	11:00
Volume	68	139	37	3	28	32	2	17	10	7	8	1	2	287
% PM	9%	31%	7%	0%	4%	5%	0%	2%	1%	1%	0%	0%	0%	59%
PM Peak Hour	12:00	14:00	14:00	15:00	12:00	17:00	18:00	17:00	13:00	17:00	12:00	13:00	12:00	14:00
Volume	52	172	41	3	29	31	2	12	8	6	1	1	2	311

Summary	<u>Total</u>			
Trucks & Busses:	Class (#4 thru #13):	1029	% Trucks & Busses: 25%	% of Trucks & Busses AM: 29%
				% of Trucks & Busses PM: 23%

#1 Motorcycles - 2 Axles
 #2 Passenger Cars - 2 Axles
 #3 Pickup Trucks, Vans, - 2 Axl
 #4 Busses

#5 Single Unit - 2 Axles, 6 Tires
 #6 Single Unit Truck - 3 Axles
 #7 Single Unit - 4 Axles
 #8 Double Unit - <5 Axles

#9 Double Unit - 5 Axles
 #10 Double Unit - >5 Axles
 #11 Multi-Unit 6 Axles
 #12 Multi-Unit <6 Axles

#13 Multi-Unit >6 Axles

Daily Classification Report

Prepared by: Southland Car Counters

Project #: 05-8016-002N

Date: 9/23/2005

Location: US 395 Post Mile 123.7 btwn Ed Powers Rd and Pine Creek Rd

NORTHBOUND

Time	#1	#2	#3	#4	#5	#6	#7	#8	#9	#10	#11	#12	#13	Total
00:00 AM	7	24	2	0	1	3	0	0	1	1	0	0	0	39
01:00	3	18	3	1	0	3	0	1	3	1	1	0	2	36
02:00	5	12	1	0	1	1	0	0	3	2	0	0	1	26
03:00	2	8	4	0	2	2	0	0	0	1	4	1	2	26
04:00	4	8	2	0	3	3	0	0	1	0	1	0	5	27
05:00	9	23	9	0	4	11	0	1	1	1	0	1	0	60
06:00	35	76	20	0	21	24	2	5	1	3	0	0	0	187
07:00	40	81	27	0	16	28	2	2	5	1	1	0	0	203
08:00	41	96	24	2	22	32	0	7	3	2	0	0	1	230
09:00	40	122	26	1	25	22	0	14	10	3	0	0	2	265
10:00	53	143	28	0	16	34	0	13	5	3	0	0	1	296
11:00	34	127	36	0	18	33	1	4	3	6	0	0	2	264
12:00 PM	46	128	32	0	18	22	1	3	3	2	0	0	0	255
13:00	62	106	38	0	12	33	2	7	5	1	1	0	0	267
14:00	41	143	39	1	17	27	0	8	6	1	0	0	4	287
15:00	38	148	24	1	24	27	1	4	6	0	0	0	0	273
16:00	39	152	29	0	20	34	1	3	4	0	0	0	0	282
17:00	30	151	22	2	20	29	1	5	2	2	0	0	0	264
18:00	24	137	17	0	15	28	0	2	0	1	0	0	0	224
19:00	11	100	22	0	14	16	0	2	1	0	0	0	2	168
20:00	8	70	23	0	10	18	0	4	1	0	0	0	1	135
21:00	21	75	21	0	10	15	0	1	0	0	0	0	0	143
22:00	8	79	14	1	9	5	0	3	2	1	0	0	1	123
23:00	11	49	8	2	4	8	0	1	0	0	1	0	0	84
Totals	612	2076	471	11	302	458	11	90	66	32	9	2	24	4164
% of Totals	15%	50%	11%	0%	7%	11%	0%	2%	2%	1%	0%	0%	1%	100%
% AM	7%	18%	4%	0%	3%	5%	0%	1%	1%	1%	0%	0%	0%	40%
AM Peak Hour	10:00	10:00	11:00	08:00	09:00	10:00	06:00	09:00	09:00	11:00	03:00	03:00	04:00	10:00
Volume	53	143	36	2	25	34	2	14	10	6	4	1	5	296
% PM	8%	32%	7%	0%	4%	6%	0%	1%	1%	0%	0%	0%	0%	60%
PM Peak Hour	13:00	16:00	14:00	17:00	15:00	16:00	13:00	14:00	14:00	12:00	13:00	14:00	14:00	14:00
Volume	62	152	39	2	24	34	2	8	6	2	1	4	287	

Summary	<u>Total</u>				
Trucks & Busses:	Class (#4 thru #13):	1005	% Trucks & Busses: 24%	% of Trucks & Busses AM: 28%	% of Trucks & Busses PM: 22%

#1 Motorcycles - 2 Axles
 #2 Passenger Cars - 2 Axles
 #3 Pickup Trucks, Vans, - 2 Axl
 #4 Busses

#5 Single Unit - 2 Axles, 6 Tires
 #6 Single Unit Truck - 3 Axles
 #7 Single Unit - 4 Axles
 #8 Double Unit - <5 Axles

#9 Double Unit - 5 Axles
 #10 Double Unit - >5 Axles
 #11 Multi-Unit 6 Axles
 #12 Multi-Unit <6 Axles

#13 Multi-Unit >6 Axles

Daily Classification Report

Prepared by: Southland Car Counters

Project #: 05-8016-002N

Date: 9/24/2005

Location: US 395 Post Mile 123.7 btwn Ed Powers Rd and Pine Creek Rd

NORTHBOUND

Time	#1	#2	#3	#4	#5	#6	#7	#8	#9	#10	#11	#12	#13	Total
00:00 AM	6	45	15	1	7	8	0	0	1	0	0	0	0	83
01:00	6	23	6	0	1	3	0	1	0	0	0	0	0	40
02:00	4	10	4	0	2	0	0	1	0	1	0	0	0	22
03:00	8	9	1	0	0	4	0	1	0	0	1	1	0	25
04:00	2	12	3	0	2	0	0	0	1	4	1	0	1	26
05:00	11	19	13	1	2	8	0	1	2	1	1	0	0	59
06:00	19	42	18	0	7	12	0	2	1	1	0	0	2	104
07:00	23	42	9	0	14	17	0	1	0	0	0	0	2	108
08:00	33	83	21	0	14	20	1	3	4	1	0		0	180
09:00	45	59	18	0	14	28	0	5	2	1	0	0	1	173
10:00	42	71	18	0	10	33	0	5	3	0	0	0	1	183
11:00	29	100	23	1	15	27	0	5	3	3	0	0	1	207
12:00 PM	30	107	28	1	11	24	0	11	2	2	0	0	0	216
13:00	40	101	22	1	10	28	0	10	2	1	0	0	1	216
14:00	31	91	29	0	12	20	0	2	0	3	0	0	1	189
15:00	33	116	25	0	18	26	1	3	0	3	0	1	0	226
16:00	31	84	17	1	6	23	0	4	5	0	0	0	0	171
17:00	21	91	20	0	11	16	0	2	0	1	0	0	1	163
18:00	16	74	14	1	3	18	0	1	1	2	0	0	0	130
19:00	9	56	10	0	6	8	0	0	1	0	0	0	0	90
20:00	9	50	8	1	4	5	0	1	1	1	0	0	0	80
21:00	6	35	6	0	5	13	0	0	1	0	0	0	0	66
22:00	2	24	5	0	2	6	0	0	0	0	0	0	0	39
23:00	1	21	3	0	4	3	0	1	0	0	0	0	0	33
Totals	457	1365	336	8	180	350	2	60	30	25	3	2	11	2829
% of Totals	16%	48%	12%	0%	6%	12%	0%	2%	1%	1%	0%	0%	0%	100%
% AM	8%	18%	5%	0%	3%	6%	0%	1%	1%	0%	0%	0%	0%	43%
AM Peak Hour	09:00	11:00	11:00		11:00	10:00	08:00	09:00	08:00	04:00	03:00	03:00	06:00	11:00
Volume	45	100	23	1	15	33	1	5	4	4	1	1	2	207
% PM	8%	30%	7%	0%	3%	7%	0%	1%	0%	0%		0%	0%	57%
PM Peak Hour	13:00	15:00	14:00	12:00	15:00	13:00	15:00	12:00	16:00	14:00		15:00	13:00	15:00
Volume	40	116	29	1	18	28	1	11	5	3		1	1	226

Summary	Total				
Trucks & Busses:	Class (#4 thru #13):	671	% Trucks & Busses: 24%	% of Trucks & Busses AM: 26%	% of Trucks & Busses PM: 22%

#1 Motorcycles - 2 Axles
 #2 Passenger Cars - 2 Axles
 #3 Pickup Trucks, Vans, - 2 Axl
 #4 Busses

#5 Single Unit - 2 Axles, 6 Tires
 #6 Single Unit Truck - 3 Axles
 #7 Single Unit - 4 Axles
 #8 Double Unit - <5 Axles

#9 Double Unit - 5 Axles
 #10 Double Unit - >5 Axles
 #11 Multi-Unit 6 Axles
 #12 Multi-Unit <6 Axles

#13 Multi-Unit >6 Axles

Daily Classification Report

Prepared by: Southland Car Counters

Project #: 05-8016-002N

Date: 9/25/2005

Location: US 395 Post Mile 123.7 btwn Ed Powers Rd and Pine Creek Rd

NORTHBOUND

Time	#1	#2	#3	#4	#5	#6	#7	#8	#9	#10	#11	#12	#13	Total
00:00 AM	3	12	1	0	0	2	0	0	0	0	1	0	0	19
01:00	1	5	2	0	3	3	0	0	1	0	0	0	1	16
02:00	1	5	0	0	0	2	0	0	1	0	0	0	0	9
03:00	2	4	2	0	1	1	0	0	0	0	0	0	0	10
04:00	0	5	1	0	1	1	0	1	0	1	0	0	0	10
05:00	3	12	5	0	2	6	0	1	1	0	0	0	0	30
06:00	7	14	12	0	4	5	0	1	0	1	0	0	0	44
07:00	16	14	4	1	3	13	0	2	0	0	0	0	0	53
08:00	28	47	9	0	9	12	0	0	4	1	0	0	0	110
09:00	21	74	16	1	9	25	0	2	1	2	0	0	0	151
10:00	32	75	20	0	9	24	0	2	1	1	0	0	0	164
11:00	34	83	15	0	11	28	0	6	1	1	1	0	1	181
12:00 PM	28	121	24	0	19	34	0	9	1	0	1	0	1	238
13:00	38	113	14	1	15	32	2	5	0	3	0	0	0	223
14:00	34	116	21	1	9	23	0	6	3	2	0	0	2	217
15:00	33	126	23	0	13	28	0	3	3	1	0	0	1	231
16:00	36	122	16	0	19	28	1	6	4	2	0	0	0	234
17:00	24	86	20	0	9	28	0	2	1	3	0	0	2	175
18:00	29	64	8	0	8	17	0	3	0	1	0	0	1	131
19:00	19	71	16	0	6	13	0	0	1	5	0	0	0	131
20:00	13	43	20	0	10	13	0	1	0	0	0	0	0	100
21:00	16	40	10	0	10	12	0	1	4	2	0	0	1	96
22:00	6	26	7	0	2	4	0	1	0	0	1	0	0	47
23:00	5	21	0	0	7	3	0	1	1	0	1	0	4	43
Totals	429	1299	266	4	179	357	3	53	28	26	5		14	2663
% of Totals	16%	49%	10%	0%	7%	13%	0%	2%	1%	1%	0%		1%	100%
% AM	6%	13%	3%	0%	2%	5%		1%	0%	0%	0%		0%	30%
AM Peak Hour	11:00	11:00	10:00	07:00	11:00	11:00		11:00	08:00	09:00			01:00	11:00
Volume	34	83	20	1	11	28		6	4	2	1		1	181
% PM	11%	36%	7%	0%	5%	9%	0%	1%	1%	1%	0%		0%	70%
PM Peak Hour	13:00	15:00	12:00	13:00	12:00	12:00	13:00	12:00	16:00	19:00	12:00		23:00	12:00
Volume	38	126	24	1	19	34	2	9	4	5	1		4	238

Summary	<u>Total</u>				
Trucks & Busses:	Class (#4 thru #13):	669	<u>% Trucks & Busses: 25%</u>	<u>% of Trucks & Busses AM: 27%</u>	<u>% of Trucks & Busses PM: 24%</u>

#1 Motorcycles - 2 Axles
 #2 Passenger Cars - 2 Axles
 #3 Pickup Trucks, Vans, - 2 Axl
 #4 Busses

#5 Single Unit - 2 Axles, 6 Tires
 #6 Single Unit Truck - 3 Axles
 #7 Single Unit - 4 Axles
 #8 Double Unit - <5 Axles

#9 Double Unit - 5 Axles
 #10 Double Unit - >5 Axles
 #11 Multi-Unit 6 Axles
 #12 Multi-Unit <6 Axles

#13 Multi-Unit >6 Axles

Daily Classification Report

Prepared by: Southland Car Counters

Project #: 05-8016-002S

Date: 9/19/2005

Location: US 395 Post Mile 123.7 btwn Ed Powers Rd and Pine Creek Rd

SOUTHBOUND

Time	#1	#2	#3	#4	#5	#6	#7	#8	#9	#10	#11	#12	#13	Total
00:00 AM	1	11	1	0	4	0	0	1	2	0	1	0	0	21
01:00	0	7	0	0	0	0	0	0	4	0	0	0	0	11
02:00	0	5	1	1	0	0	0	0	0	0	0	0	0	7
03:00	0	5	0	0	0	0	0	1	2	0	0	0	0	8
04:00	1	8	3	0	1	0	0	0	1	0	0	1	0	15
05:00	0	15	6	0	1	0	0	0	2	0	0	0	0	24
06:00	0	55	14	0	7	4	0	0	3	0	0	0	0	83
07:00	12	137	34	3	18	2	0	2	4	0	0	0	0	212
08:00	2	155	30	0	23	6	0	9	2	0	0	0	0	227
09:00	5	189	59	1	29	4	0	22	6	0	1	0	0	316
10:00	3	227	49	0	21	3	0	21	6	0	0	0	0	330
11:00	6	233	66	2	27	3	0	17	6	1	1	0	0	362
12:00 PM	6	219	56	4	30	3	0	35	10	1	0	1	0	365
13:00	4	193	51	4	34	1	1	14	7	0	1	0	1	311
14:00	7	192	62	3	33	6	1	19	10	1	0	0	0	334
15:00	2	214	56	4	29	5	0	20	10	0	0	0	2	342
16:00	6	220	74	1	37	3	0	8	11	0	0	0	0	360
17:00	8	214	49	2	32	4	0	10	12	0	2	0	1	334
18:00	4	129	33	0	26	1	0	7	16	0	0	0	1	217
19:00	3	92	19	0	11	1	0	3	14	0	0	0	0	143
20:00	2	69	12	0	6	0	0	3	8	1	1	0	1	103
21:00	0	34	8	1	5	1	0	2	11	0	2	0	0	64
22:00	1	23	2	0	3	0	0	1	6	0	0	1	0	37
23:00	1	9	2	0	2	1	0	0	4	0	1	1	0	21
Totals	74	2655	687	26	379	48	2	195	157	4	10	4	6	4247
% of Totals	2%	63%	16%	1%	9%	1%	0%	5%	4%	0%	0%	0%	0%	100%
% AM	1%	25%	6%	0%	3%	1%		2%	1%	0%	0%	0%		38%
AM Peak Hour	07:00	11:00	11:00	07:00	09:00	08:00		09:00	09:00	11:00		04:00		11:00
Volume	12	233	66	3	29	6		22	6	1	1	1		362
% PM	1%	38%	10%	0%	6%	1%	0%	3%	3%	0%	0%	0%	0%	62%
PM Peak Hour	17:00	16:00	16:00	12:00	16:00	14:00	13:00	12:00	18:00	12:00	17:00	12:00	15:00	12:00
Volume	8	220	74	4	37	6	1	35	16	1	2	1	2	365

Summary	<u>Total</u>				
Trucks & Busses:	Class (#4 thru #13):	831	% Trucks & Busses: 20%	% of Trucks & Busses AM: 17%	% of Trucks & Busses PM: 21%

#1 Motorcycles - 2 Axles
 #2 Passenger Cars - 2 Axles
 #3 Pickup Trucks, Vans, - 2 Axl
 #4 Busses

#5 Single Unit - 2 Axles, 6 Tires
 #6 Single Unit Truck - 3 Axles
 #7 Single Unit - 4 Axles
 #8 Double Unit - <5 Axles

#9 Double Unit - 5 Axles
 #10 Double Unit - >5 Axles
 #11 Multi-Unit 6 Axles
 #12 Multi-Unit <6 Axles

#13 Multi-Unit >6 Axles

Daily Classification Report

Prepared by: Southland Car Counters

Project #: 05-8016-002S

Date: 9/20/2005

Location: US 395 Post Mile 123.7 btwn Ed Powers Rd and Pine Creek Rd

SOUTHBOUND

Time	#1	#2	#3	#4	#5	#6	#7	#8	#9	#10	#11	#12	#13	Total
00:00 AM	1	6	2	0	1	0	0	2	3	0	9	2	2	28
01:00	0	2	3	0	1	0	0	0	5	0	7	1	2	21
02:00	0	3	1	0	0	0	0	1	2	0	1	2	2	12
03:00	1	3	1	0	2	0	0	0	1	0	1	0	0	9
04:00	0	7	0	0	1	0	0	0	0	0	0	3	1	12
05:00	1	19	1	0	1	0	0	0	2	0	0	0	0	24
06:00	1	47	10	1	8	1	0	0	1	1	1	0	0	71
07:00	3	120	23	2	17	0	1	3	7	0	0	0	0	176
08:00	3	149	38	0	15	1	0	8	7	0	2	0	0	223
09:00	0	156	28	0	17	1	1	6	5	0	0	0	0	214
10:00	2	154	50	0	20	2	0	7	3	1	1	0	0	240
11:00	0	177	33	1	23	3	0	15	5	1	0	0	0	258
12:00 PM	4	171	44	2	36	7	1	10	5	0	0	0	0	280
13:00	1	171	47	2	18	2	1	18	7	0	0	0	2	269
14:00	3	165	44	1	26	6	0	8	9	0	0	0	0	262
15:00	5	178	60	3	30	4	0	12	10	2	0	1	1	306
16:00	5	161	50	1	42	6	1	7	11	0	0	0	1	285
17:00	4	177	34	1	35	7	0	6	6	1	0	0	0	271
18:00	4	130	26	0	21	6	0	4	15	0	1	0	1	208
19:00	2	76	24	0	12	1	0	3	8	0	0	0	1	127
20:00	1	59	13	3	7	0	0	4	9	0	1	1	0	98
21:00	1	40	7	0	4	1	0	4	5	0	1	0	0	63
22:00	0	26	4	0	2	1	0	1	4	0	0	0	0	38
23:00	0	11	4	0	1	0	0	0	4	0	0	1	0	21
Totals	42	2208	547	17	340	49	5	119	134	6	25	11	13	3516
% of Totals	1%	63%	16%	0%	10%	1%	0%	3%	4%	0%	1%	0%	0%	100%
% AM	0%	24%	5%	0%	3%	0%	0%	1%	1%	0%	1%	0%	0%	37%
AM Peak Hour	07:00	11:00	10:00	07:00	11:00	11:00	07:00	11:00	07:00	06:00		04:00		11:00
Volume	3	177	50	2	23	3	1	15	7	1	9	3	2	258
% PM	1%	39%	10%	0%	7%	1%	0%	2%	3%	0%	0%	0%	0%	63%
PM Peak Hour	15:00	15:00	15:00	15:00	16:00	12:00	12:00	13:00	18:00	15:00	18:00	15:00	13:00	15:00
Volume	5	178	60	3	42	7	1	18	15	2	1	1	2	306

Summary	<u>Total</u>													
Trucks & Busses:	Class (#4 thru #13): 719		% Trucks & Busses: 20%			% of Trucks & Busses AM: 19%			% of Trucks & Busses PM: 21%					

#1 Motorcycles - 2 Axles
 #2 Passenger Cars - 2 Axles
 #3 Pickup Trucks, Vans, - 2 Axl
 #4 Busses

#5 Single Unit - 2 Axles, 6 Tires
 #6 Single Unit Truck - 3 Axles
 #7 Single Unit - 4 Axles
 #8 Double Unit - <5 Axles

#9 Double Unit - 5 Axles
 #10 Double Unit - >5 Axles
 #11 Multi-Unit 6 Axles
 #12 Multi-Unit <6 Axles

#13 Multi-Unit >6 Axles

Daily Classification Report

Prepared by: Southland Car Counters

Project #: 05-8016-002S

Date: 9/21/2005

Location: US 395 Post Mile 123.7 btwn Ed Powers Rd and Pine Creek Rd

SOUTHBOUND

Time	#1	#2	#3	#4	#5	#6	#7	#8	#9	#10	#11	#12	#13	Total
00:00 AM	0	4	0	1	1	0	0	0	4	0	9	1	2	22
01:00	0	3	0	0	1	0	0	1	6	0	6	1	1	19
02:00	0	6	1	0	2	0	0	0	2	0	3	1	0	15
03:00	0	3	2	0	0	0	0	0	1	0	1	1	1	9
04:00	0	5	1	0	1	0	0	0	1	0	1	1	0	10
05:00	0	15	2	0	1	0	0	1	2	0	0	0	0	21
06:00	2	48	13	0	8	1	1	0	1	0	0	0	0	74
07:00	5	116	28	1	18	1	0	4	4	0	0	0	0	177
08:00	10	144	42	1	20	1	0	8	2	1	0	0	0	229
09:00	4	123	45	1	13	3	0	14	7	1	2	0	0	213
10:00	3	146	42	0	16	0	0	13	4	1	0	1	0	226
11:00	3	155	44	1	26	3	0	13	14	1	0	0	0	260
12:00 PM	8	170	43	2	25	4	0	12	14	1	2	0	0	281
13:00	2	148	51	2	19	3	0	13	13	0	1	0	0	252
14:00	2	173	48	2	26	4	0	12	11	1	0	0	1	280
15:00	4	175	41	2	33	7	0	10	6	0	0	0	0	278
16:00	8	202	62	3	39	2	0	10	12	0	1	0	1	340
17:00	7	210	59	0	26	1	0	2	17	0	3	0	1	326
18:00	2	133	38	0	29	1	0	4	15	1	0	0	0	223
19:00	3	93	21	1	19	4	0	2	17	1	1	0	1	163
20:00	1	59	18	0	7	2	0	1	6	1	0	1	2	98
21:00	0	36	9	0	2	2	0	0	8	0	4	0	0	61
22:00	0	30	7	0	3	1	0	1	3	0	0	0	0	45
23:00	0	13	7	0	0	1	0	0	2	0	2	1	0	26
Totals	64	2210	624	17	335	41	1	121	172	9	36	8	10	3648
% of Totals	2%	61%	17%	0%	9%	1%	0%	3%	5%	0%	1%	0%	0%	100%
% AM	1%	21%	6%	0%	3%	0%	0%	1%	1%	0%	1%	0%	0%	35%
AM Peak Hour	08:00	11:00	09:00		11:00	09:00	06:00	09:00	11:00	08:00				11:00
Volume	10	155	45	1	26	3	1	14	14	1	9	1	2	260
% PM	1%	40%	11%	0%	6%	1%		2%	3%	0%	0%	0%	0%	65%
PM Peak Hour	12:00	17:00	16:00	16:00	16:00	15:00		13:00	17:00	12:00	21:00	20:00	20:00	16:00
Volume	8	210	62	3	39	7		13	17	1	4	1	2	340

Summary	<u>Total</u>				
Trucks & Busses:	Class (#4 thru #13):	750	% Trucks & Busses: 21%	% of Trucks & Busses AM: 20%	% of Trucks & Busses PM: 21%

#1 Motorcycles - 2 Axles
 #2 Passenger Cars - 2 Axles
 #3 Pickup Trucks, Vans, - 2 Axl
 #4 Busses

#5 Single Unit - 2 Axles, 6 Tires
 #6 Single Unit Truck - 3 Axles
 #7 Single Unit - 4 Axles
 #8 Double Unit - <5 Axles

#9 Double Unit - 5 Axles
 #10 Double Unit - >5 Axles
 #11 Multi-Unit 6 Axles
 #12 Multi-Unit <6 Axles

#13 Multi-Unit >6 Axles

Daily Classification Report

Prepared by: Southland Car Counters

Project #: 05-8016-002S

Date: 9/22/2005

Location: US 395 Post Mile 123.7 btwn Ed Powers Rd and Pine Creek Rd

SOUTHBOUND

Time	#1	#2	#3	#4	#5	#6	#7	#8	#9	#10	#11	#12	#13	Total
00:00 AM	0	6	3	1	0	0	0	0	3	1	3	2	2	21
01:00	0	7	1	0	0	0	0	1	4	0	6	1	0	20
02:00	0	3	0	0	0	2	0	0	0	0	6	2	1	14
03:00	0	4	0	0	0	0	0	0	2	0	2	2	0	10
04:00	0	5	1	0	0	1	0	0	1	0	1	0	0	9
05:00	0	11	4	0	1	2	0	1	3	0	0	1	1	24
06:00	4	51	19	0	6	0	0	2	1	0	0	0	0	83
07:00	10	124	20	1	22	0	0	1	7	0	1	0	0	186
08:00	5	139	31	1	27	2	0	10	7	1	0	0	0	223
09:00	2	150	38	0	25	5	0	13	5	1	3	0	1	243
10:00	3	120	28	0	26	6	0	18	9	1	3	0	0	214
11:00	4	176	33	2	35	10	0	17	6	1	0	0	0	284
12:00 PM	7	181	42	1	39	4	0	15	7	1	0	0	0	297
13:00	5	179	33	4	29	12	0	17	11	2	0	0	0	292
14:00	5	138	50	0	36	6	1	9	12	0	0	0	0	257
15:00	8	179	54	3	55	6	1	16	6	0	1	0	1	330
16:00	10	221	61	3	47	4	0	17	7	4	1	0	1	376
17:00	7	223	54	3	41	3	0	8	15	1	3	1	2	361
18:00	13	156	31	0	20	8	2	5	5	7	0	0	2	249
19:00	10	119	25	2	8	3	1	5	4	6	0	0	1	184
20:00	1	57	12	0	8	2	0	0	6	5	2	2	1	96
21:00	1	47	10	0	2	1	0	2	2	6	2	0	1	74
22:00	1	37	1	0	1	0	0	1	2	2	0	0	0	45
23:00	1	19	2	1	1	0	0	1	1	2	2	0	0	30
Totals	97	2352	553	22	429	77	5	159	126	41	36	11	14	3922
% of Totals	2%	60%	14%	1%	11%	2%	0%	4%	3%	1%	1%	0%	0%	100%
% AM	1%	20%	5%	0%	4%	1%		2%	1%	0%	1%	0%	0%	34%
AM Peak Hour	07:00	11:00	09:00	11:00	11:00	11:00		10:00	10:00		01:00			11:00
Volume	10	176	38	2	35	10		18	9	1	6	2	2	284
% PM	2%	40%	10%	0%	7%	1%	0%	2%	2%	1%	0%	0%	0%	66%
PM Peak Hour	18:00	17:00	16:00	13:00	15:00	13:00	18:00	13:00	17:00	18:00	17:00	20:00	17:00	16:00
Volume	13	223	61	4	55	12	2	17	15	7	3	2	2	376

Summary	<u>Total</u>				
Trucks & Busses:	Class (#4 thru #13):	920	% Trucks & Busses: 23%	% of Trucks & Busses AM: 25%	% of Trucks & Busses PM: 23%

#1 Motorcycles - 2 Axles
 #2 Passenger Cars - 2 Axles
 #3 Pickup Trucks, Vans, - 2 Axl
 #4 Busses

#5 Single Unit - 2 Axles, 6 Tires
 #6 Single Unit Truck - 3 Axles
 #7 Single Unit - 4 Axles
 #8 Double Unit - <5 Axles

#9 Double Unit - 5 Axles
 #10 Double Unit - >5 Axles
 #11 Multi-Unit 6 Axles
 #12 Multi-Unit <6 Axles

#13 Multi-Unit >6 Axles

Daily Classification Report

Prepared by: Southland Car Counters

Project #: 05-8016-002S

Date: 9/23/2005

Location: US 395 Post Mile 123.7 btwn Ed Powers Rd and Pine Creek Rd

SOUTHBOUND

Time	#1	#2	#3	#4	#5	#6	#7	#8	#9	#10	#11	#12	#13	Total
00:00 AM	2	8	5	0	1	0	0	0	3	3	3	0	4	29
01:00	0	7	0	0	2	0	0	0	2	1	2	0	5	19
02:00	1	7	0	0	1	1	0	0	0	0	4	0	1	15
03:00	0	6	0	0	0	0	0	0	1	1	0	0	1	9
04:00	0	2	1	0	0	1	0	0	0	0	0	0	0	4
05:00	2	13	8	0	1	1	0	0	0	0	0	1	0	26
06:00	4	38	18	2	3	0	0	0	1	1	1	0	0	68
07:00	6	88	17	1	9	4	0	3	0	3	0	0	1	132
08:00	8	122	42	0	14	3	0	6	4	2	0	0	5	206
09:00	4	164	46	2	25	2	0	13	7	6	0	0	2	271
10:00	5	160	51	4	31	3	0	22	7	2	0	0	0	285
11:00	7	174	52	2	34	10	1	13	7	3	0	0	1	304
12:00 PM	5	213	44	0	29	3	0	16	4	2	1	0	0	317
13:00	11	181	52	3	31	4	1	18	7	5	0	0	1	314
14:00	5	201	47	2	39	7	0	12	2	3	0	0	1	319
15:00	16	229	57	1	34	6	1	21	6	4	0	0	0	375
16:00	7	229	50	0	39	4	0	10	4	4	1	0	2	350
17:00	11	217	49	1	38	2	0	10	1	6	1	0	3	339
18:00	5	90	22	1	12	3	0	1	0	2	0	0	1	137
19:00	5	149	40	0	16	5	1	6	0	0	0	0	0	222
20:00	3	89	10	0	10	3	0	1	0	0	1	0	0	117
21:00	7	104	11	2	12	2	1	5	7	19	0	1	3	174
22:00	2	43	4	0	1	5	0	1	2	0	1	0	0	59
23:00	1	33	7	0	4	0	0	1	3	1	0	1	0	51
Totals	117	2567	633	21	386	69	5	159	68	68	15	3	31	4142
% of Totals	3%	62%	15%	1%	9%	2%	0%	4%	2%	2%	0%	0%	1%	100%
% AM	1%	19%	6%	0%	3%	1%	0%	1%	1%	1%	0%	0%	0%	33%
AM Peak Hour	08:00	11:00	11:00	10:00	11:00	11:00	11:00	10:00	09:00	09:00	02:00	05:00	01:00	11:00
Volume	8	174	52	4	34	10	1	22	7	6	4	1	5	304
% PM	2%	43%	9%	0%	6%	1%	0%	2%	1%	1%	0%	0%	0%	67%
PM Peak Hour	15:00	15:00	15:00	13:00	14:00	14:00	13:00	15:00	13:00	21:00	12:00	21:00	17:00	15:00
Volume	16	229	57	3	39	7	1	21	7	19	1	1	3	375

Summary	<u>Total</u>				
Trucks & Busses:	Class (#4 thru #13):	825	% Trucks & Busses: 20%	% of Trucks & Busses AM: 22%	% of Trucks & Busses PM: 19%

#1 Motorcycles - 2 Axles
 #2 Passenger Cars - 2 Axles
 #3 Pickup Trucks, Vans, - 2 Axl
 #4 Busses

#5 Single Unit - 2 Axles, 6 Tires
 #6 Single Unit Truck - 3 Axles
 #7 Single Unit - 4 Axles
 #8 Double Unit - <5 Axles

#9 Double Unit - 5 Axles
 #10 Double Unit - >5 Axles
 #11 Multi-Unit 6 Axles
 #12 Multi-Unit <6 Axles

#13 Multi-Unit >6 Axles

Daily Classification Report

Prepared by: Southland Car Counters

Project #: 05-8016-002S

Date: 9/24/2005

Location: US 395 Post Mile 123.7 btwn Ed Powers Rd and Pine Creek Rd

SOUTHBOUND

Time	#1	#2	#3	#4	#5	#6	#7	#8	#9	#10	#11	#12	#13	Total
00:00 AM	0	15	1	0	0	0	0	0	1	2	0	0	1	20
01:00	2	8	3	0	1	0		0	2	1	1	1	5	24
02:00	1	5	1	0	0	0	0	1	2	1	1	1	1	14
03:00	1	10	3	0	1	1	0	0	0	1	0	0	1	18
04:00	1	7	0	0	2	0	0	0	1	1	0	1	1	14
05:00	1	22	6	0	2	0	0	1	1	1	0	0	1	35
06:00	1	30	7	0	4	0	0	2	1	0	0	0	0	45
07:00	5	63	18	0	11	4	0	2	0	0	0	0	0	103
08:00	9	117	32	1	7	8	0	11	1	2	0	0	4	192
09:00	6	161	35	2	20	3	0	12	2	2	0	0	0	243
10:00	22	191	55	0	23	2	0	21	3	0	0	0	0	317
11:00	22	200	43	1	19	5	0	13	3	2	2	0	0	310
12:00 PM	18	179	52	1	28	7	0	19	9	4	1	0	0	318
13:00	23	178	47	2	37	3	0	14	2	1	2	0	1	310
14:00	20	183	38	0	28	4	1	10	1	1	0	0	0	286
15:00	19	180	45	1	20	3	0	9	3	1	0	0	0	281
16:00	21	175	31	0	19	4	0	10	4	2	0	0	0	266
17:00	8	164	41	1	16	4	0	5	3	3	0	0	0	245
18:00	10	173	38	0	16	8	0	7	3	1	0	0	1	257
19:00	4	108	22	1	10	4	2	3	2	1	0	0	1	158
20:00	1	51	12	1	10	0	0	4	1	0	0	0	0	80
21:00	3	53	13	0	3	2	0	0	0	0	0	0	0	74
22:00	1	38	4	0	8	1	0	1	0	0	0	0	1	54
23:00	0	23	3	0	0	0	0	1	0	0	0	0	0	27
Totals	199	2334	550	11	285	63	3	146	45	27	7	3	18	3691
% of Totals	5%	63%	15%	0%	8%	2%	0%	4%	1%	1%	0%	0%	0%	100%
% AM	2%	22%	6%	0%	2%	1%		2%	0%	0%	0%	0%	0%	36%
AM Peak Hour	10:00	11:00	10:00	09:00	10:00	08:00		10:00	10:00		11:00	01:00	01:00	10:00
Volume	22	200	55	2	23	8		21	3	2	2	1	5	317
% PM	3%	41%	9%	0%	5%	1%	0%	2%	1%	0%	0%		0%	64%
PM Peak Hour	13:00	14:00	12:00	13:00	13:00	18:00	19:00	12:00	12:00	12:00	13:00		13:00	12:00
Volume	23	183	52	2	37	8	2	19	9	4	2		1	318

Summary	<u>Total</u>													
Trucks & Busses:	Class (#4 thru #13): 608		% Trucks & Busses: 16%			% of Trucks & Busses AM: 17%			% of Trucks & Busses PM: 16%					

#1 Motorcycles - 2 Axles
 #2 Passenger Cars - 2 Axles
 #3 Pickup Trucks, Vans, - 2 Axl
 #4 Busses

#5 Single Unit - 2 Axles, 6 Tires
 #6 Single Unit Truck - 3 Axles
 #7 Single Unit - 4 Axles
 #8 Double Unit - <5 Axles

#9 Double Unit - 5 Axles
 #10 Double Unit - >5 Axles
 #11 Multi-Unit 6 Axles
 #12 Multi-Unit <6 Axles

#13 Multi-Unit >6 Axles

Daily Classification Report

Prepared by: Southland Car Counters

Project #: 05-8016-002S

Date: 9/25/2005

Location: US 395 Post Mile 123.7 btwn Ed Powers Rd and Pine Creek Rd

SOUTHBOUND

Time	#1	#2	#3	#4	#5	#6	#7	#8	#9	#10	#11	#12	#13	Total
00:00 AM	0	11	2	0	1	0	0	1	0	0	0	0	0	15
01:00	0	6	3	0	1	1	0	0	0	0	0	0	0	11
02:00	1	2	2	0	2	0	0	0	0	0	0	0	0	7
03:00	1	8	0	0	1	0	0	0	0	0	0	0	0	10
04:00	1	6	0	0	0	1	0	0	0	0	0	0	0	8
05:00	2	29	6	0	2	0	0	0	0	1	1	0	0	41
06:00	1	29	13	1	6	2	0	0	0	0	0	0	0	52
07:00	10	89	14	0	9	4	0	2	0	0	0	0	0	128
08:00	10	108	36	1	23	5	0	15	0	2	0	0	1	201
09:00	29	185	62	0	21	5	0	18	1	2	0	0	0	323
10:00	41	275	50	3	31	3	0	22	6	2	0	0	4	437
11:00	66	268	71	1	38	6	0	32	10	1	1	0	0	494
12:00 PM	102	288	58	0	33	3	0	37	7	6	1	0	0	535
13:00	58	271	59	1	28	6	0	22	6	4	1	0	1	457
14:00	70	287	60	4	40	2	1	25	2	0	0	0	1	492
15:00	78	233	59	0	17	6	0	14	3	2	0	0	0	412
16:00	48	245	56	1	31	6	1	13	3	2	0	0	1	407
17:00	20	195	47	0	20	4	0	8	5	1	0	0	4	304
18:00	13	151	29	0	11	4	0	9	5	5	0	0	2	229
19:00	5	112	18	0	12	1	0	7	1	2	0	0	0	158
20:00	4	74	15	0	7	4	0	6	0	4	0	0	1	115
21:00	3	45	14	0	5	2	0	4	0	0	0	0	0	73
22:00	1	22	4	0	2	0	0	5	1	1	0	0	0	36
23:00	1	10	1	0	1	0	0	1	0	0	0	0	0	14
Totals	565	2949	679	12	342	65	2	241	50	35	4		15	4959
% of Totals	11%	59%	14%	0%	7%	1%	0%	5%	1%	1%	0%		0%	100%
% AM	3%	20%	5%	0%	3%	1%		2%	0%	0%			0%	35%
AM Peak Hour	11:00	10:00	11:00	10:00	11:00	11:00		11:00	11:00	08:00	05:00		10:00	11:00
Volume	66	275	71	3	38	6		32	10	2	1		4	494
% PM	8%	39%	8%	0%	4%	1%	0%	3%	1%	1%	0%		0%	65%
PM Peak Hour	12:00	12:00	14:00	14:00	14:00	13:00	14:00	12:00	12:00	12:00	12:00		17:00	12:00
Volume	102	288	60	4	40	6	1	37	7	6	1		4	535

Summary	<u>Total</u>				
Trucks & Busses:	Class (#4 thru #13):	766	% Trucks & Busses: 15%	% of Trucks & Busses AM: 17%	% of Trucks & Busses PM: 15%

#1 Motorcycles - 2 Axles
 #2 Passenger Cars - 2 Axles
 #3 Pickup Trucks, Vans, - 2 Axl
 #4 Busses

#5 Single Unit - 2 Axles, 6 Tires
 #6 Single Unit Truck - 3 Axles
 #7 Single Unit - 4 Axles
 #8 Double Unit - <5 Axles

#9 Double Unit - 5 Axles
 #10 Double Unit - >5 Axles
 #11 Multi-Unit 6 Axles
 #12 Multi-Unit <6 Axles

#13 Multi-Unit >6 Axles

Daily Classification Report

Prepared by: Southland Car Counters

Project #: 05-8016-003N

Date: 9/19/2005

Location: US 6 Post Mile 4.5 btwn Silver Canyon Rd and Inyo Canyon Line

NORTHBOUND

Time	#1	#2	#3	#4	#5	#6	#7	#8	#9	#10	#11	#12	#13	Total
00:00 AM	1	1	1	0	1	0	0	1	1	0	1	0	1	8
01:00	0	1	0	0	0	0	0	0	0	1	0	0	0	2
02:00	0	4	0	0	0	0	0	0	2	1	0	0	1	8
03:00	0	2	0	0	0	0	0	1	0	0	0	0	0	3
04:00	0	8	2	0	0	0	0	1	0	0	0	0	0	11
05:00	0	22	14	0	4	1	0	0	2	0	0	0	0	43
06:00	0	35	11	0	8	0	0	2	5	1	0	0	1	63
07:00	0	76	8	0	21	0	0	5	3	0	0	0	0	113
08:00	0	47	10	0	12	0	0	1	1	0	0	0	0	71
09:00	1	39	13	0	7	0	0	1	4	1	0	0	0	66
10:00	1	28	2	0	2	0	0	3	2	1	0	0	0	39
11:00	0	27	8	0	13	0	1	3	4	0	1	0	0	57
12:00 PM	0	29	9	0	6	1	0	2	3	0	0	0	0	50
13:00	1	37	6	1	4	0	0	1	7	0	0	0	1	58
14:00	2	26	9	0	14	2	0	3	8	1	0	0	0	65
15:00	0	17	15	0	6	0	0	0	6	0	0	0	1	45
16:00	2	24	10	0	2	4	0	3	10	2	0	0	0	57
17:00	1	26	2	1	8	0	0	2	6	0	0	0	0	46
18:00	0	23	6	0	7	2	0	2	13	0	1	0	0	54
19:00	0	9	1	0	3	0	0	0	18	1	0	0	0	32
20:00	0	8	2	0	2	0	0	1	13	2	0	0	3	31
21:00	0	11	2	0	2	1	0	0	8	2	1	2	1	30
22:00	0	2	0	0	0	0	0	1	4	1	0	0	0	8
23:00	0	1	0	0	1	0	0	1	2	0	0	0	0	5
Totals	9	503	131	2	123	11	1	34	122	14	4	2	9	965
% of Totals	1%	52%	14%	0%	13%	1%	0%	4%	13%	1%	0%	0%	1%	100%
% AM	0%	30%	7%		7%	0%	0%	2%	2%	1%	0%		0%	50%
AM Peak Hour		07:00	05:00		07:00	05:00	11:00	07:00	06:00	01:00				07:00
Volume	1	76	14		21	1	1	5	5	1	1		1	113
% PM	1%	22%	6%	0%	6%	1%		2%	10%	1%	0%	0%	1%	50%
PM Peak Hour	14:00	13:00	15:00	13:00	14:00	16:00		14:00	19:00	16:00	18:00	21:00	20:00	14:00
Volume	2	37	15	1	14	4		3	18	2	1	2	3	65

Summary	<u>Total</u>				
Trucks & Busses:	Class (#4 thru #13):	322	% Trucks & Busses: 33%	% of Trucks & Busses AM: 25%	% of Trucks & Busses PM: 42%

#1 Motorcycles - 2 Axles
 #2 Passenger Cars - 2 Axles
 #3 Pickup Trucks, Vans, - 2 Axl
 #4 Busses

#5 Single Unit - 2 Axles, 6 Tires
 #6 Single Unit Truck - 3 Axles
 #7 Single Unit - 4 Axles
 #8 Double Unit - <5 Axles

#9 Double Unit - 5 Axles
 #10 Double Unit - >5 Axles
 #11 Multi-Unit 6 Axles
 #12 Multi-Unit <6 Axles

#13 Multi-Unit >6 Axles

Daily Classification Report

Prepared by: Southland Car Counters

Project #: 05-8016-003N

Date: 9/20/2005

Location: US 6 Post Mile 4.5 btwn Silver Canyon Rd and Inyo Canyon Line

NORTHBOUND

Time	#1	#2	#3	#4	#5	#6	#7	#8	#9	#10	#11	#12	#13	Total
00:00 AM	0	3	1	0	0	0	0	1	3	0	1	0	0	9
01:00	0	0	2	0	1	0	0	0	4	1	2	1	0	11
02:00	0	1	0	0	0	0	0	1	2	0	0	0	0	4
03:00	0	2	0	1	0	0	0	0	6	1	0	0	0	10
04:00	0	6	0	0	0	0	0	0	1	0	0	0	0	8
05:00	0	22	8	0	7	0	0	0	3	0	0	0	0	40
06:00	1	38	10	0	11	0	0	1	5	0	0	0	0	66
07:00	1	76	13	0	18	2	0	1	1	0	0	0	1	113
08:00	0	50	14	0	10	1	0	0	3	0	0	0	0	78
09:00	0	35	9	1	9	1	0	0	7	0	0	0	0	62
10:00	1	33	11	1	12	0	0	4	8	2	0	0	0	72
11:00	1	21	11	1	8	0	0	1	4	1	0	0	0	48
12:00 PM	0	14	4	0	7	0	0	3	9	0	0	0	0	37
13:00	0	31	14	0	6	0	0	0	3	2	0	0	0	56
14:00	0	34	12	0	11	1	0	3	6	1	0	0	4	72
15:00	0	22	5	0	9	2	0	2	3	1	0	0	1	45
16:00	3	31	5	0	6	3	1	1	14	2	0	0	4	70
17:00	0	20	5	0	4	1	0	0	11	1	0	0	0	42
18:00	0	13	4	0	5	0	0	0	15	4	0	0	0	41
19:00	0	12	3	0	0	2	0	0	15	5	0	1	3	41
20:00	0	11	0	0	2	0	0	0	10	3	0	1	0	27
21:00	0	9	1	0	0	1	0	1	10	2	0	0	0	24
22:00	0	3	0	0	1	0	0	1	1	0	0	0	2	8
23:00		0	0	0	0	0	0	1	3	1	0	0	1	
Totals	7	487	132	4	127	14	1	21	147	27	3	3	17	984
% of Totals	1%	49%	13%	0%	13%	1%	0%	2%	15%	3%	0%	0%	2%	100%
% AM	0%	29%	8%	0%	8%	0%		1%	5%	1%	0%	0%	0%	53%
AM Peak Hour	06:00	07:00	08:00	03:00	07:00	07:00		10:00	10:00	10:00	01:00	01:00	04:00	07:00
Volume	1	76	14	1	18	2		4	8	2	2	1	1	113
% PM	0%	20%	5%		5%	1%	0%	1%	10%	2%		0%	2%	47%
PM Peak Hour	16:00	14:00	13:00		14:00	16:00	16:00	12:00	18:00	19:00		19:00	14:00	14:00
Volume	3	34	14		11	3	1	3	15	5		1	4	72

Summary	Total				
Trucks & Busses:	Class (#4 thru #13):	364	% Trucks & Busses: 37%	% of Trucks & Busses AM: 29%	% of Trucks & Busses PM: 46%

#1 Motorcycles - 2 Axles
 #2 Passenger Cars - 2 Axles
 #3 Pickup Trucks, Vans, - 2 Axl
 #4 Busses

#5 Single Unit - 2 Axles, 6 Tires
 #6 Single Unit Truck - 3 Axles
 #7 Single Unit - 4 Axles
 #8 Double Unit - <5 Axles

#9 Double Unit - 5 Axles
 #10 Double Unit - >5 Axles
 #11 Multi-Unit 6 Axles
 #12 Multi-Unit <6 Axles

#13 Multi-Unit >6 Axles

Daily Classification Report

Prepared by: Southland Car Counters

Project #: 05-8016-003N

Date: 9/21/2005

Location: US 6 Post Mile 4.5 btwn Silver Canyon Rd and Inyo Canyon Line

NORTHBOUND

Time	#1	#2	#3	#4	#5	#6	#7	#8	#9	#10	#11	#12	#13	Total
00:00 AM	0	3	2	0	0	1	0	0	1	4	0	1	1	13
01:00	0	2	1	0	0	0	0	0	2	2	2	1	0	10
02:00	1	0	0	0	0	0	0	0	5	1	1	0	1	9
03:00	0	2	0	0	1	0	0	0	2	0	0	0	0	5
04:00	0	7	1	0	1	0	0	1	1	0	0	0	0	11
05:00	1	20	8	0	8	0	0	0	1	0	0	0	0	38
06:00	1	40	13	0	10	0	0	0	3	1	0	0	0	68
07:00	0	78	16	0	19	0	0	2	4	0	0	0	0	119
08:00	0	60	8	0	20	0	0	1	5	1	0	0	0	95
09:00	0	31	6	1	6	0	0	0	8	0	0	0	0	52
10:00	0	24	14	0	12	0	0	4	1	1	0	0	0	56
11:00	0	26	13	0	6	0	0	2	12	0	0	0	1	60
12:00 PM	1	25	5	0	8	1	1	2	8	1	0	0	0	52
13:00	0	18	12	0	8	2	0	0	6	0	0	0	1	47
14:00	0	38	10	0	6	4	0	1	11	0	0	0	0	70
15:00	0	20	11	0	4	0	0	3	9	1	0	0	0	48
16:00	2	35	10	0	6	0	0	1	16	0	0	0	3	73
17:00	2	30	4	0	8	1	0	1	20	3	0	0	2	71
18:00	0	15	5	0	7	1	0	0	13	3	0	0	1	45
19:00	3	18	5	1	6	0	0	1	9	8	0	0	2	53
20:00	2	16	3	1	4	0	0	0	5	1	0	0	4	36
21:00	0	5	3	0	2	1	0	0	11	3	0	0	3	28
22:00	0	4	0	0	2	0	0	0	6	2	0	0	1	15
23:00	1	2	0	0	0	1	0	0	4	2	0	0	1	11
Totals	14	519	150	3	144	12	1	19	163	34	3	2	21	1085
% of Totals	1%	48%	14%	0%	13%	1%	0%	2%	15%	3%	0%	0%	2%	100%
% AM	0%	27%	8%	0%	8%	0%		1%	4%	1%	0%	0%	0%	49%
AM Peak Hour	02:00	07:00	07:00	09:00	08:00			10:00	11:00		01:00			07:00
Volume	1	78	16	1	20	1		4	12	4	2	1	1	119
% PM	1%	21%	6%	0%	6%	1%	0%	1%	11%	2%			2%	51%
PM Peak Hour	19:00	14:00	13:00	19:00	12:00	14:00	12:00	15:00	17:00	19:00			20:00	16:00
Volume	3	38	12	1	8	4	1	3	20	8			4	73

Summary	<u>Total</u>													
Trucks & Busses:	Class (#4 thru #13): 402		% Trucks & Busses: 37%			% of Trucks & Busses AM: 29%			% of Trucks & Busses PM: 44%					

#1 Motorcycles - 2 Axles
 #2 Passenger Cars - 2 Axles
 #3 Pickup Trucks, Vans, - 2 Axl
 #4 Busses

#5 Single Unit - 2 Axles, 6 Tires
 #6 Single Unit Truck - 3 Axles
 #7 Single Unit - 4 Axles
 #8 Double Unit - <5 Axles

#9 Double Unit - 5 Axles
 #10 Double Unit - >5 Axles
 #11 Multi-Unit 6 Axles
 #12 Multi-Unit <6 Axles

#13 Multi-Unit >6 Axles

Daily Classification Report

Prepared by: Southland Car Counters

Project #: 05-8016-003N

Date: 9/22/2005

Location: US 6 Post Mile 4.5 btwn Silver Canyon Rd and Inyo Canyon Line

NORTHBOUND

Time	#1	#2	#3	#4	#5	#6	#7	#8	#9	#10	#11	#12	#13	Total
00:00 AM	1	7	0	0	1	2	0	0	8	3	0	0	0	22
01:00	0	1	0	0	0	0	0	0	3	0	2	0	0	6
02:00	0	0	0	0	0	0	0	1	1	1	0	1	0	4
03:00	0	3	0	0	0	0	0	0	1	0	0	0	1	5
04:00	0	6	2	0	0	1	0	0	4	1	1	0	0	15
05:00	0	21	8	0	7	0	0	2	2	0	0	0	0	40
06:00	1	43	9	0	15	1	0	1	5	0	0	0	3	78
07:00	0	78	14	0	14	0	0	2	5	0	0	0	0	113
08:00	0	54	11	1	9	0	0	4	4	0	0	0	2	85
09:00	0	25	10	0	6	1	0	2	7	0	0	0	0	51
10:00	0	31	11	0	13	0	0	2	12	0	1	0	1	71
11:00	0	26	5	0	9	1	0	1	11	3	0	0	0	56
12:00 PM	1	32	6	0	5	0	0	1	3	1	0	0	0	49
13:00	0	19	10	0	9	2	0	2	8	0	0	0	0	50
14:00	1	28	12	0	9	1	0	2	10	2	0	0	0	65
15:00	0	17	14	0	11	3	0	0	15	2	1	0	0	63
16:00	1	30	10	0	5	0	0	0	9	0	1	0	0	56
17:00	0	23	3	0	1	0	0	0	27	0	0	0	0	54
18:00	0	18	3	0	5	0	0	1	12	2	0	1	0	42
19:00	1	14	5	0	2	0	0	2	10	1	0	0	1	36
20:00	0	9	4	0	0	1	0	0	7	2	0	0	0	23
21:00	0	7	1	0	0	1	0	0	13	1	0	0	0	23
22:00	1	8	3	0	0	2	0	2	11	0	0	0	0	27
23:00	0	0	0	0	2	0	0	0	8	0	1	0	0	11
Totals	7	500	141	1	123	16		25	196	19	7	2	8	1045
% of Totals	1%	48%	13%	0%	12%	2%		2%	19%	2%	1%	0%	1%	100%
% AM	0%	28%	7%	0%	7%	1%		1%	6%	1%	0%	0%	1%	52%
AM Peak Hour		07:00	07:00	08:00	06:00			08:00	10:00		01:00	02:00	06:00	07:00
Volume	1	78	14	1	15	2		4	12	3	2	1	3	113
% PM	0%	20%	7%		5%	1%		1%	13%	1%	0%	0%	0%	48%
PM Peak Hour	12:00	12:00	15:00		15:00	15:00		13:00	17:00	14:00	15:00	18:00	19:00	14:00
Volume	1	32	14		11	3		2	27	2	1	1	1	65

Summary	<u>Total</u>					
Trucks & Busses:	Class (#4 thru #13):	397	% Trucks & Busses: 38%	% of Trucks & Busses AM: 33%	% of Trucks & Busses PM: 44%	

#1 Motorcycles - 2 Axles
 #2 Passenger Cars - 2 Axles
 #3 Pickup Trucks, Vans, - 2 Axl
 #4 Busses

#5 Single Unit - 2 Axles, 6 Tires
 #6 Single Unit Truck - 3 Axles
 #7 Single Unit - 4 Axles
 #8 Double Unit - <5 Axles

#9 Double Unit - 5 Axles
 #10 Double Unit - >5 Axles
 #11 Multi-Unit 6 Axles
 #12 Multi-Unit <6 Axles

#13 Multi-Unit >6 Axles

Daily Classification Report

Prepared by: Southland Car Counters

Project #: 05-8016-003N

Date: 9/23/2005

Location: US 6 Post Mile 4.5 btwn Silver Canyon Rd and Inyo Canyon Line

NORTHBOUND

Time	#1	#2	#3	#4	#5	#6	#7	#8	#9	#10	#11	#12	#13	Total
00:00 AM	0	2	0	0	2	0	0	0	3	1	0	1	0	9
01:00	0	1	0	0	0	0	0	0	3	1	5	1	0	11
02:00	0	2	0	0	0	0	0	0	4	0	2	1	0	9
03:00	0	5	0	0	1	0	0	1	5	0	0	1	0	13
04:00	0	6	1	0	2	0	0	1	3	0	0	0	0	13
05:00	0	17	12	0	3	0	0	1	0	1	0	0	0	34
06:00	0	42	8	0	10	0	0	3	3	0	0	0	0	66
07:00	0	60	13	0	13	1	0	1	7	0	0	0	1	96
08:00	0	48	13	0	13	0	0	3	2	1	0	0	0	80
09:00	0	43	10	1	13	2	0	5	4	1	0	0	0	79
10:00	1	38	13	2	8	4	0	0	2	0	0	0	0	68
11:00	0	31	10	0	10	1	0	5	4	1	0	0	1	63
12:00 PM	0	43	11	0	7	2	0	6	5	0	0	0	0	74
13:00	0	28	12	0	9	2	0	3	11	2	0	0	0	67
14:00	1	24	18	1	2	0	0	4	11	0	0	0	0	61
15:00	0	33	9	0	2	3	0	3	6	0	0	0	0	56
16:00	0	30	5	0	3	1	0	3	9	0	0	0	1	52
17:00	1	32	3	0	7	0	0	2	8	1	0	1	1	56
18:00	1	37	6	0	5	0	0	0	10	2	1	0	1	63
19:00	1	19	2	0	2	0	0	2	8	2	0	0	0	36
20:00	1	19	1	0	1	0	0	1	4	3	0	0	0	30
21:00	0	5	2	0	1	0	0	0	9	1	0	1	1	20
22:00	0	7	1	0	1	0	0	0	4	1	0	0	0	14
23:00	1	5	1	0	0	0	0	0	3	1	0	0	0	11
Totals	7	577	151	4	115	16		44	128	19	8	6	6	1081
% of Totals	1%	53%	14%	0%	11%	1%		4%	12%	2%	1%	1%	1%	100%
% AM	0%	27%	7%	0%	7%	1%		2%	4%	1%	1%	0%	0%	50%
AM Peak Hour	10:00	07:00	07:00	10:00	07:00	10:00		09:00	07:00		01:00		07:00	07:00
Volume	1	60	13	2	13	4		5	7	1	5	1	1	96
% PM	1%	26%	7%	0%	4%	1%		2%	8%	1%	0%	0%	0%	50%
PM Peak Hour	14:00	12:00	14:00	14:00	13:00	15:00		12:00	13:00	20:00	18:00	17:00	16:00	12:00
Volume	1	43	18	1	9	3		6	11	3	1	1	1	74

Summary	<u>Total</u>			
Trucks & Busses:	Class (#4 thru #13):	346	% Trucks & Busses: 32%	% of Trucks & Busses AM: 30%
				% of Trucks & Busses PM: 34%

#1 Motorcycles - 2 Axles
 #2 Passenger Cars - 2 Axles
 #3 Pickup Trucks, Vans, - 2 Axl
 #4 Busses

#5 Single Unit - 2 Axles, 6 Tires
 #6 Single Unit Truck - 3 Axles
 #7 Single Unit - 4 Axles
 #8 Double Unit - <5 Axles

#9 Double Unit - 5 Axles
 #10 Double Unit - >5 Axles
 #11 Multi-Unit 6 Axles
 #12 Multi-Unit <6 Axles

#13 Multi-Unit >6 Axles

Daily Classification Report

Prepared by: Southland Car Counters

Project #: 05-8016-003N

Date: 9/24/2005

Location: US 6 Post Mile 4.5 btwn Silver Canyon Rd and Inyo Canyon Line

NORTHBOUND

Time	#1	#2	#3	#4	#5	#6	#7	#8	#9	#10	#11	#12	#13	Total
00:00 AM	0	7	0	0	0	0	0	0	2	0	1	1	0	11
01:00	0	2	3	0	0	0	0	0	6	0	0	1	0	12
02:00	0	5	0	0	1	0	0	0	5	1	0	1	0	13
03:00	0	3	0	0	1	0	0	0	2	0	0	0	0	6
04:00	0	3	2	0	4	0	0	0	0	0	0	0	0	9
05:00	0	8	8	0	2	0	0	0	2	2	2	1	1	26
06:00	1	14	8	0	2	0	0	3	0	0	0	1	0	29
07:00	0	18	5	0	7	0	0	3	1	0	0	0	0	34
08:00	0	32	5	0	3	0	0	1	5	0	0	0	0	46
09:00	0	36	13	1	3	0	0	3	4	2	0	0	0	62
10:00	2	44	4	0	10	0	0	0	5	0	0	0	0	65
11:00	0	35	11	0	6	0	0	1	8	1	0	0	0	62
12:00 PM	1	33	10	0	7	0	0	1	2	1	0	0	0	55
13:00	2	31	4	0	3	0	0	4	3	0	1	0	0	48
14:00	0	33	6	0	6	0	0	2	3	0	0	0	0	50
15:00	1	32	6	0	8	0	0	3	7	0	0	0	0	57
16:00	1	28	6	0	10	0	0	0	10	0	1	1	0	57
17:00	1	22	9	1	10	0	0	2	7	0	0	0	0	52
18:00	1	22	8	0	2	0	0	1	2	1	0	0	0	37
19:00	0	16	2	0	3	0	0	0	3	0	0	0	0	24
20:00	1	13	1	0	2	0	0	0	2	2	0	0	0	21
21:00	0	10	5	0	2	0	0	0	6	0	0	0	0	23
22:00	0	4	1	0	1	0	0	0	1	0	0	0	1	8
23:00	0	3	1	0	0	0	0	0	1	0	1	0	0	6
Totals	11	454	118	2	93			24	87	10	6	6	2	813
% of Totals	1%	56%	15%	0%	11%			3%	11%	1%	1%	1%	0%	100%
% AM	0%	25%	7%	0%	5%			1%	5%	1%	0%	1%	0%	46%
AM Peak Hour	10:00	10:00	09:00	09:00	10:00			06:00	11:00	05:00	05:00		05:00	10:00
Volume	2	44	13	1	10			3	8	2	2	1	1	65
% PM	1%	30%	7%	0%	7%			2%	6%	0%	0%	0%	0%	54%
PM Peak Hour	13:00	12:00	12:00	17:00	16:00			13:00	16:00	20:00	13:00	16:00	22:00	15:00
Volume	2	33	10	1	10			4	10	2	1	1	1	57

Summary	<u>Total</u>				
Trucks & Busses:	Class (#4 thru #13):	230	% Trucks & Busses: 28%	% of Trucks & Busses AM: 28%	% of Trucks & Busses PM: 28%

#1 Motorcycles - 2 Axles
 #2 Passenger Cars - 2 Axles
 #3 Pickup Trucks, Vans, - 2 Axl
 #4 Busses

#5 Single Unit - 2 Axles, 6 Tires
 #6 Single Unit Truck - 3 Axles
 #7 Single Unit - 4 Axles
 #8 Double Unit - <5 Axles

#9 Double Unit - 5 Axles
 #10 Double Unit - >5 Axles
 #11 Multi-Unit 6 Axles
 #12 Multi-Unit <6 Axles

#13 Multi-Unit >6 Axles

Daily Classification Report

Prepared by: Southland Car Counters

Project #: 05-8016-003N

Date: 9/25/2005

Location: US 6 Post Mile 4.5 btwn Silver Canyon Rd and Inyo Canyon Line

NORTHBOUND

Time	#1	#2	#3	#4	#5	#6	#7	#8	#9	#10	#11	#12	#13	Total
00:00 AM	0	1	0	0	1	0	0	0	1	0	0	0	0	3
01:00	0	0	0	0	1	0	0	0	1	0	0	0	0	2
02:00	0	1	0	0	1	0	0	1	3	0	0	0	0	6
03:00	0	5	2	0	0	0	0	0	0	0	0	0	0	7
04:00	0	2	1	0	1	0	0	0	1	0	0	0	0	5
05:00	0	8	2	0	1	0	0	0	0	0	0	0	0	11
06:00	0	11	3	0	0	0	0	1	0	0	0	0	0	15
07:00	0	17	2	0	4	0	0	0	1	0	0	0	1	25
08:00	1	26	4	0	3	0	0	3	5	0	0	0	0	42
09:00	0	42	10	0	11	0	0	1	6	0	0	0	0	70
10:00	1	38	5	0	9	0	0	0	6	0	0	0	0	59
11:00	1	30	8	0	8	0	0	1	8	1	0	0	0	57
12:00 PM	0	29	4	0	8	0	0	0	5	4	0	0	0	50
13:00	0	36	8	0	2	1	0	4	11	1	0	0	0	63
14:00	0	31	8	0	4	1	0	4	9	0	0	0	0	57
15:00	2	32	9	0	8	0	0	1	11	1	0	0	1	65
16:00	2	27	9	0	9	1	0	5	13	1	0	0	0	67
17:00	0	30	9	1	5	2	0	3	11	0	1	0	0	62
18:00	1	24	9	0	1	0	0	1	10	0	0	0	0	46
19:00	1	18	4	0	0	0	0	1	13	2	0	0	1	40
20:00	2	9	2	0	0	0	0	0	6	1	0	0	0	20
21:00	0	7	0	0	1	0	0	1	8	1	0	0	0	18
22:00	0	6	2	0	3	0	0	1	1	1	0	0	0	14
23:00	0	4	2	0	1	0	0	1	3	0	0	0	1	12
Totals	11	434	103	1	82	5		29	133	13	1		4	816
% of Totals	1%	53%	13%	0%	10%	1%		4%	16%	2%	0%		0%	100%
% AM	0%	22%	5%		5%			1%	4%	0%			0%	37%
AM Peak Hour	08:00	09:00	09:00		09:00			08:00	11:00	11:00			07:00	09:00
Volume	1	42	10		11			3	8	1			1	70
% PM	1%	31%	8%	0%	5%	1%		3%	12%	1%	0%		0%	63%
PM Peak Hour	15:00	13:00	15:00	17:00	16:00	17:00		16:00	16:00	12:00	17:00		15:00	16:00
Volume	2	36	9	1	9	2		5	13	4	1		1	67

Summary	<u>Total</u>													
Trucks & Busses:	Class (#4 thru #13): 268		% Trucks & Busses: 33%			% of Trucks & Busses AM: 27%			% of Trucks & Busses PM: 36%					

#1 Motorcycles - 2 Axles
 #2 Passenger Cars - 2 Axles
 #3 Pickup Trucks, Vans, - 2 Axl
 #4 Busses

#5 Single Unit - 2 Axles, 6 Tires
 #6 Single Unit Truck - 3 Axles
 #7 Single Unit - 4 Axles
 #8 Double Unit - <5 Axles

#9 Double Unit - 5 Axles
 #10 Double Unit - >5 Axles
 #11 Multi-Unit 6 Axles
 #12 Multi-Unit <6 Axles

#13 Multi-Unit >6 Axles

Daily Classification Report

Prepared by: Southland Car Counters

Project #: 05-8016-003S

Date: 9/19/2005

Location: US 6 Post Mile 4.5 btwn Silver Canyon Rd and Inyo Canyon Line

SOUTHBOUND

Time	#1	#2	#3	#4	#5	#6	#7	#8	#9	#10	#11	#12	#13	Total
00:00 AM	0	4	0	0	1	0	0	0	4	0	0	0	0	9
01:00	0	0	0	0	0	1	0	0	1	0	0	0	0	2
02:00	1	2	1	0	0	0	0	1	2	0	0	0	0	7
03:00	0	0	0	0	2	0	0	0	2	0	1	0	0	5
04:00	0	2	2	0	0	0	0	0	1	0	0	0	0	5
05:00	0	6	1	0	0	0	0	0	1	0	0	0	0	8
06:00	0	6	3	0	0	1	0	0	1	0	0	0	0	11
07:00	3	17	5	0	0	0	0	1	1	0	0	0	0	27
08:00	2	26	5	0	7	0	0	1	1	0	0	0	0	42
09:00	0	34	9	0	5	0	0	0	3	1	0	0	0	52
10:00	0	18	4	0	6	0	0	2	2	0	0	0	0	32
11:00	0	25	12	0	2	0	0	1	3	0	1	0	0	44
12:00 PM	0	20	11	0	3	2	0	3	3	1	0	0	0	43
13:00	1	26	7	0	6	0	0	3	10	0	0	0	1	54
14:00	0	34	17	0	7	0	0	2	5	0	0	0	0	65
15:00	1	42	9	0	9	0	0	6	7	0	0	0	0	74
16:00	2	56	12	1	11	2	0	0	7	0	0	0	0	91
17:00	5	71	19	0	8	2	0	1	12	0	0	0	0	118
18:00	1	57	11	0	14	0	0	2	17	0	0	0	0	102
19:00	0	17	7	0	5	0	0	0	10	1	0	0	0	40
20:00	1	20	2	0	5	1	0	2	12	0	0	0	0	43
21:00	1	17	3	0	4	1	0	0	9	0	0	0	0	35
22:00	0	8	0	0	0	0	0	0	5	1	0	0	0	14
23:00	0	2	1	0	0	0	0	0	14	0	1	0	0	18
Totals	18	510	141	1	95	10		25	133	4	3		1	941
% of Totals	2%	54%	15%	0%	10%	1%		3%	14%	0%	0%		0%	100%
% AM	1%	15%	4%		2%	0%		1%	2%	0%	0%			26%
AM Peak Hour	07:00	09:00	11:00		08:00	01:00		10:00		09:00	03:00			09:00
Volume	3	34	12		7	1		2	4	1	1			52
% PM	1%	39%	11%	0%	8%	1%		2%	12%	0%	0%		0%	74%
PM Peak Hour	17:00	17:00	17:00	16:00	18:00	12:00		15:00	18:00	12:00	23:00		13:00	17:00
Volume	5	71	19	1	14	2		6	17	1	1		1	118

Summary	<u>Total</u>				
Trucks & Busses:	Class (#4 thru #13):	272	% Trucks & Busses: <u>29%</u>	% of Trucks & Busses AM: <u>23%</u>	% of Trucks & Busses PM: <u>31%</u>

#1 Motorcycles - 2 Axles
 #2 Passenger Cars - 2 Axles
 #3 Pickup Trucks, Vans, - 2 Axl
 #4 Busses

#5 Single Unit - 2 Axles, 6 Tires
 #6 Single Unit Truck - 3 Axles
 #7 Single Unit - 4 Axles
 #8 Double Unit - <5 Axles

#9 Double Unit - 5 Axles
 #10 Double Unit - >5 Axles
 #11 Multi-Unit 6 Axles
 #12 Multi-Unit <6 Axles

#13 Multi-Unit >6 Axles

Daily Classification Report

Prepared by: Southland Car Counters

Project #: 05-8016-003S

Date: 9/20/2005

Location: US 6 Post Mile 4.5 btwn Silver Canyon Rd and Inyo Canyon Line

SOUTHBOUND

Time	#1	#2	#3	#4	#5	#6	#7	#8	#9	#10	#11	#12	#13	Total
00:00 AM	1	2	0	0	1	0	0	1	7	1	0	0	0	13
01:00	0	5	0	0	0	0	0	0	5	0	0	1	0	11
02:00	0	1	0	0	0	1	0	0	5	0	0	0	0	7
03:00	0	0	1	0	2	1	0	1	4	0	1	1	0	11
04:00	0	0	0	0	0	0	0	0	8	0	2	0	0	10
05:00	0	4	1	0	0	1	0	0	9	0	0	0	0	15
06:00	0	5	3	0	4	0	0	0	6	0	0	0	0	18
07:00	0	17	9	1	5	1	0	0	7	0	0	0	0	40
08:00	1	17	5	0	8	0	0	0	8	0	0	0	0	39
09:00	0	16	13	0	4	0	0	2	7	0	0	0	0	42
10:00	0	18	5	1	9	0	0	2	6	0	1	0	0	42
11:00	1	26	4	0	8	0	0	3	9	0	0	0	0	51
12:00 PM	0	40	15	1	8	1	0	1	5	0	0	0	0	71
13:00	0	32	8	0	5	2	0	2	7	0	1	0	0	57
14:00	0	30	7	0	7	0	0	2	7	0	0	0	0	53
15:00	1	36	9	0	11	0	0	0	11	0	0	0	0	68
16:00	0	50	15	0	11	0	0	0	8	0	0	0	0	84
17:00	2	62	12	0	10	1	0	0	11	2	0	0	2	102
18:00	0	45	8	0	10	0	0	1	7	2	0	0	0	73
19:00	0	28	5	0	5	0	0	0	14	0	0	0	0	52
20:00	0	26	6	0	4	0	0	0	8	0	0	0	0	44
21:00	0	17	2	0	1	0	0	1	8	1	1	0	0	31
22:00	0	7	1	1	1	1	0	0	17	0	0	0	0	28
23:00	0	3	1	0	0	0	0	0	6	0	0	0	0	10
Totals	6	487	130	4	114	9		16	190	6	6	2	2	972
% of Totals	1%	50%	13%	0%	12%	1%		2%	20%	1%	1%	0%	0%	100%
% AM	0%	11%	4%	0%	4%	0%		1%	8%	0%	0%	0%		31%
AM Peak Hour		11:00	09:00	07:00	10:00	02:00		11:00	05:00		04:00	01:00		11:00
Volume	1	26	13	1	9	1		3	9	1	2	1		51
% PM	0%	39%	9%	0%	8%	1%		1%	11%	1%	0%		0%	69%
PM Peak Hour	17:00	17:00	12:00	12:00	15:00	13:00		13:00	22:00	17:00	13:00		17:00	17:00
Volume	2	62	15	1	11	2		2	17	2	1		2	102

Summary	<u>Total</u>				
Trucks & Busses:	Class (#4 thru #13):	349	% Trucks & Busses: 36%	% of Trucks & Busses AM: 48%	% of Trucks & Busses PM: 30%

#1 Motorcycles - 2 Axles
 #2 Passenger Cars - 2 Axles
 #3 Pickup Trucks, Vans, - 2 Axl
 #4 Busses

#5 Single Unit - 2 Axles, 6 Tires
 #6 Single Unit Truck - 3 Axles
 #7 Single Unit - 4 Axles
 #8 Double Unit - <5 Axles

#9 Double Unit - 5 Axles
 #10 Double Unit - >5 Axles
 #11 Multi-Unit 6 Axles
 #12 Multi-Unit <6 Axles

#13 Multi-Unit >6 Axles

Daily Classification Report

Prepared by: Southland Car Counters

Project #: 05-8016-003S

Date: 9/21/2005

Location: US 6 Post Mile 4.5 btwn Silver Canyon Rd and Inyo Canyon Line

SOUTHBOUND

Time	#1	#2	#3	#4	#5	#6	#7	#8	#9	#10	#11	#12	#13	Total
00:00 AM	0	5	0	0	1	0	0	0	4	0	0	0	0	10
01:00	0	2	0	0	1	0	0	0	3	0	0	0	0	6
02:00	0	2	1	0	0	0	0	0	7	0	0	0	0	10
03:00	0	1	0	0	1	1	0	0	4	0	1	0	0	8
04:00	0	1	2	0	0	0	0	0	4	0	0	0	0	7
05:00	0	6	1	0	1	0	0	0	5	0	1	0	0	14
06:00	0	3	2	1	2	0	0	1	8	0	1	0	0	18
07:00	2	16	10	0	7	1	0	1	4	0	0	0	0	41
08:00	1	18	10	0	3	0	0	2	4	0	0	0	0	38
09:00	0	17	12	0	7	0	0	1	7	0	1	0	0	45
10:00	1	18	8	1	7	0	0	0	7	0	0	0	0	42
11:00	5	20	13	0	10	0	0	1	8	1	0	0	0	58
12:00 PM	0	32	9	1	9	0	0	1	14	0	0	0	0	66
13:00	1	36	12	0	5	1	0	1	9	0	0	0	0	65
14:00	0	37	8	0	7	0	0	0	7	0	0	0	0	59
15:00	0	41	10	0	8	0	0	0	5	0	0	0	0	64
16:00	1	56	8	0	13	0	0	3	12	0	0	0	0	93
17:00	3	77	21	0	15	0	0	0	21	0	1	0	0	138
18:00	1	36	12	0	11	0	0	2	14	0	0	0	1	77
19:00	0	31	8	0	4	0	0	1	9	0	0	0	0	53
20:00	0	19	5	0	5	1	0	0	5	1	0	0	0	36
21:00	0	29	4	0	3	0	0	0	20	0	0	0	0	56
22:00	0	6	2	0	1	0	0	0	8	0	0	0	0	17
23:00	0	3	1	0	0	0	0	3	6	0	0	0	0	13
Totals	15	512	159	3	121	4		17	195	2	5		1	1034
% of Totals	1%	50%	15%	0%	12%	0%		2%	19%	0%	0%		0%	100%
% AM	1%	11%	6%	0%	4%	0%		1%	6%	0%	0%			29%
AM Peak Hour	11:00	11:00	11:00	06:00	11:00	03:00		08:00	06:00	11:00	03:00			11:00
Volume	5	20	13	1	10	1		2	8	1	1			58
% PM	1%	39%	10%	0%	8%	0%		1%	13%	0%	0%		0%	71%
PM Peak Hour	17:00	17:00	17:00	12:00	17:00	13:00		16:00	17:00	20:00	17:00		18:00	17:00
Volume	3	77	21	1	15	1		3	21	1	1		1	138

Summary	Total				
Trucks & Busses:	Class (#4 thru #13):	348	% Trucks & Busses: 34%	% of Trucks & Busses AM: 40%	% of Trucks & Busses PM: 31%

#1 Motorcycles - 2 Axles
 #2 Passenger Cars - 2 Axles
 #3 Pickup Trucks, Vans, - 2 Axl
 #4 Busses

#5 Single Unit - 2 Axles, 6 Tires
 #6 Single Unit Truck - 3 Axles
 #7 Single Unit - 4 Axles
 #8 Double Unit - <5 Axles

#9 Double Unit - 5 Axles
 #10 Double Unit - >5 Axles
 #11 Multi-Unit 6 Axles
 #12 Multi-Unit <6 Axles

#13 Multi-Unit >6 Axles

Daily Classification Report

Prepared by: Southland Car Counters

Project #: 05-8016-003S

Date: 9/22/2005

Location: US 6 Post Mile 4.5 btwn Silver Canyon Rd and Inyo Canyon Line

SOUTHBOUND

Time	#1	#2	#3	#4	#5	#6	#7	#8	#9	#10	#11	#12	#13	Total
00:00 AM	0	6	0	0	0	0	0	0	1	0	0	0	0	7
01:00	0	1	0	0	0	0	0	0	9	0	0	0	0	10
02:00	0	3	0	0	0	0	0	0	2	0	1	0	0	6
03:00	0	1	0	0	1	0	0	0	1	0	2	2	0	7
04:00	0	0	1	0	0	0	0	0	6	0	0	1	0	8
05:00	0	6	2	1	0	0	0	0	7	0	3	0	0	19
06:00	1	7	2	0	1	0	0	0	7	0	0	0	0	18
07:00	4	13	11	0	8	0	0	1	4	0	0	0	0	41
08:00	0	20	8	0	5	2	1	2	5	0	0	0	0	43
09:00	0	38	3	0	1	1	0	0	9	2	0	0	0	54
10:00	1	16	10	0	4	1	0	4	7	0	0	0	1	44
11:00	0	25	6	0	5	0	0	0	7	1	0	0	0	44
12:00 PM	2	31	7	0	7	0	0	2	4	0	0	0	0	53
13:00	1	31	9	0	11	1	0	2	10	0	0	0	0	65
14:00	0	31	9	0	4	0	0	3	8	0	0	0	0	55
15:00	2	36	13	0	5	1	0	1	9	0	0	0	0	67
16:00	0	48	9	0	11	0	0	1	9	0	0	0	0	78
17:00	2	72	18	0	12	1	0	3	15	0	0	0	0	123
18:00	1	47	8	0	6	2	0	3	10	0	0	0	1	78
19:00	0	46	8	0	6	0	0	0	17	0	1	0	0	78
20:00	2	27	3	0	4	0	0	0	9	0	0	0	1	46
21:00	1	19	3	0	4	0	0	1	8	0	0	0	1	37
22:00	0	11	0	0	1	0	0	0	6	0	0	0	0	18
23:00	0	9	0	0	0	0	0	1	8	0	0	0	0	18
Totals	17	544	130	1	96	9	1	24	178	3	7	3	4	1017
% of Totals	2%	53%	13%	0%	9%	1%	0%	2%	18%	0%	1%	0%	0%	100%
% AM	1%	13%	4%	0%	2%	0%	0%	1%	6%	0%	1%	0%	0%	30%
AM Peak Hour	07:00	09:00	07:00	05:00	07:00	08:00	08:00	10:00	01:00	09:00	05:00	03:00	10:00	09:00
Volume	4	38	11	1	8	2	1	4	9	2	3	2	1	54
% PM	1%	40%	9%	0%	7%	0%	0%	2%	11%	0%	0%	0%	0%	70%
PM Peak Hour	12:00	17:00	17:00	0%	17:00	18:00	0%	14:00	19:00	0%	19:00	0%	18:00	17:00
Volume	2	72	18	0	12	2	0	3	17	0	1	0	1	123

Summary	<u>Total</u>			
Trucks & Busses:	Class (#4 thru #13):	326	% Trucks & Busses: 32%	% of Trucks & Busses AM: 39%
				% of Trucks & Busses PM: 29%

#1 Motorcycles - 2 Axles
 #2 Passenger Cars - 2 Axles
 #3 Pickup Trucks, Vans, - 2 Axl
 #4 Busses

#5 Single Unit - 2 Axles, 6 Tires
 #6 Single Unit Truck - 3 Axles
 #7 Single Unit - 4 Axles
 #8 Double Unit - <5 Axles

#9 Double Unit - 5 Axles
 #10 Double Unit - >5 Axles
 #11 Multi-Unit 6 Axles
 #12 Multi-Unit <6 Axles

#13 Multi-Unit >6 Axles

Daily Classification Report

Prepared by: Southland Car Counters

Project #: 05-8016-003S

Date: 9/23/2005

Location: US 6 Post Mile 4.5 btwn Silver Canyon Rd and Inyo Canyon Line

SOUTHBOUND

Time	#1	#2	#3	#4	#5	#6	#7	#8	#9	#10	#11	#12	#13	Total
00:00 AM	0	9	0	0	1	0	0	0	4	0	0	0	0	14
01:00	1	3	1	0	0	1	0	0	6	0	0	0	0	12
02:00	0	1	0	0	1	0	0	0	4	0	0	0	0	6
03:00	0	2	0	0	0	0	0	0	7	0	1	0	0	10
04:00	0	1	2	0	0	0	0	0	5	0	1	0	0	9
05:00	0	1	2	1	1	0	0	0	1	0	0	0	0	6
06:00	0	4	2	0	1	0	0	0	5	0	1	0	0	13
07:00	0	18	11	0	4	0	0	4	2	0	0	0	0	39
08:00	0	17	5	0	1	1	0	4	5	0	0	0	0	33
09:00	1	20	10	1	3	1	0	5	8	0	0	0	0	49
10:00	0	34	7	1	7	0	0	2	13	3	0	0	0	67
11:00	0	28	7	0	4	0	0	2	5	0	0	0	0	46
12:00 PM	0	31	7	0	8	1	0	2	9	0	0	0	0	58
13:00	1	37	12	0	6	0	0	4	11	0	0	0	0	71
14:00	2	41	7	0	9	0	0	8	10	0	0	0	0	77
15:00	0	34	8	0	11	0	0	3	10	0	1	0	0	67
16:00	1	71	14	0	10	1	0	3	9	0	0	0	0	109
17:00	1	71	6	0	10	1	0	2	5	0	3	0	0	99
18:00	0	46	8	0	7	0	0	1	8	0	0	0	1	71
19:00	1	35	9	0	2	0	0	1	9	0	0	0	0	57
20:00	1	31	3	0	5	0	0	2	7	1	0	0	1	51
21:00	1	22	1	0	4	0	0	0	6	0	0	0	0	34
22:00	0	21	1	0	3	0	0	1	3	0	0	0	0	29
23:00	0	14	0	0	1	0	0	0	5	1	0	0	0	21
Totals	10	592	123	3	99	6		44	157	5	7		2	1048
% of Totals	1%	56%	12%	0%	9%	1%		4%	15%	0%	1%		0%	100%
% AM	0%	13%	4%	0%	2%	0%		2%	6%	0%	0%			29%
AM Peak Hour	01:00	10:00	07:00	05:00	10:00	01:00		09:00	10:00	10:00	03:00			10:00
Volume	1	34	11	1	7	1		5	13	3	1			67
% PM	1%	43%	7%		7%	0%		3%	9%	0%	0%		0%	71%
PM Peak Hour	14:00	16:00	16:00		15:00	12:00		14:00	13:00	20:00	17:00		18:00	16:00
Volume	2	71	14		11	1		8	11	1	3		1	109

Summary	<u>Total</u>					
Trucks & Busses:	Class (#4 thru #13):	323	% Trucks & Busses: 31%	% of Trucks & Busses AM: 38%	% of Trucks & Busses PM: 28%	

#1 Motorcycles - 2 Axles
 #2 Passenger Cars - 2 Axles
 #3 Pickup Trucks, Vans, - 2 Axl
 #4 Busses

#5 Single Unit - 2 Axles, 6 Tires
 #6 Single Unit Truck - 3 Axles
 #7 Single Unit - 4 Axles
 #8 Double Unit - <5 Axles

#9 Double Unit - 5 Axles
 #10 Double Unit - >5 Axles
 #11 Multi-Unit 6 Axles
 #12 Multi-Unit <6 Axles

#13 Multi-Unit >6 Axles

Daily Classification Report

Prepared by: Southland Car Counters

Project #: 05-8016-003S

Date: 9/24/2005

Location: US 6 Post Mile 4.5 btwn Silver Canyon Rd and Inyo Canyon Line

SOUTHBOUND

Time	#1	#2	#3	#4	#5	#6	#7	#8	#9	#10	#11	#12	#13	Total
00:00 AM	0	6	2	0	2	0	0	2	4	0	0	0	0	16
01:00	1	4	1	0	2	0	0	1	3	0	0	0	0	12
02:00	0	7	1	0	2	0	0	0	2	0	0	1	0	13
03:00	0	3	1	0	0	0	0	0	1	0	1	0	0	6
04:00	0	4	0	1	0	0	0	0	5	0	0	0	0	10
05:00	0	4	0	0	0	0	0	0	5	0	0	0	0	9
06:00	1	7	2	0	0	0	0	2	4	0	0	0	0	16
07:00	0	6	1	0	2	1	0	2	4	0	0	0	0	16
08:00	2	20	4	0	6	0	0	0	8	0	0	0	2	42
09:00	1	13	11	0	1	0	0	3	5	0	1	0	0	35
10:00	3	23	6	0	4	0	0	2	10	0	0	0	0	48
11:00	1	41	6	1	6	2	0	1	8	0	0	0	0	66
12:00 PM	0	34	11	0	6	1	0	1	5	1	0	0	0	59
13:00	3	35	7	0	8	0	0	0	4	2	0	0	0	59
14:00	0	45	8	0	10	0	0	3	4	0	0	0	0	70
15:00	1	43	10	0	7	0	0	0	7	0	0	0	0	68
16:00	1	37	9	1	7	1	0	2	1	0	0	0	0	59
17:00	0	41	9	0	5	1	0	2	2	1	0	0	0	61
18:00	0	36	5	0	3	0	0	1	5	0	0	0	0	50
19:00	1	16	3	0	7	0	0	2	1	0	0	0	0	30
20:00	0	27	3	0	6	0	0	0	1	0	1	0	0	38
21:00	0	20	3	0	2	0	0	0	0	0	0	0	0	25
22:00	0	19	0	0	3	0	0	0	1	0	0	0	0	23
23:00	1	6	1	0	1	0	0	0	0	0	0	0	0	9
Totals	16	497	104	3	90	6		24	90	4	3	1	2	840
% of Totals	2%	59%	12%	0%	11%	1%		3%	11%	0%	0%	0%	0%	100%
% AM	1%	16%	4%	0%	3%	0%		2%	7%		0%	0%	0%	34%
AM Peak Hour	10:00	11:00	09:00	04:00	08:00	11:00		09:00	10:00		03:00	02:00	08:00	11:00
Volume	3	41	11	1	6	2		3	10		1	1	2	66
% PM	1%	43%	8%	0%	8%	0%		1%	4%	0%	0%			66%
PM Peak Hour	13:00	14:00	12:00	16:00	14:00	12:00		14:00	15:00	13:00	20:00			14:00
Volume	3	45	11	1	10	1		3	7	2	1			70

Summary	<u>Total</u>				
Trucks & Busses:	Class (#4 thru #13):	223	% Trucks & Busses: 27%	% of Trucks & Busses AM: 37%	% of Trucks & Busses PM: 21%

#1 Motorcycles - 2 Axles
 #2 Passenger Cars - 2 Axles
 #3 Pickup Trucks, Vans, - 2 Axl
 #4 Busses

#5 Single Unit - 2 Axles, 6 Tires
 #6 Single Unit Truck - 3 Axles
 #7 Single Unit - 4 Axles
 #8 Double Unit - <5 Axles

#9 Double Unit - 5 Axles
 #10 Double Unit - >5 Axles
 #11 Multi-Unit 6 Axles
 #12 Multi-Unit <6 Axles

#13 Multi-Unit >6 Axles

Daily Classification Report

Prepared by: Southland Car Counters

Project #: 05-8016-003S

Date: 9/25/2005

Location: US 6 Post Mile 4.5 btwn Silver Canyon Rd and Inyo Canyon Line

SOUTHBOUND

Time	#1	#2	#3	#4	#5	#6	#7	#8	#9	#10	#11	#12	#13	Total
00:00 AM	0	8	2	0	1	0	0	1	1	0	0	0	0	13
01:00	0	1	0	0	0	0	0	0	1	0	0	0	0	2
02:00	0	2	0	0	1	0	0	0	1	0	0	0	0	4
03:00	0	2	0	0	0	0	0	0	1	0	0	0	0	3
04:00	0	1	0	0	0	0	0	0	3	0	0	0	0	4
05:00	0	3	0	0	0	0	0	0	1	0	0	0	0	4
06:00	0	8	0	0	1	0	0	1	1	0	0	0	0	11
07:00	0	7	0	0	0	0	0	0	2	0	0	0	0	9
08:00	0	14	2	0	4	0	0	1	2	0	0	0	0	23
09:00	6	21	5	0	0	0	0	3	2	0	0	0	1	38
10:00	0	18	7	0	5	0	0	2	3	0	0	0	0	35
11:00	2	34	6	0	4	0	0	1	10	0	0	0	0	57
12:00 PM	0	34	8	0	10	0	0	3	3	0	0	0	0	58
13:00	3	42	7	0	5	0	0	2	5	0	0	0	0	64
14:00	1	33	6	0	6	0	0	2	4	0	0	0	0	52
15:00	0	39	7	0	3	1	0	1	4	0	0	0	1	56
16:00	2	42	8	0	4	0	0	6	8	0	0	0	0	70
17:00	1	31	5	0	5	0	0	3	1	0	0	0	0	46
18:00	0	51	5	0	6	0	0	3	4	0	0	0	0	69
19:00	0	36	4	0	3	0	0	3	11	0	0	0	0	57
20:00	0	22	3	0	4	1	0	3	6	0	0	0	0	39
21:00	0	14	7	0	1	0	0	1	7	0	0	0	0	30
22:00	0	12	1	0	0	0	0	1	3	0	0	0	0	17
23:00	0	3	0	0	2	0	0	1	7	0	1	0	0	14
Totals	15	478	83		65	2		38	91		1		2	775
% of Totals	2%	62%	11%		8%	0%		5%	12%		0%		0%	100%
% AM	1%	15%	3%		2%			1%	4%				0%	26%
AM Peak Hour	09:00	11:00	10:00		10:00			09:00	11:00				09:00	11:00
Volume	6	34	7		5			3	10				1	57
% PM	1%	46%	8%		6%	0%		4%	8%		0%		0%	74%
PM Peak Hour	13:00	18:00	12:00		12:00	15:00		16:00	19:00		23:00		15:00	16:00
Volume	3	51	8		10	1		6	11		1		1	70

Summary	<u>Total</u>					
Trucks & Busses:	Class (#4 thru #13):	199	% Trucks & Busses: 26%	% of Trucks & Busses AM: 27%	% of Trucks & Busses PM: 25%	

#1 Motorcycles - 2 Axles
 #2 Passenger Cars - 2 Axles
 #3 Pickup Trucks, Vans, - 2 Axl
 #4 Busses

#5 Single Unit - 2 Axles, 6 Tires
 #6 Single Unit Truck - 3 Axles
 #7 Single Unit - 4 Axles
 #8 Double Unit - <5 Axles

#9 Double Unit - 5 Axles
 #10 Double Unit - >5 Axles
 #11 Multi-Unit 6 Axles
 #12 Multi-Unit <6 Axles

#13 Multi-Unit >6 Axles

3. MOTORCYCLES



2. PASSENGER CARS, *LIGHT VANS,
*LIGHT PICK-UPS INCLUDING
THOSE HAULING RECREATIONAL



AND OTHER TRAILERS. **MINI VANS, TOYOTA PICK-UPS, FORD MINI BRONCOS, VOLKSWAGEN VANS,

3. 2 AXLE 4 TIRE ***FULL SIZE
PICK-UPS, ***FULL SIZE VANS,
LIMOS, MOTOR HOMES INCLUDING
THOSE HAULING RECREATIONAL



AND OTHER TRAILERS. ***FORD F250, FORD ECONOLINE VANS, CHEVY SUBURBANS, CHIEF CHEROKEE,

4. BUSES



5. 2 AXLE, 6 TIRE SINGLE UNIT



6. 3 AXLE SINGLE UNIT



7. 4 AXLE SINGLE UNIT



8. 4 AXLE OR LESS DOUBLE UNIT,
ONE UNIT IS A TRUCK



9. 5 AXLE DOUBLE UNIT,
ONE UNIT IS A TRUCK



10. 6 OR MORE AXLE DOUBLE,
ONE UNIT IS A TRUCK



11. 5 AXLE OR LESS MULTI UNIT



12. 6 AXLE MULTI UNIT



13. 7 OR MORE AXLE MULTI UNIT



APPENDIX C
Standard Transportation Commodity Classification (STCC)

**STANDARD TRANSPORTATION COMMODITY
CLASSIFICATION (STCC)**

7	Farm Products
8	Forest Products
9	Fresh Fish and Other Marine Products
10	Metallic Ores
11	Coal
13	Crude Petroleum, Natural Gas
14	Nonmetallic Minerals, excluding Fuels
19	Ordinance and Accessories
20	Food and Kindred Products
21	Tobacco Products
22	Textile Mill Products
23	Apparel
24	Lumber and Wood
25	Furniture and Fixtures
26	Pulp and Paper
27	Printed Matter
28	Chemicals
29	Petroleum and Coal Products
30	Rubber
31	Leather
32	Stone, Clay, Glass and Concrete
33	Primary Metal Products
34	Fabricated Metal Products
35	Machinery, excluding Electrical
36	Electrical Machinery
37	Transportation Equipment
38	Instruments
39	Miscellaneous Manufacturing
40	Waste and Scrap
43	Mail, Express and Other Contract
44	Freight Forwarder
45	Shipper Association
46	Miscellaneous Mixed Shipments
47	Small Package Shipments
48	Hazardous Waste